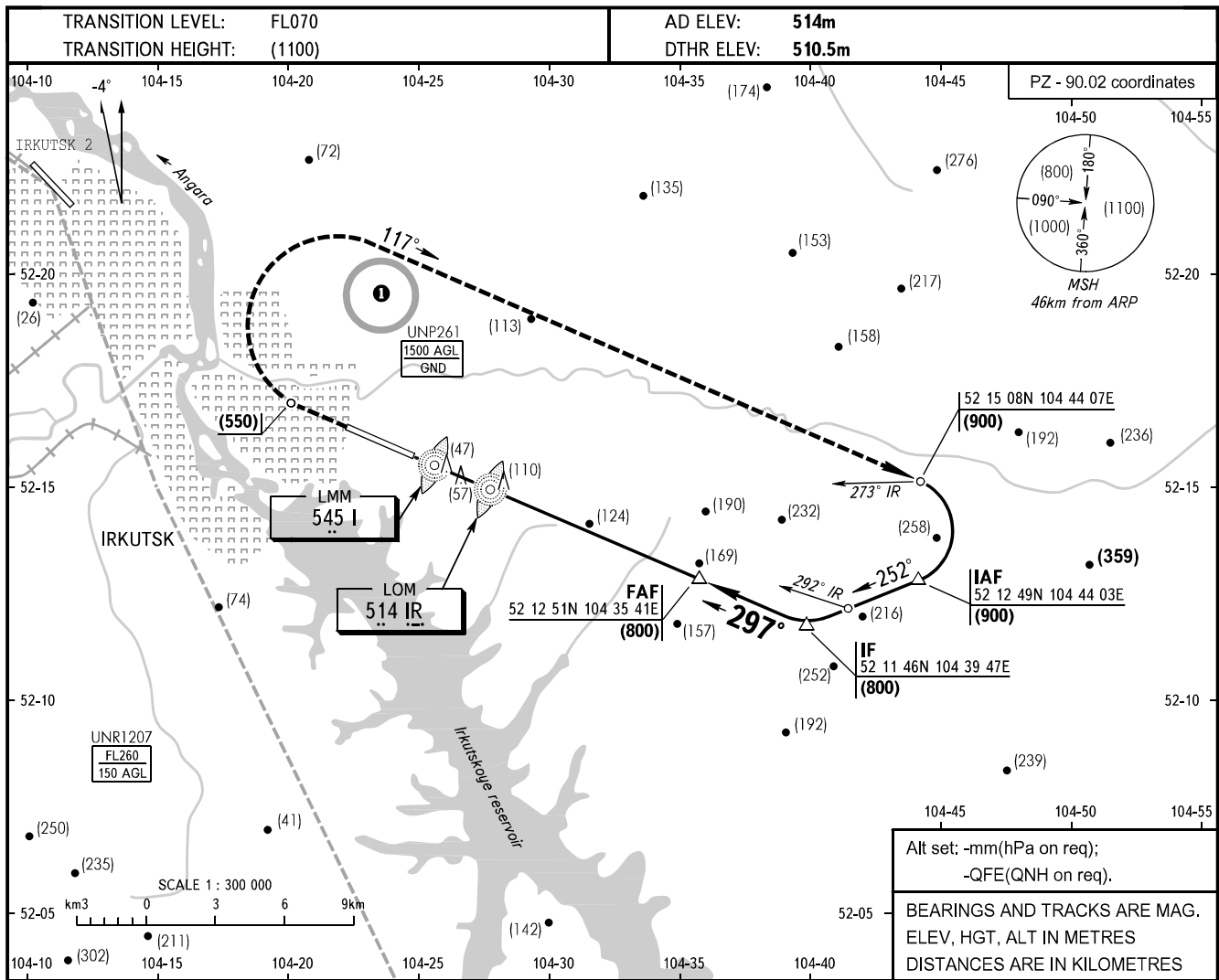


**INSTRUMENT
APPROACH
CHART - ICAO**

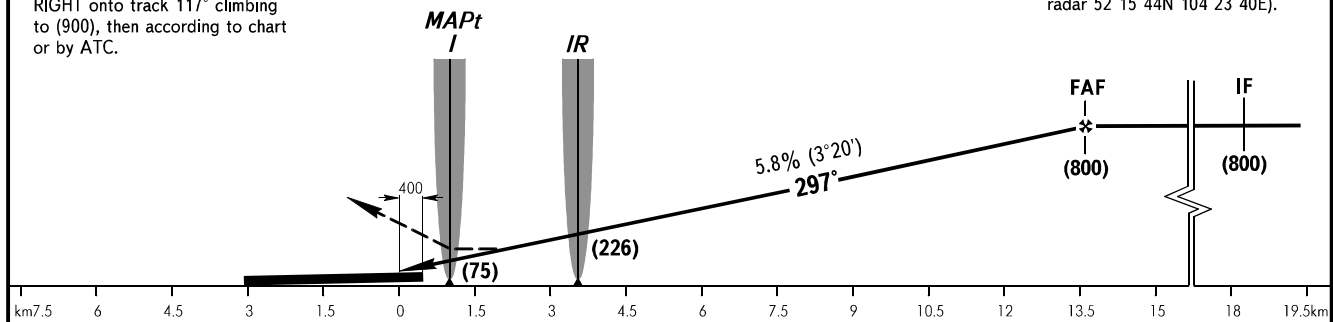
APPROACH	125.200
RADAR	119.300
TOWER	118.100

IRKUTSK, RUSSIA
IRKUTSK
2 NDB, NDB RWY 30



MISSED APPROACH
Climb straight ahead to (550), turn RIGHT onto track 117° climbing to (900), then according to chart or by ATC.

FAF by TAR AZM 117°, DIST 14.7
(Terminal area surveillance radar 52 15 44N 104 23 40E).



		OCA(H)				
		A	B	C	D	
Straight-in	2 NDB	With FAF	645(135)	645(135)	645(135)	645(135)
		WO FAF	1105(595)	1105(595)	1105(595)	1105(595)
Approach	NDB (LOM)	With FAF	645(135)	645(135)	645(135)	645(135)
		WO FAF				
Circling		660(145)	710(200)	770(255)	855(340)	

① ACFT flights to/from IRKUTSK AD are approved.

		CHANGE: OCA(H)										
		km/h	150	180	210	240	270	300	330	360	390	420
GROUND SPEED	km/h	150	180	210	240	270	300	330	360	390	420	450
RATE OF DESCENT	m/s	2.4	2.9	3.4	3.9	4.4	4.9	5.3	5.8	6.3	6.8	7.3