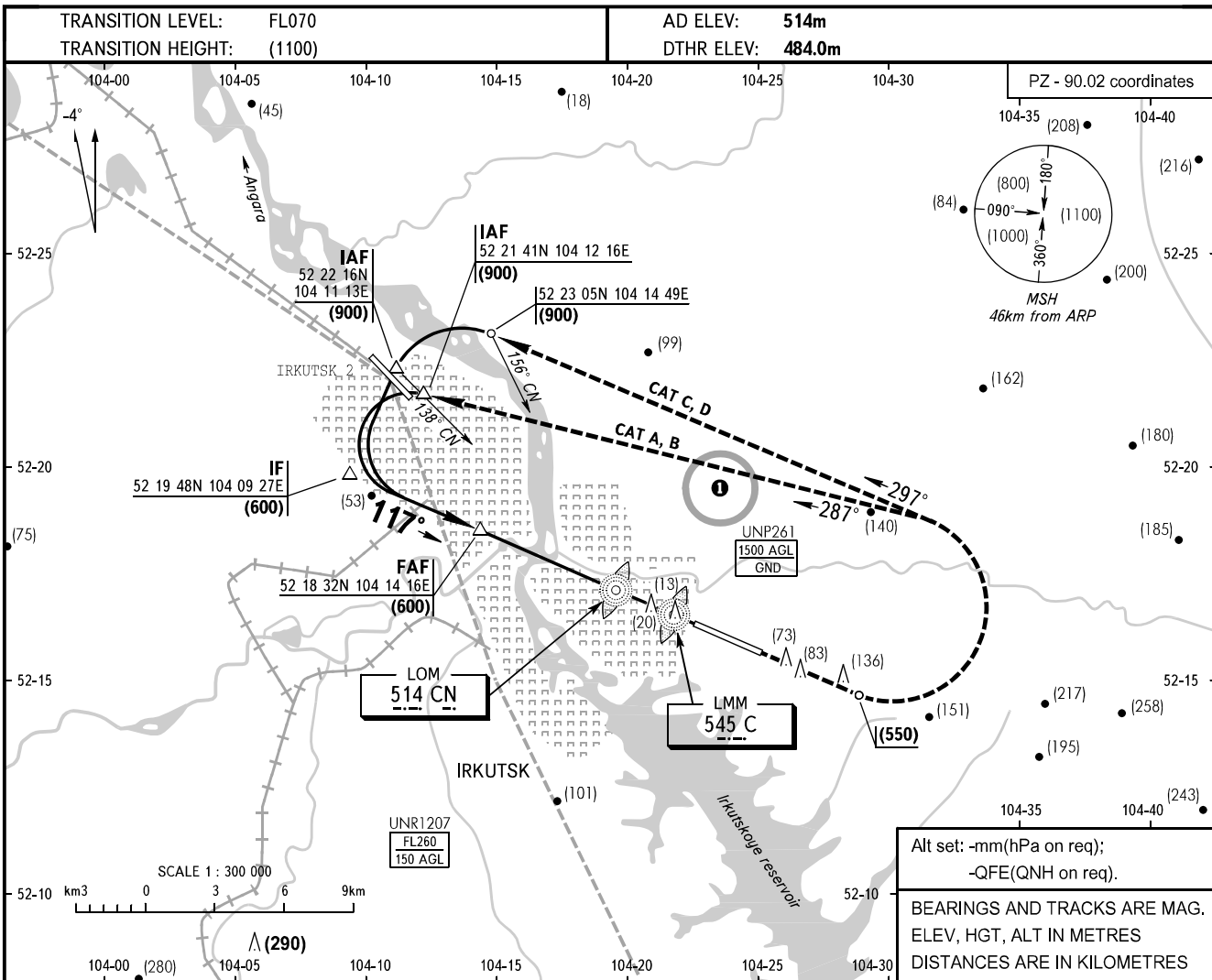


**INSTRUMENT  
APPROACH  
CHART - ICAO**

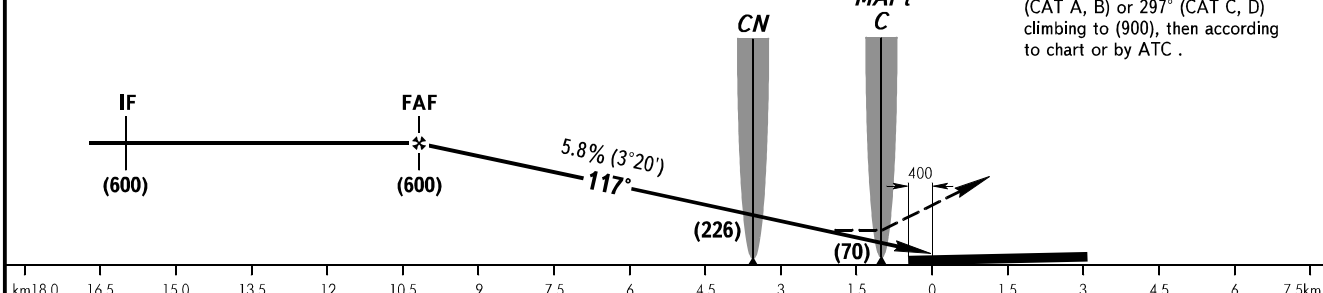
APPROACH	<b>125.200</b>
RADAR	<b>119.300</b>
TOWER	<b>118.100</b>

**IRKUTSK, RUSSIA**  
IRKUTSK  
2 NDB, NDB RWY 12



FAF by TAR AZM 297° MAG, DIST 11.6  
(Terminal area surveillance radar  
52 15 44N 104 23 40E).

**MISSED APPROACH**  
Climb straight ahead to (550),  
turn **LEFT** onto track 287°  
(CAT A, B) or 297° (CAT C, D)  
climbing to (900), then according  
to chart or by ATC .



OCA(H)		A	B	C	D								
Straight-in Approach	2 NDB	With FAF	610(125)	610(125)	610(125)	610(125)							
		WO FAF	740(255)	740(255)	740(255)	740(255)							
	NDB (LOM)	With FAF	620(135)	620(135)	620(135)	620(135)							
Circling		660(145)	710(200)	770(255)	855(340)								
GROUND SPEED		km/h	150	180	210	240	270	300	330	360	390	420	450
RATE OF DESCENT		m/s	2.4	2.9	3.4	3.9	4.4	4.9	5.3	5.8	6.3	6.8	7.3

① ACFT flights to/from IRKUTSK AD are approved.