

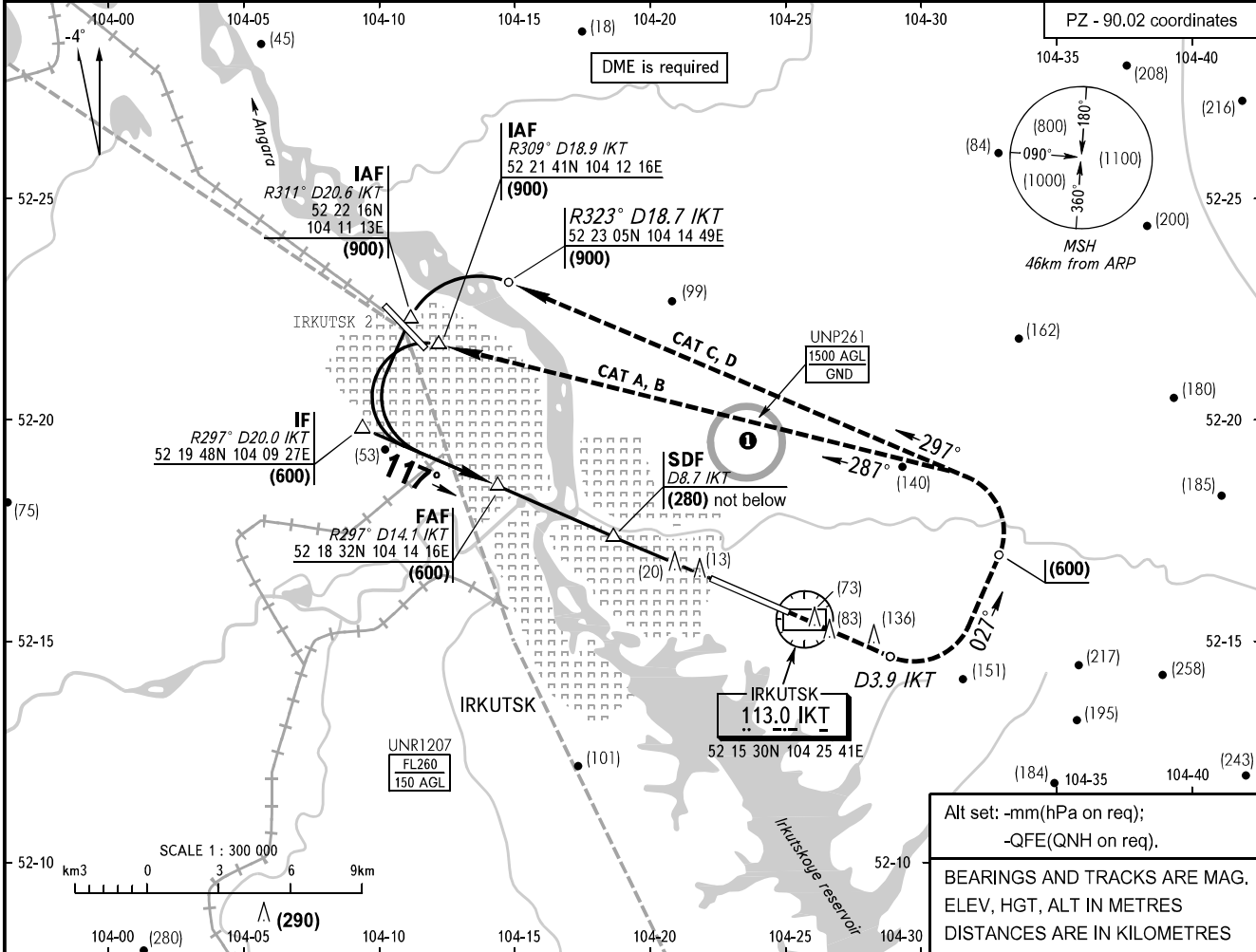
**INSTRUMENT
APPROACH
CHART - ICAO**

**IRKUTSK, RUSSIA
IRKUTSK
VOR RWY 12**

| | |
|----------|---------|
| APPROACH | 125.200 |
| RADAR | 119.300 |
| TOWER | 118.100 |

TRANSITION LEVEL: FL070
TRANSITION HEIGHT: (1100)

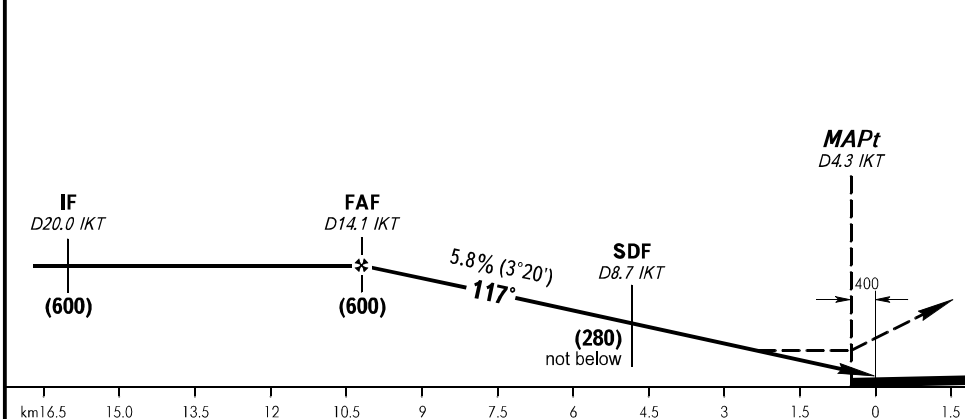
AD ELEV: 514m
DTHR ELEV: 484.0m



Alt set: -mm(hPa on req);
-QFE(QNH on req).

BEARINGS AND TRACKS ARE MAG.
ELEV, HGT, ALT IN METRES
DISTANCES ARE IN KILOMETRES

MISSED APPROACH
Climb straight ahead to D3.9 IKT, turn LEFT onto track 027° climbing to (600), then turn LEFT onto track 287° (CAT A, B) or 297° (CAT C, D) climbing to (900), then according to chart or by ATC.



| OCA(H) | A | | | | B | | | | C | | | | D | | | |
|----------------------|----------|--|-----|-----|----------|-----|-----|-----|----------|-----|-----|-----|----------|--|--|--|
| | A | | | | B | | | | C | | | | D | | | |
| Straight-in Approach | 695(210) | | | | 695(210) | | | | 695(210) | | | | 695(210) | | | |
| Circling | 660(145) | | | | 710(200) | | | | 770(255) | | | | 855(340) | | | |
| GROUND SPEED | km/h | | 150 | 180 | 210 | 240 | 270 | 300 | 330 | 360 | 390 | 420 | 450 | | | |
| RATE OF DESCENT | m/s | | 2.4 | 2.9 | 3.4 | 3.9 | 4.4 | 4.9 | 5.3 | 5.8 | 6.3 | 6.8 | 7.3 | | | |

MAPt is THR RWY 12/D4.3, time reference is not applied.

① ACFT flights to/from Irkutsk AD are approved.

CHANGE: OCA(H)