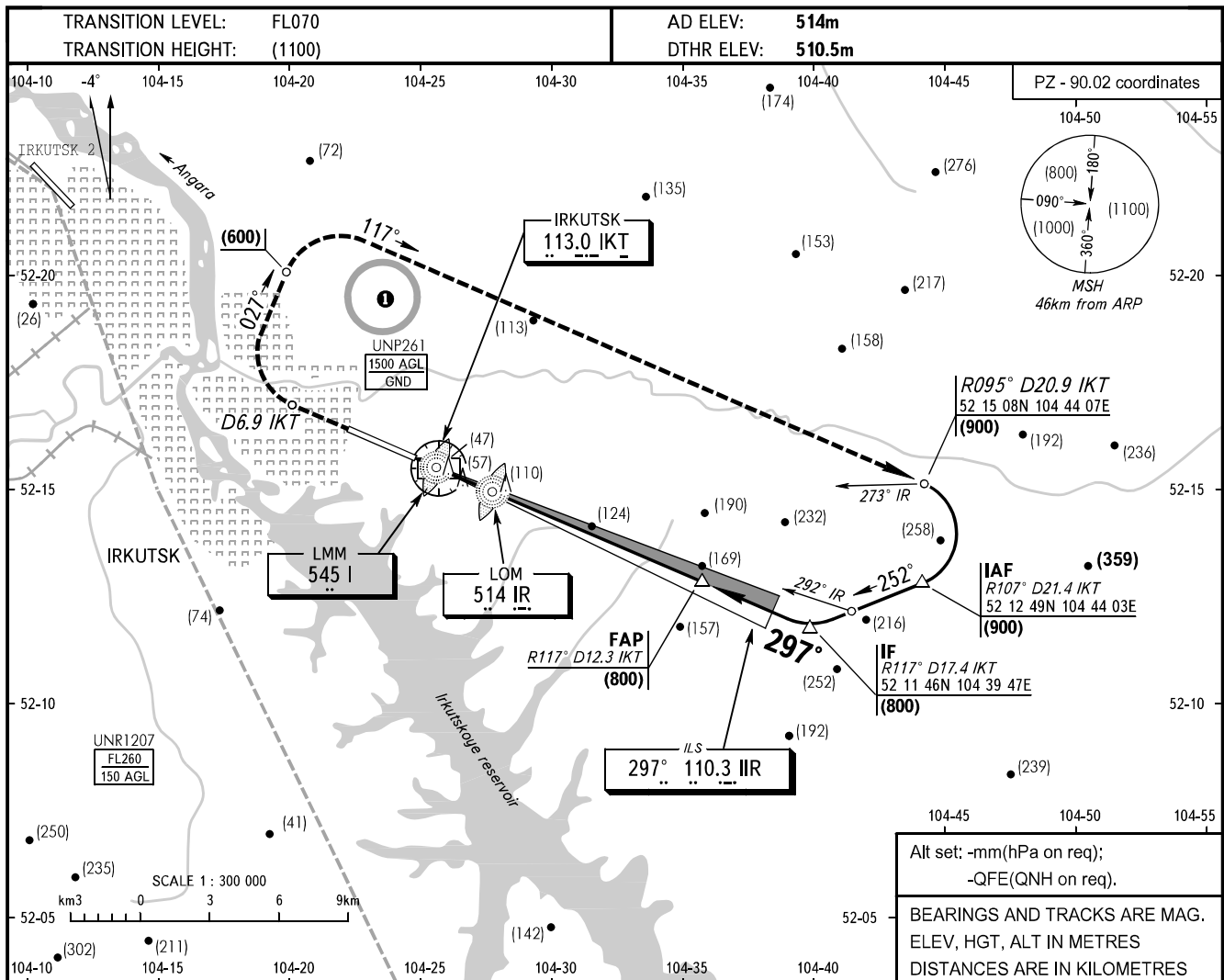


**INSTRUMENT
APPROACH
CHART - ICAO**

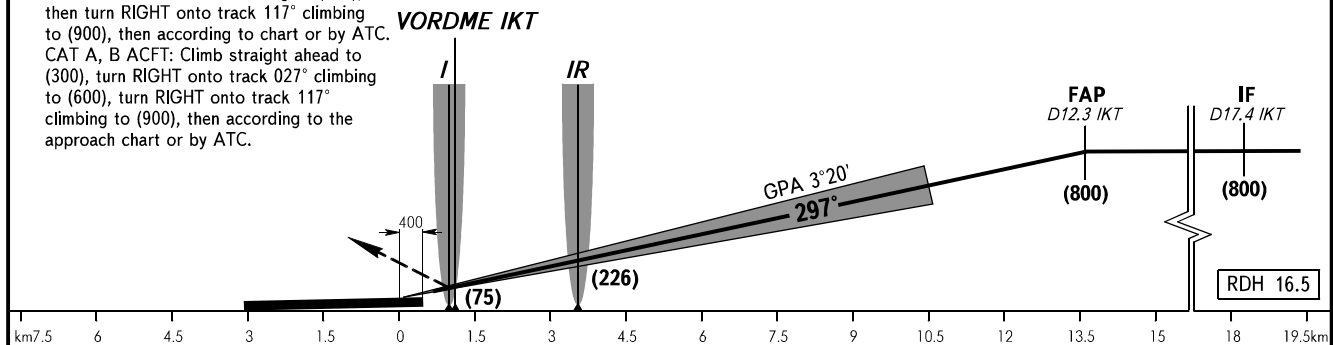
APPROACH	125.200
RADAR	119.300
TOWER	118.100

IRKUTSK, RUSSIA
IRKUTSK
ILS RWY 30 CAT I



MISSED APPROACH

Climb straight ahead to D6.9 IKT, turn RIGHT onto track 027° climbing to (600), then turn RIGHT onto track 117° climbing to (900), then according to chart or by ATC.
CAT A, B ACFT: Climb straight ahead to (300), turn RIGHT onto track 027° climbing to (600), turn RIGHT onto track 117° climbing to (900), then according to the approach chart or by ATC.



OCA(H)		A	B	C	D								
Straight-in	CAT I	563(53)	566(56)	568(58)	571(61)								
	Approach												
Circling		660(145)	710(200)	770(255)	855(340)								
GROUND SPEED		km/h	150	180	210	240	270	300	330	360	390	420	450
RATE OF DESCENT		m/s	2.4	2.9	3.4	3.9	4.4	4.9	5.3	5.8	6.3	6.8	7.3

WARNING
OCA(H) for An-124 ACFT type - 575 (64).
① ACFT flights to/from IRKUTSK AD are approved.