

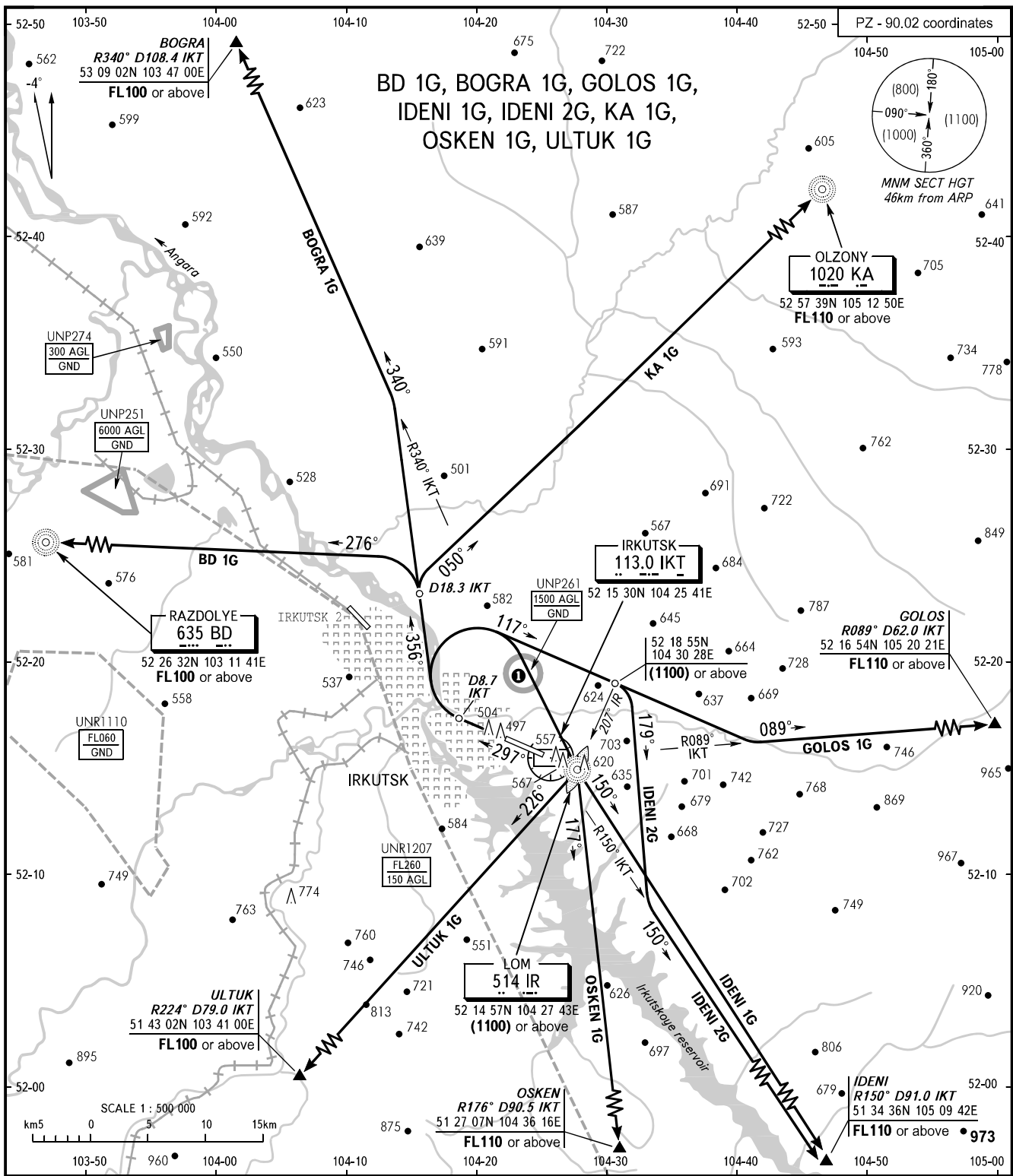
STANDARD DEPARTURE CHART  
INSTRUMENT (SID) - ICAO

TRANSITION  
HEIGHT : (1100)

IRKUTSK, RUSSIA

IRKUTSK

RWY 30



TOWER	118.100
RADAR	119.300
APPROACH	125.200

**WARNING**  
When restricted area UNR1207 is active, take-off from RWY 30 is allowed by coordination of ATS unit.

① ACFT flights to/from IRKUTSK AD are approved.

BEARINGS AND TRACKS ARE MAGNETIC  
ALTITUDES, HEIGHTS AND ELEVATIONS ARE IN METRES  
DISTANCES ARE IN KILOMETRES