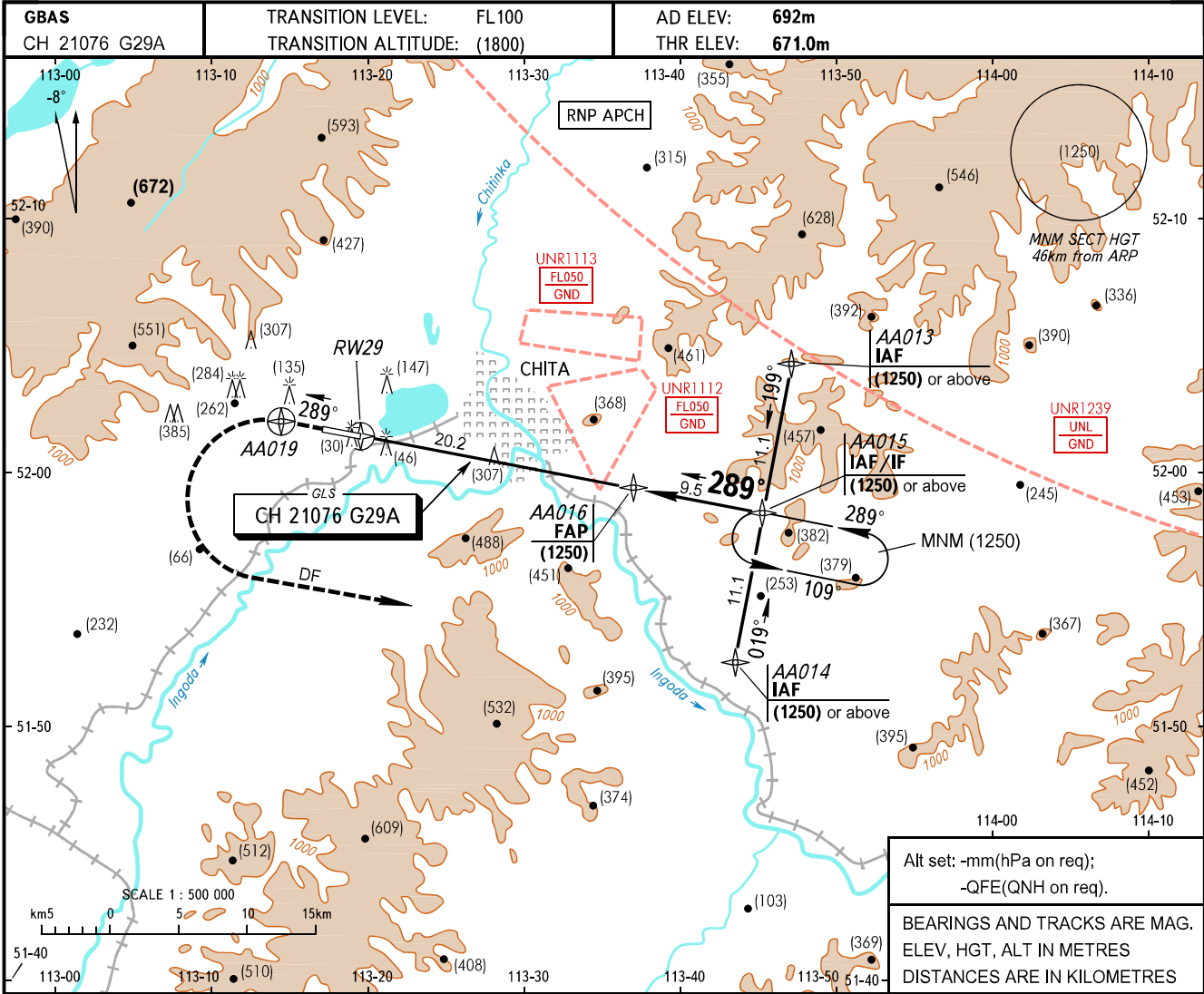


**INSTRUMENT
APPROACH
CHART - ICAO**

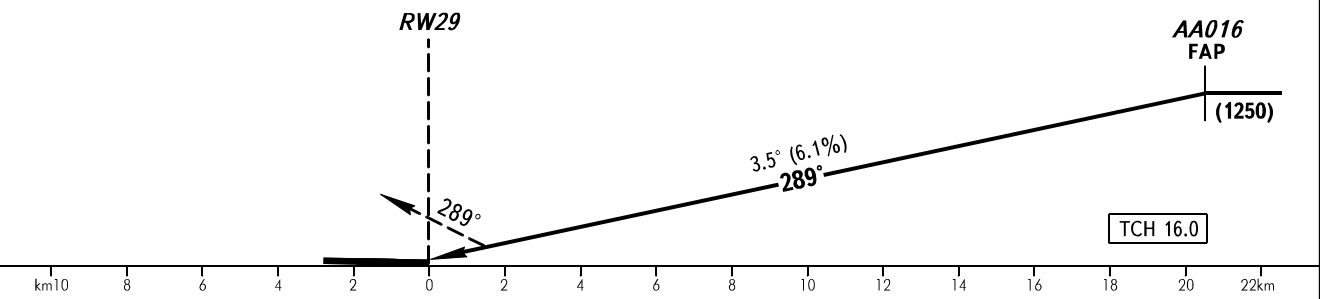
TOWER **118.200**

CHITA, RUSSIA
KADALA
GLS RWY 29 CAT I



Alt set: -mm(hPa on req);
-QFE(QNH on req).
BEARINGS AND TRACKS ARE MAG.
ELEV, HGT, ALT IN METRES
DISTANCES ARE IN KILOMETRES

MISSED APPROACH
Climb on track 289° to AA019,
then turn LEFT to AA014 climbing
to (1250), then according to chart.



OCA(H)		A	B	C	D									
Straight-in Approach	MNM climb GRAD for missed APCH	2.5%	836(165)	840(169)	844(173)	847(176)								
		3.0%	744(73)	747(76)	751(80)	755(84)								
GROUND SPEED		km/h	120	150	180	210	240	270	300	330	360	390	420	450
RATE OF DESCENT		m/s	2.0	2.5	3.1	3.6	4.1	4.6	5.1	5.6	6.1	6.6	7.1	7.6

WARNING:
1. There is CHITA/Chita-1 AD to the RIGHT of approach heading. Landing heading is 151°/331°.
2. Descending on final is allowed only after the controller's confirmation of the glide slope interception (by DIST).