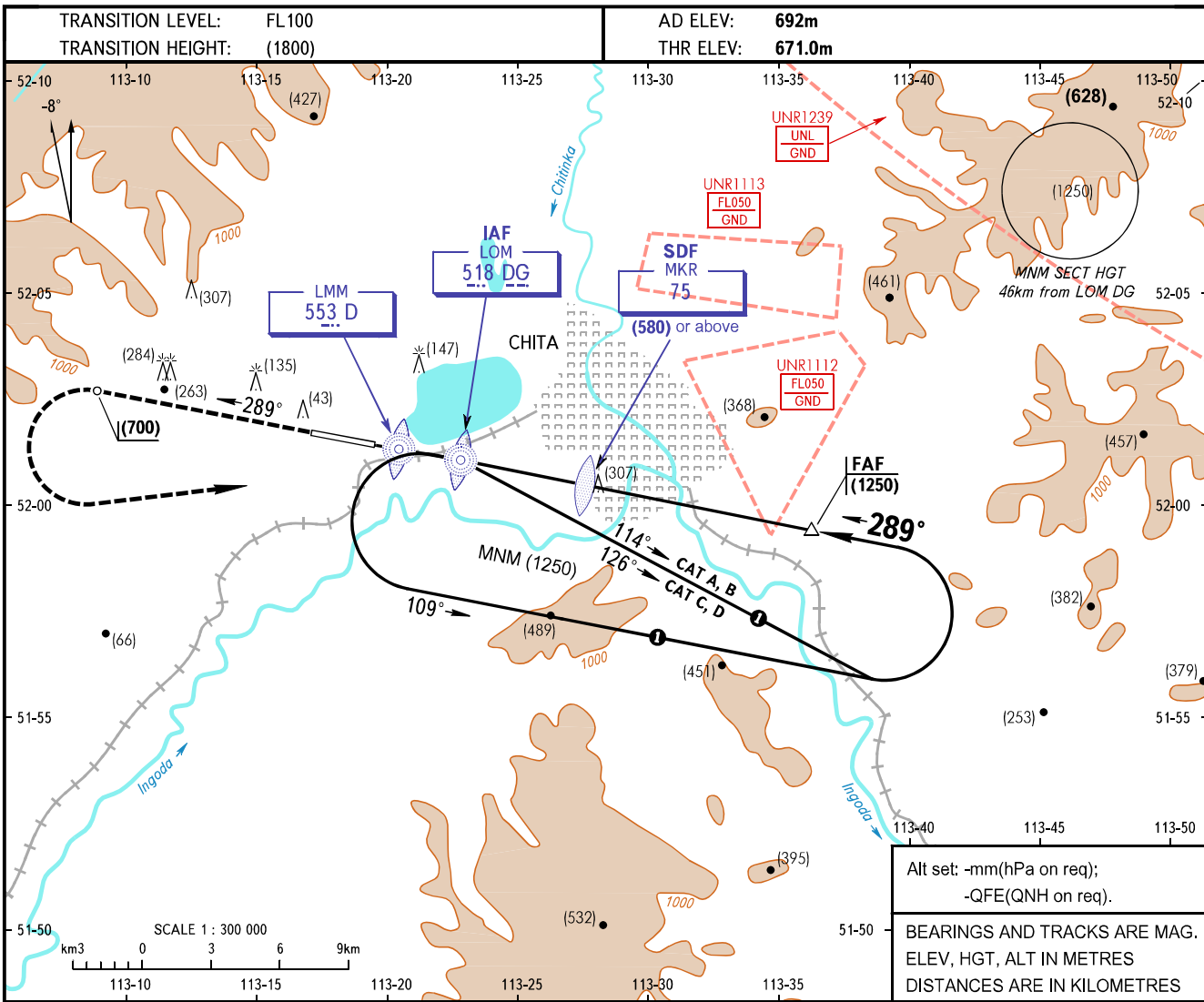


**INSTRUMENT
APPROACH
CHART - ICAO**

TOWER	118.200
-------	---------

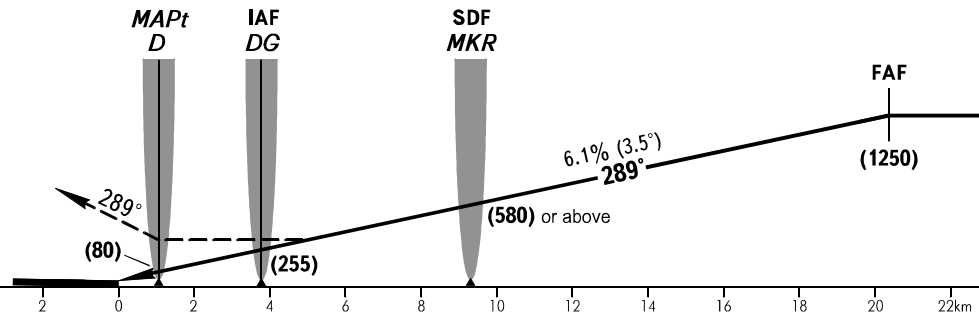
CHITA, RUSSIA
KADALA
2 NDB RWY 29



Alt set: -mm(hPa on req);
-QFE(QNH on req).
BEARINGS AND TRACKS ARE MAG.
ELEV, HGT, ALT IN METRES
DISTANCES ARE IN KILOMETRES

MISSED APPROACH
Climb on track 289° to (700), then turn
LEFT to LOM DG climbing to (1250),
then according to chart.

FAF is fixed by TAR D21.6



OCA(H)		A	B	C	D
Straight-in Approach	With SDF	980(310)	980(310)	980(310)	980(310)
	WO SDF	1250(580)	1250(580)	1250(580)	1250(580)

WARNING:
1. There is CHITA/Chita-1 AD to the RIGHT of approach heading. Landing heading is 151°/331°.
2. Descending below (580) before passing MKR - is PROHIBITED.

① CAT A 7min CAT C 4min
CAT B 5min 30sec CAT D 3min 30sec

GROUND SPEED	km/h	120	150	180	210	240	270	300	330	360	390	420	450
RATE OF DESCENT	m/s	2.0	2.5	3.1	3.6	4.1	4.6	5.1	5.6	6.1	6.6	7.1	7.6