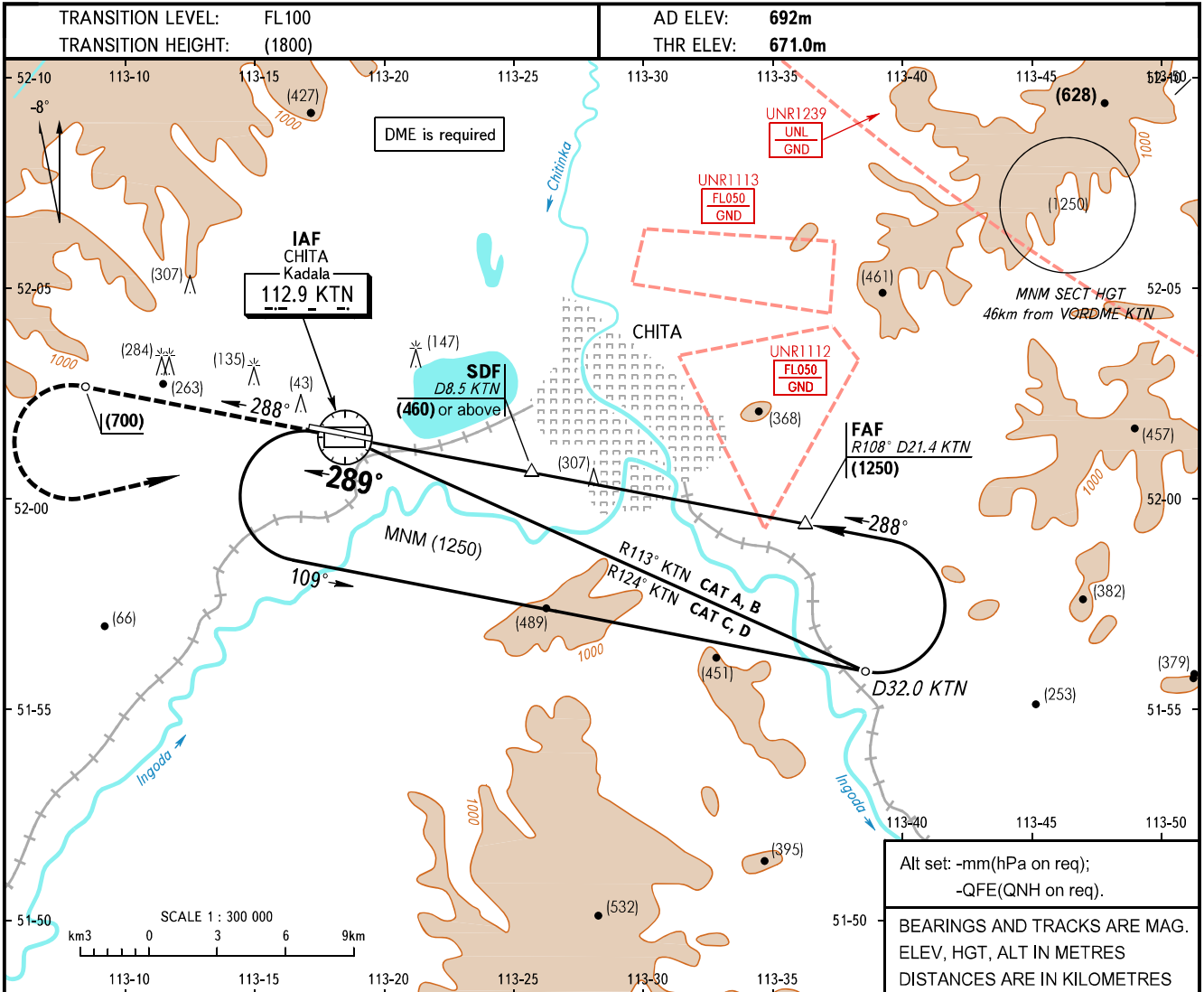


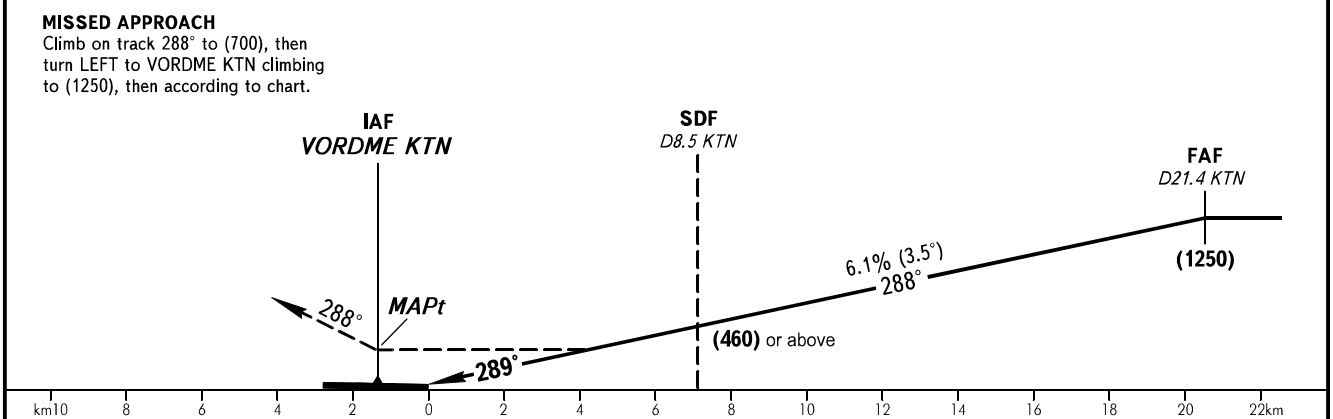
**INSTRUMENT  
APPROACH  
CHART - ICAO**

TOWER **118.200**

**CHITA, RUSSIA**  
KADALA  
VOR RWY 29



Alt set: -mm(hPa on req);  
-QFE(QNH on req).  
BEARINGS AND TRACKS ARE MAG.  
ELEV, HGT, ALT IN METRES  
DISTANCES ARE IN KILOMETRES



OCA(H)		A	B	C	D									
Straight-in Approach	MNM climb GRAD for missed APCH	2.5%	930(260)	930(260)	930(260)	930(260)								
		3.0%	880(210)	880(210)	880(210)	880(210)								
GROUND SPEED		km/h	120	150	180	210	240	270	300	330	360	390	420	450
RATE OF DESCENT		m/s	2.0	2.5	3.1	3.6	4.1	4.6	5.1	5.6	6.1	6.6	7.1	7.6

**WARNING:**

- There is CHITA/Chita-1 AD to the RIGHT of approach heading. Landing heading is 151°/331°.
- Descending below (460) before passing SDF (D8.5 KTN) - is PROHIBITED.
- Final approach track is offset by 1° from the RWY centre line.

CHANGE: MKR withdraw