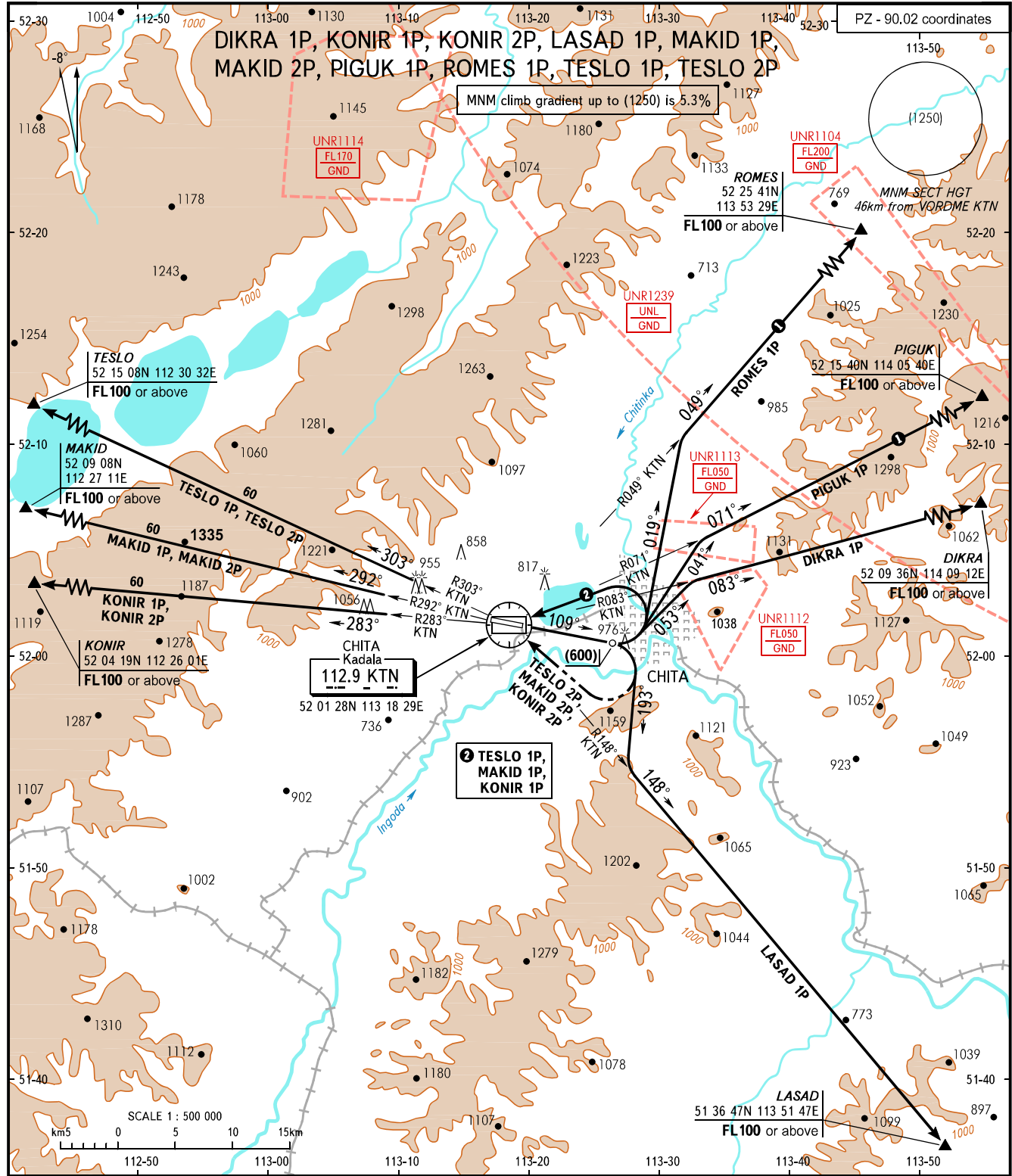


STANDARD DEPARTURE CHART  
INSTRUMENT (SID) - ICAO

TRANSITION  
HEIGHT : (1800)

CHITA, RUSSIA  
KADALA  
RWY 11



TOWER 118.200  
APPROACH 122.000

① Only for Russian users of airspace.

BEARINGS AND TRACKS ARE MAGNETIC  
ALTITUDES, HEIGHTS AND ELEVATIONS ARE IN METRES  
DISTANCES ARE IN KILOMETRES