

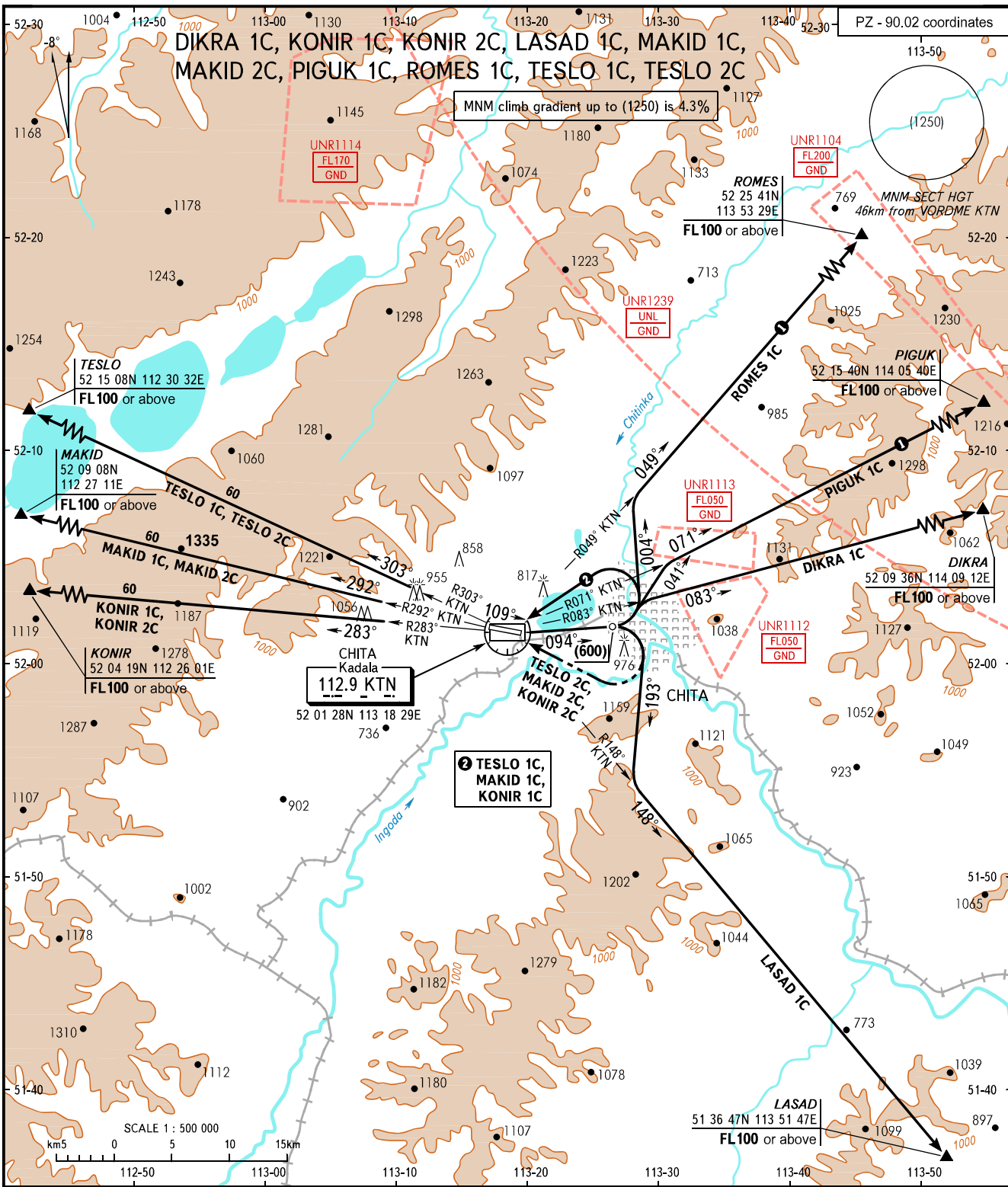
STANDARD DEPARTURE CHART
INSTRUMENT (SID) - ICAO

TRANSITION
HEIGHT : (1800)

CHITA, RUSSIA

KADALA

RWY 11



TOWER 118.200
APPROACH 122.000

① Only for Russian users of airspace.

BEARINGS AND TRACKS ARE MAGNETIC
ALTITUDES, HEIGHTS AND ELEVATIONS ARE IN METRES
DISTANCES ARE IN KILOMETRES

CHANGE: COORD. COM