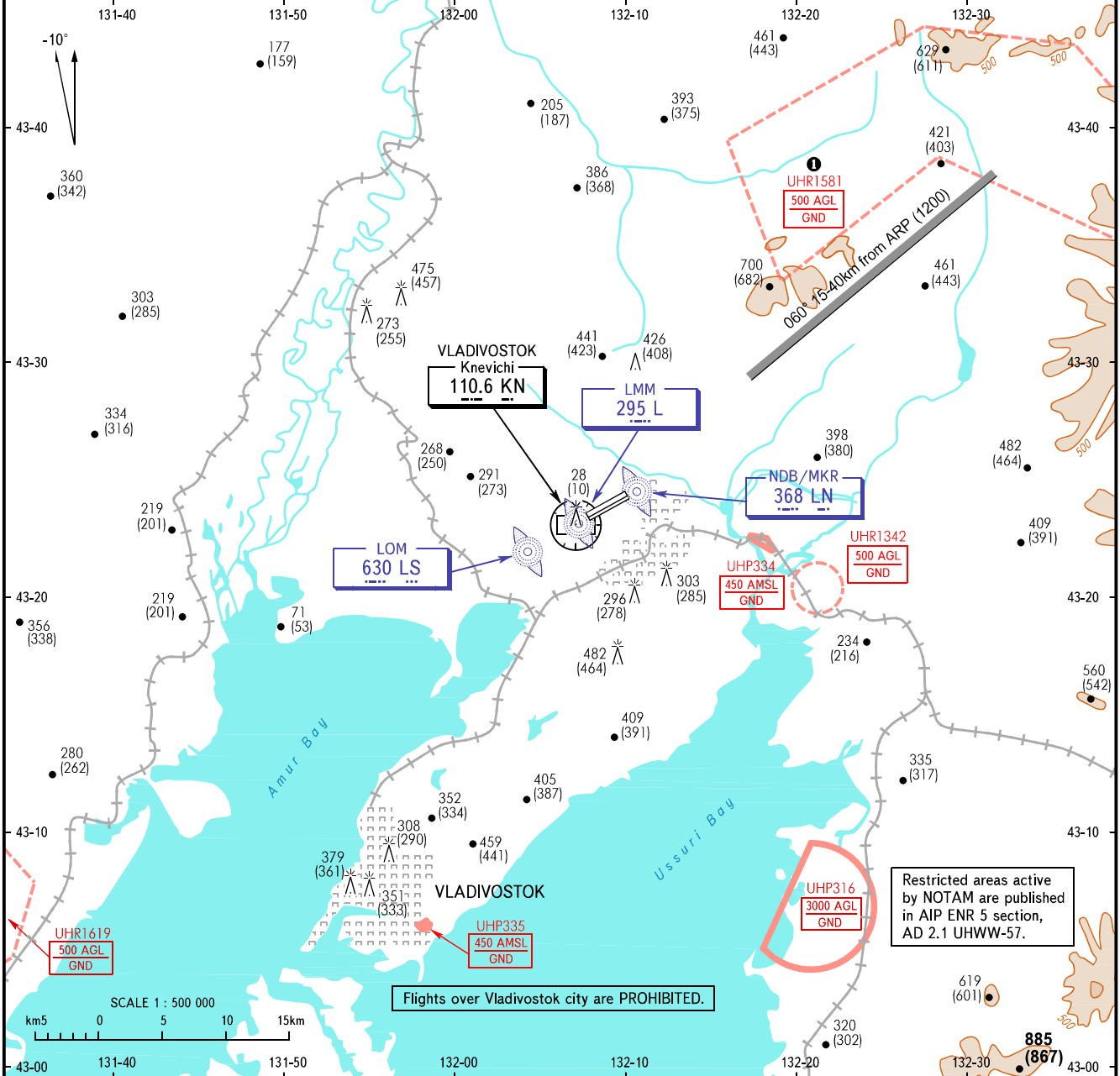


**VISUAL
APPROACH
CHART - ICAO**

RADAR	123.400
TOWER	119.500

VLADIVOSTOK, RUSSIA
KNEVICHY
RWY 07R/25L

TRANSITION LEVEL: FL080	AD ELEV: 18m
TRANSITION HEIGHT: (1800)	



Restricted areas active by NOTAM are published in AIP ENR 5 section, AD 2.1 UHWW-57.

Flights over Vladivostok city are PROHIBITED.

WARNING:

- Visual approach conditions:
 - visual approach shall be carried out by the permission of the ATS unit after the report of the flight crew about establishing visual contact with RWY and/or its references;
 - the flight crew shall inform that meteorological conditions allow to carry out visual approach and landing;
 - ceiling is not less than 1500m.
- Visual control of approach slope indication by PAPI (PAPI-3°00') is AVBL.
- If visual contact with RWY and/or its references is lost, the flight crew shall carry out IFR missed approach procedure and immediately inform the ATS unit about it.

① The restriction is not applicable to flights carried out according to SID and approach charts of VLADIVOSTOK/Knevichi AD.

BEARINGS AND TRACKS ARE MAGNETIC
ALTITUDES, HEIGHTS AND ELEVATIONS ARE IN METRES
DISTANCES ARE IN KILOMETRES

CHANGE: COM, UHR1342