

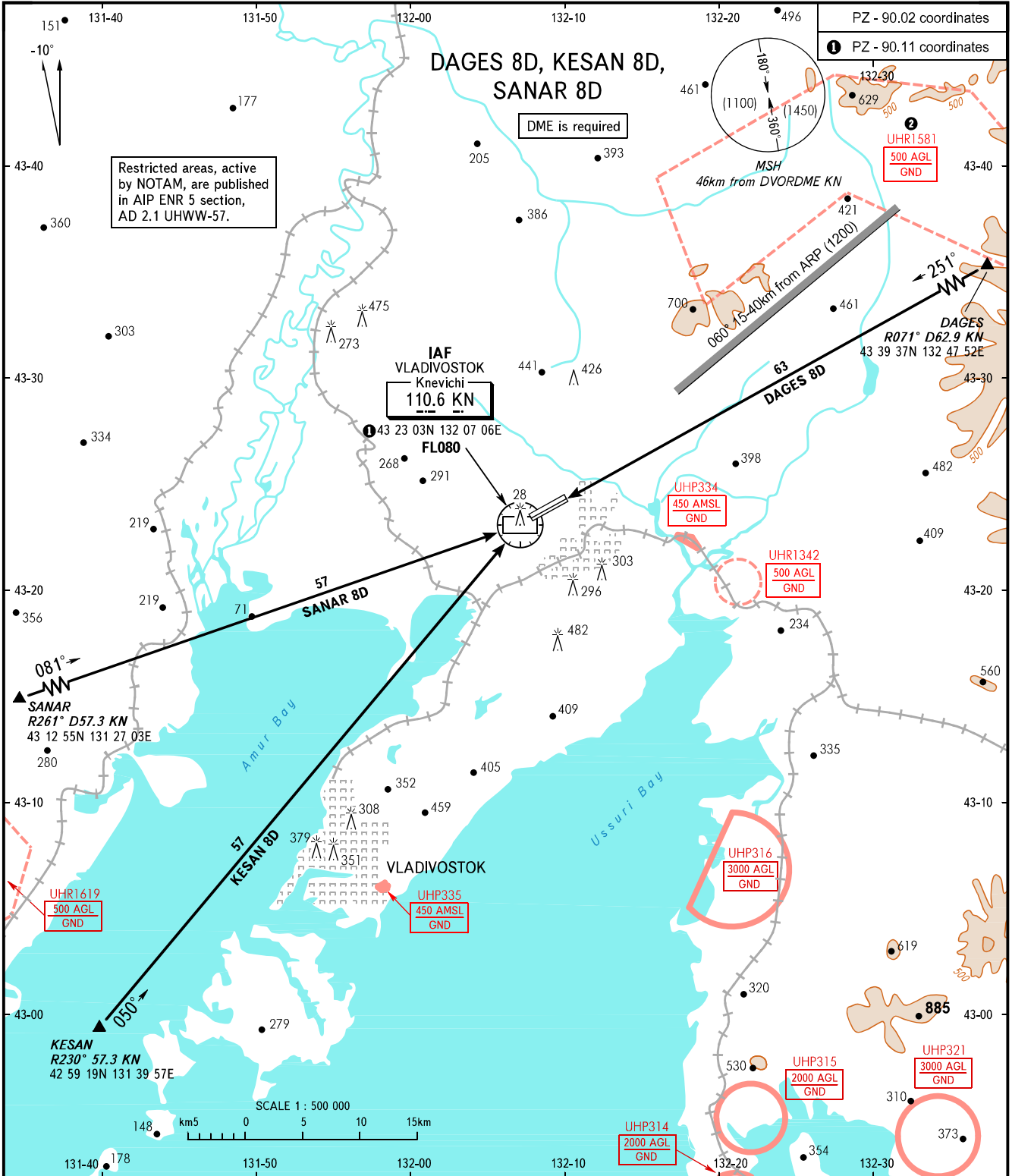
STANDARD ARRIVAL CHART  
INSTRUMENT (STAR) - ICAO

TRANSITION  
LEVEL : **FL080**

VLADIVOSTOK, RUSSIA

KNEVICH I

RWY 07R/25L



RADAR **123.400**  
TOWER **119.500**

**WARNING**  
 FL for passing the exit points on ATS routes shall be assigned by ATC.  
 ② The restriction is not applicable to flights carried out according to SID and approach charts of VLADIVOSTOK/Knevichi AD.

BEARINGS AND TRACKS ARE MAGNETIC  
 ALTITUDES, HEIGHTS AND ELEVATIONS ARE IN METRES  
 DISTANCES ARE IN KILOMETRES

CHANGE: UHP321