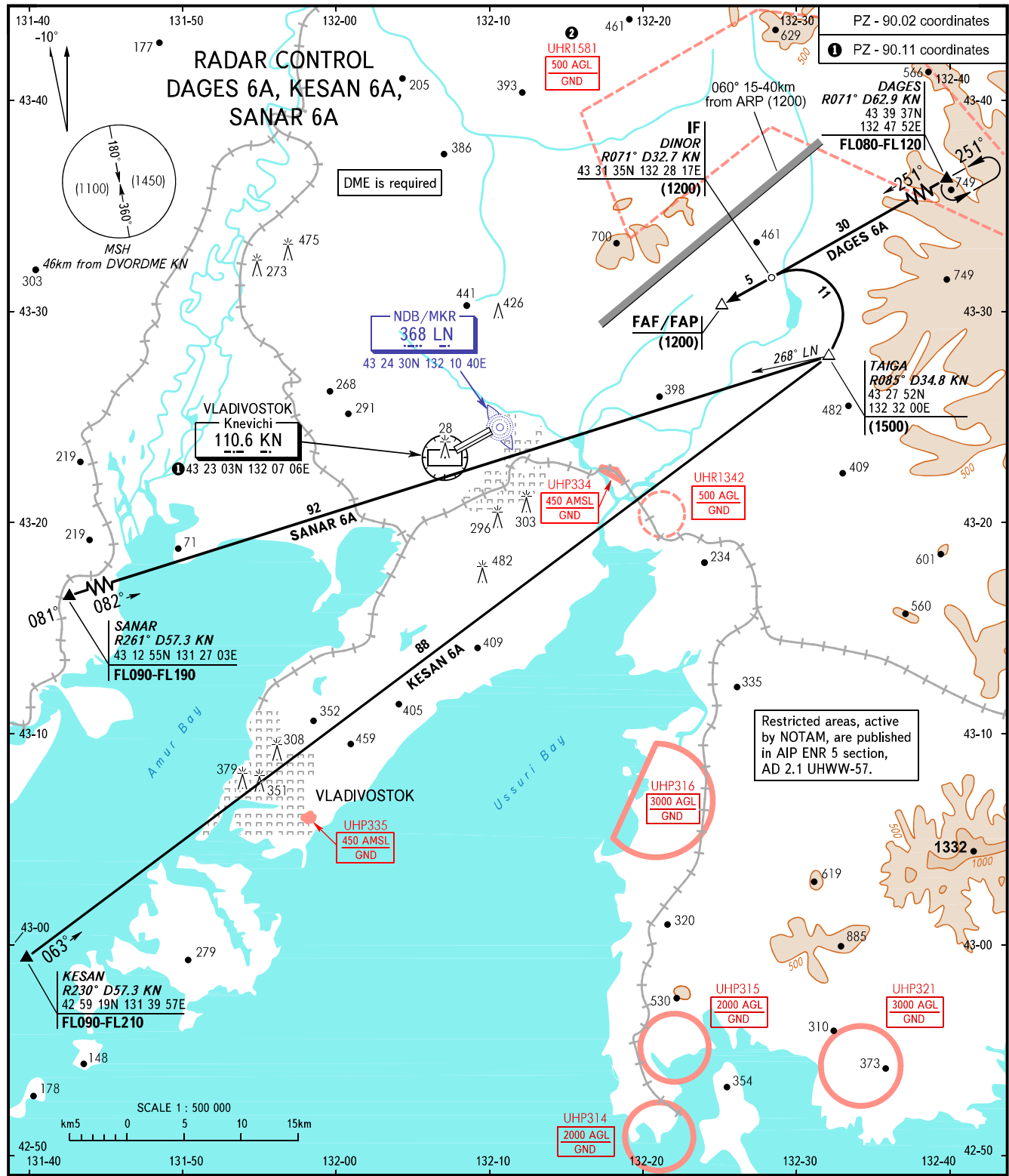


STANDARD ARRIVAL CHART
INSTRUMENT (STAR) - ICAO

TRANSITION
LEVEL: **FL080**

VLADIVOSTOK, RUSSIA
KNEVICH
RWY 25L



RADAR **123.400**
TOWER **119.500**

② The restriction is not applicable to flights carried out according to SID and approach charts of VLADIVOSTOK /Knevichi AD.

BEARINGS AND TRACKS ARE MAGNETIC
ALTITUDES, HEIGHTS AND ELEVATIONS ARE IN METRES
DISTANCES ARE IN KILOMETRES

CHANGE: HLDG; UHP321