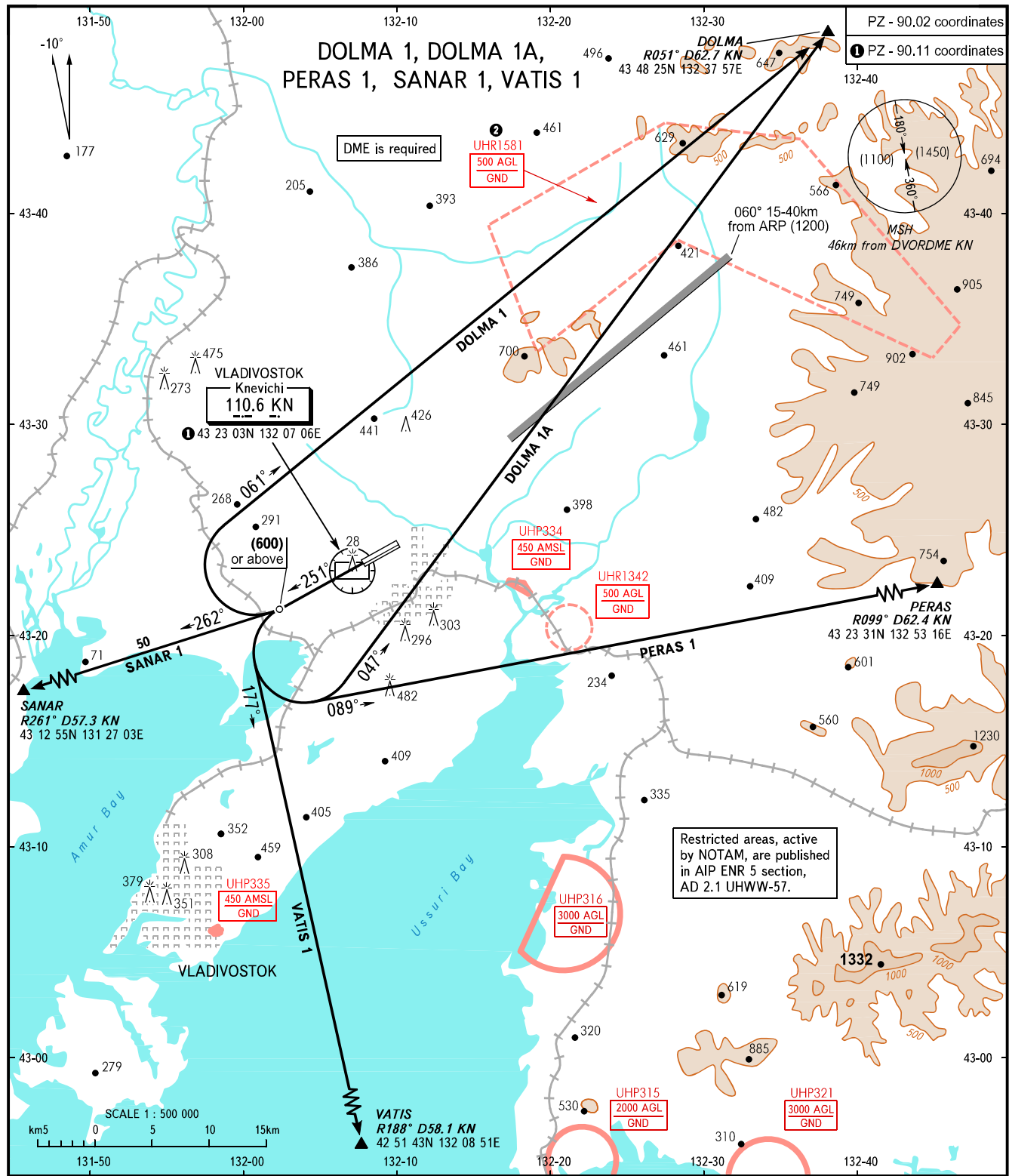


STANDARD DEPARTURE CHART
INSTRUMENT (SID) - ICAO

TRANSITION
HEIGHT: (1800)

VLADIVOSTOK, RUSSIA
KNEVICH I
RWY 25L



<p>TOWER 119.500</p> <p>RADAR 123.400</p>	<p>WARNING Crossing altitudes for entry points of AWY are as directed by ATC.</p> <p>② The restriction is not applicable to flights carried out according to SID and approach charts of VLADIVOSTOK /Knevichi AD.</p>	<p>RESTRICTED AREAS, active by NOTAM, are published in AIP ENR 5 section, AD 2.1 UHWW-57.</p>
---	--	---

BEARINGS AND TRACKS ARE MAGNETIC
ALTITUDES, HEIGHTS AND ELEVATIONS ARE IN METRES
DISTANCES ARE IN KILOMETRES

AIRAC AMDT 06/20 Federal Air Transport Agency

CHANGE: DIST, UHP321