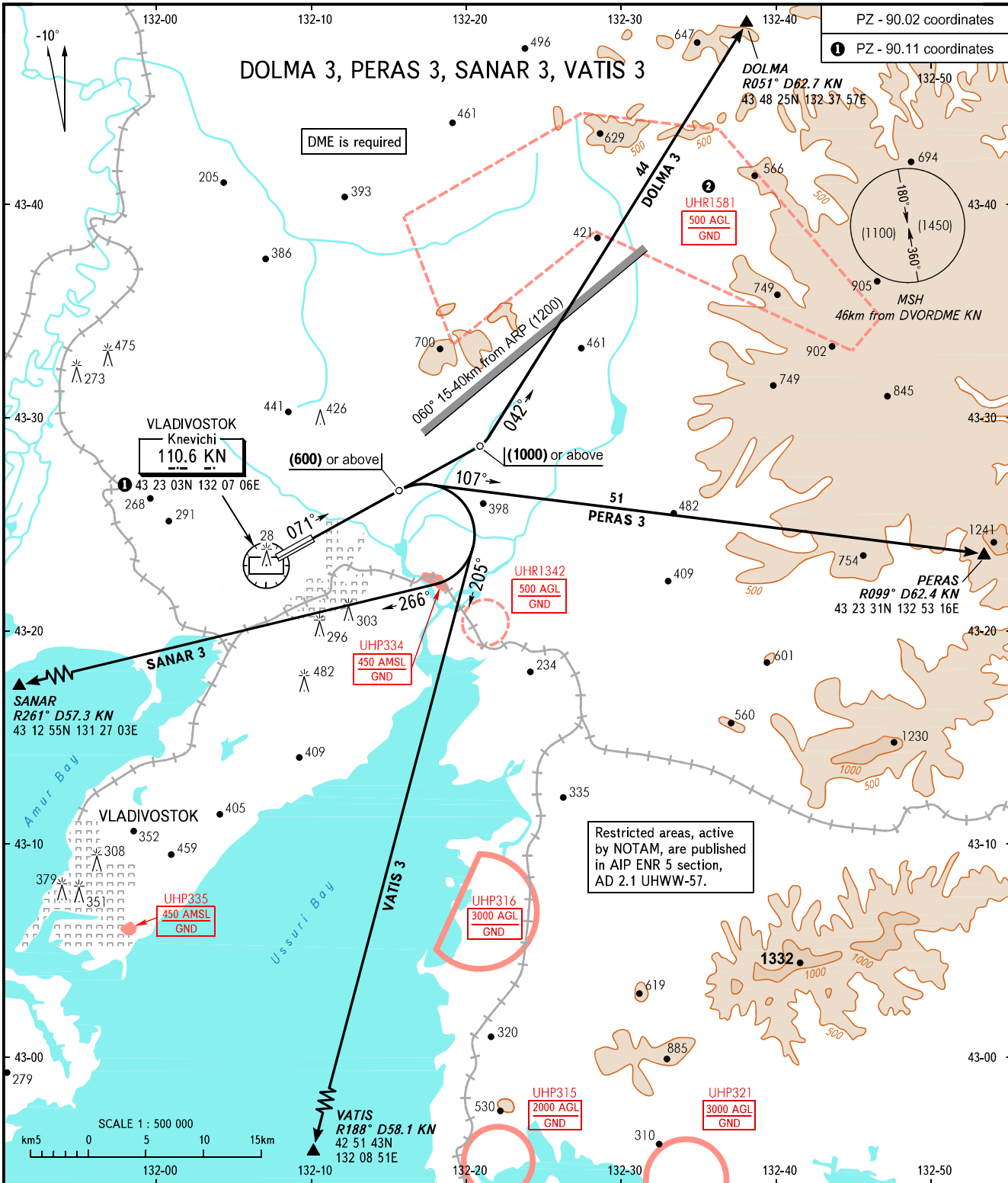


STANDARD DEPARTURE CHART
INSTRUMENT (SID) - ICAO

TRANSITION
HEIGHT: (1800)

VLADIVOSTOK, RUSSIA
KNEVICHY
RWY 07R



TOWER 119.500
RADAR 123.400

WARNING
Crossing altitudes for entry points of AWY are as directed by ATC.
② The restriction is not applicable to flights carried out according to SID and approach charts of VLADIVOSTOK/Knevichi AD.

BEARINGS AND TRACKS ARE MAGNETIC
ALTITUDES, HEIGHTS AND ELEVATIONS ARE IN METRES
DISTANCES ARE IN KILOMETRES

CHANGE: DIST, UHP321