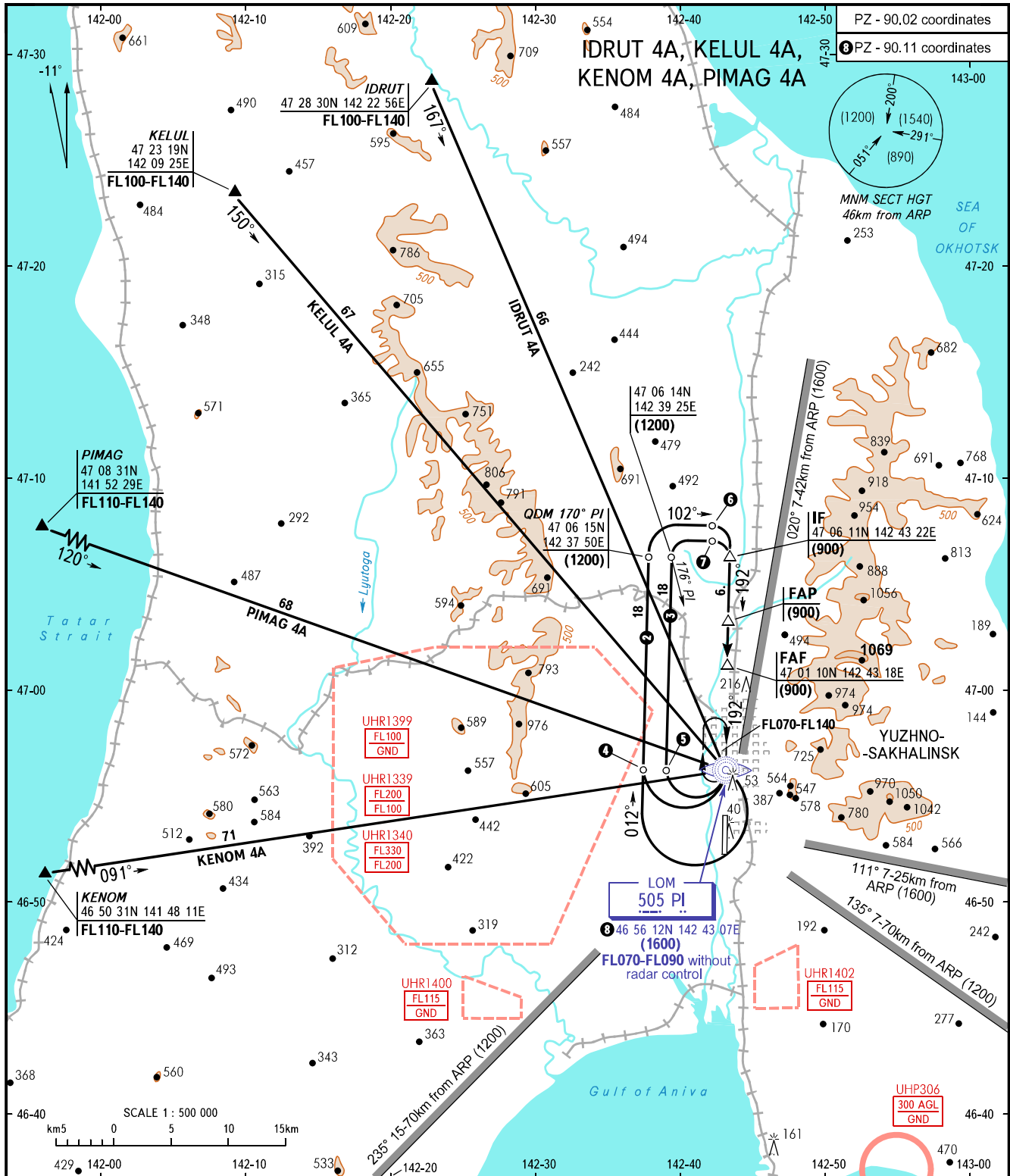


STANDARD ARRIVAL CHART
INSTRUMENT (STAR) - ICAO

YUZHNO-SAKHALINSK, RUSSIA
KHOMUTOVO
RWY 19

TRANSITION
LEVEL: ①



PZ - 90.02 coordinates
② PZ - 90.11 coordinates

MNM SECT HGT
46km from ARP

SEA OF OKHOTSK

RADAR 120.600
TOWER 122.000

BEARINGS AND TRACKS ARE MAGNETIC
ALTITUDES, HEIGHTS AND ELEVATIONS ARE IN METRES
DISTANCES ARE IN KILOMETRES

- ② CAT C, D ACFT - is AVBL when the restricted area UHR1399 is not active.
- ③ CAT A, B ACFT
- ④ QDM 102° PI
46 56 16N 142 37 36E
(1500)
- ⑤ QDM 102° PI
46 56 15N 142 39 11E
(1500)
- ⑥ QDM 185° PI
47 07 32N 142 41 27E
(900)
- ⑦ QDM 186° PI
47 07 09N 142 42 00E
(900)

① TRANSITION LEVEL:
- FL070 when atmospheric pressure is 758mm mercury column or above;
- FL080 when atmospheric pressure is less than 758mm and is 731mm mercury column or above;
- FL090 when atmospheric pressure is less than 731mm mercury column.

WARNING
STAR: KENOM 4A, PIMAG 4A are available when the restricted area UHR1399 is not active.