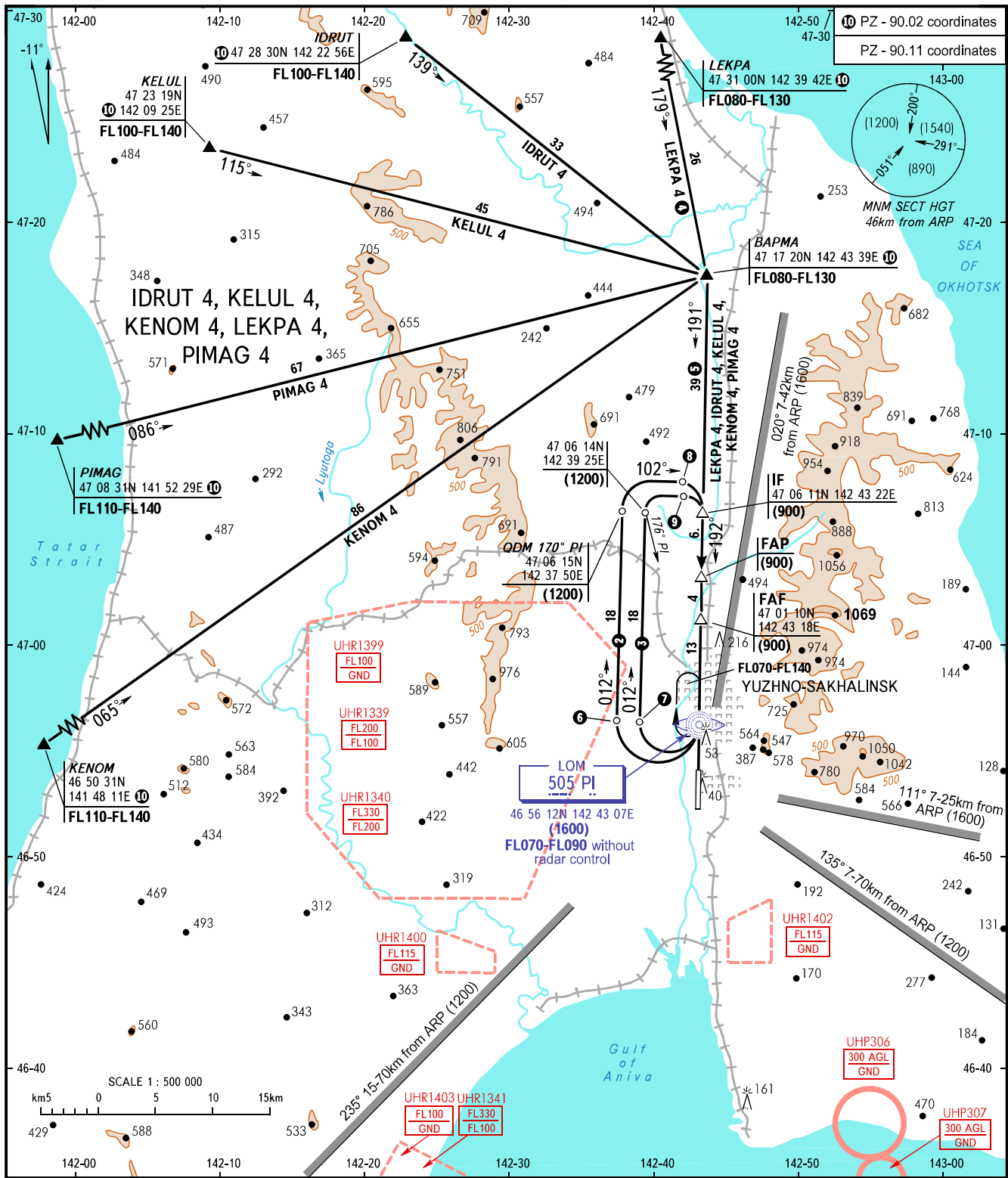


STANDARD ARRIVAL CHART
INSTRUMENT (STAR) - ICAO

YUZHNO-SAKHALINSK, RUSSIA
KHOMUTOVO
RWY 19

TRANSITION
LEVEL: 1



RADAR TOWER	120.600 122.000	6 QDM 102° PI 46 56 16N 142 37 36E (1500)	8 QDM 185° PI 47 07 32N 142 41 27E (900)	1 TRANSITION LEVEL: - FL070 when atmospheric pressure is 758mm mercury column or above; - FL080 when atmospheric pressure is less than 758mm and is 731mm mercury column or above; - FL090 when atmospheric pressure is less than 731mm mercury column.
		7 QDM 102° PI 46 56 15N 142 39 11E (1500)	9 QDM 186° PI 47 07 09N 142 42 00E (900)	
BEARINGS AND TRACKS ARE MAGNETIC ALTITUDES, HEIGHTS AND ELEVATIONS ARE IN METRES DISTANCES ARE IN KILOMETRES				
2 CAT C, D ACFT 3 CAT A, B ACFT 4 Only for Russian users of airspace. 5 Distance to LOM PI.				

CHANGE: UHR1339, 1340, 1341