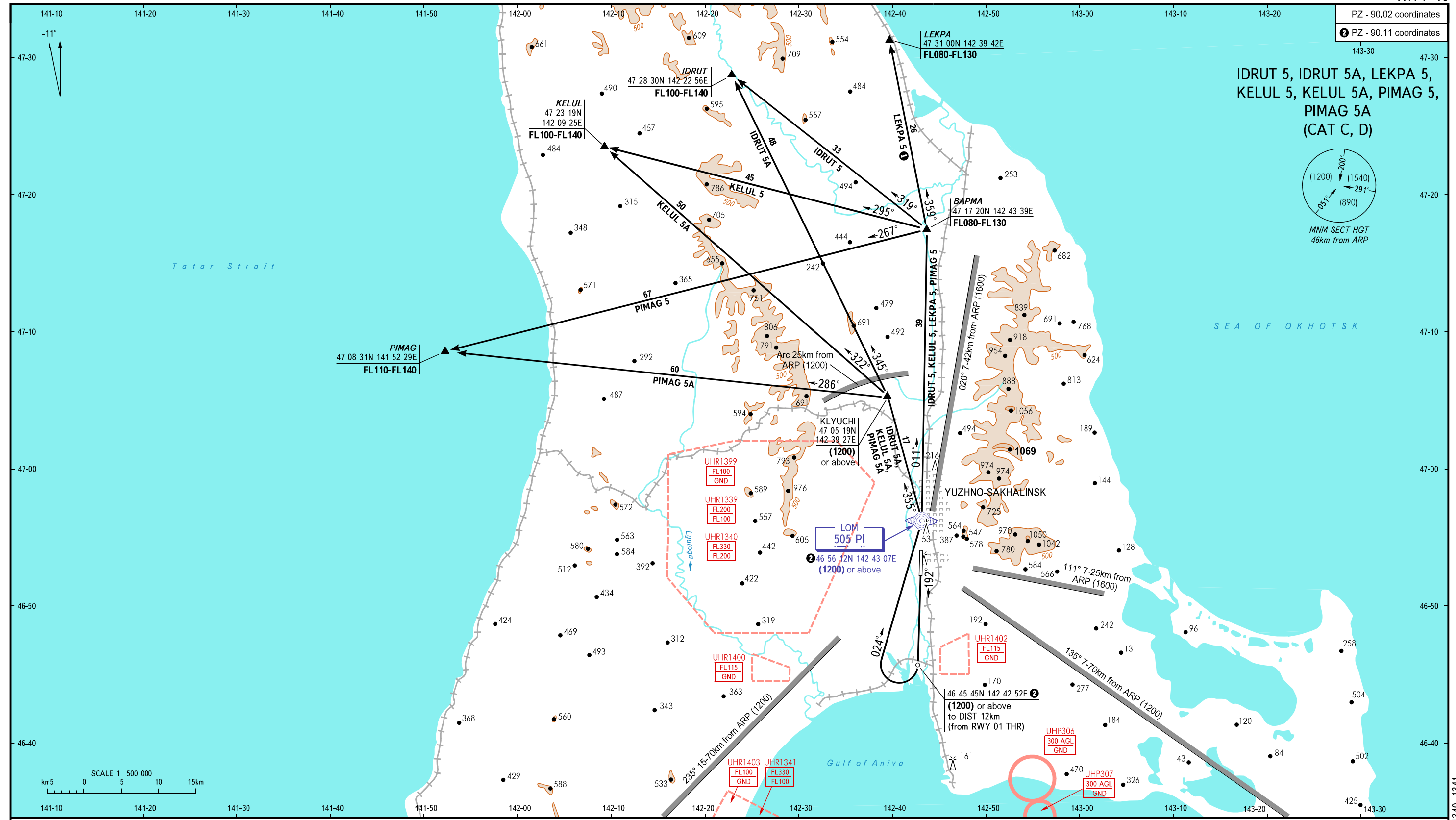


STANDARD DEPARTURE CHART  
INSTRUMENT (SID) - ICAO

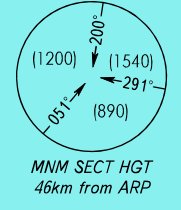
TRANSITION  
HEIGHT : (1600)

YUZHNO-SAKHALINSK, RUSSIA  
KHOMUTOVO  
RWY 19

PZ - 90.02 coordinates  
PZ - 90.11 coordinates



IDRUT 5, IDRUT 5A, LEKPA 5, LEKPA 5A, PIMAG 5, PIMAG 5A (CAT C, D)



RADAR TOWER  
120.600  
122.000

Only for Russian users of airspace.

BEARINGS AND TRACKS ARE MAGNETIC  
ALTITUDES, HEIGHTS AND ELEVATIONS ARE IN METRES  
DISTANCES ARE IN KILOMETRES

CHANGE: UHR1339, 1340, 1341