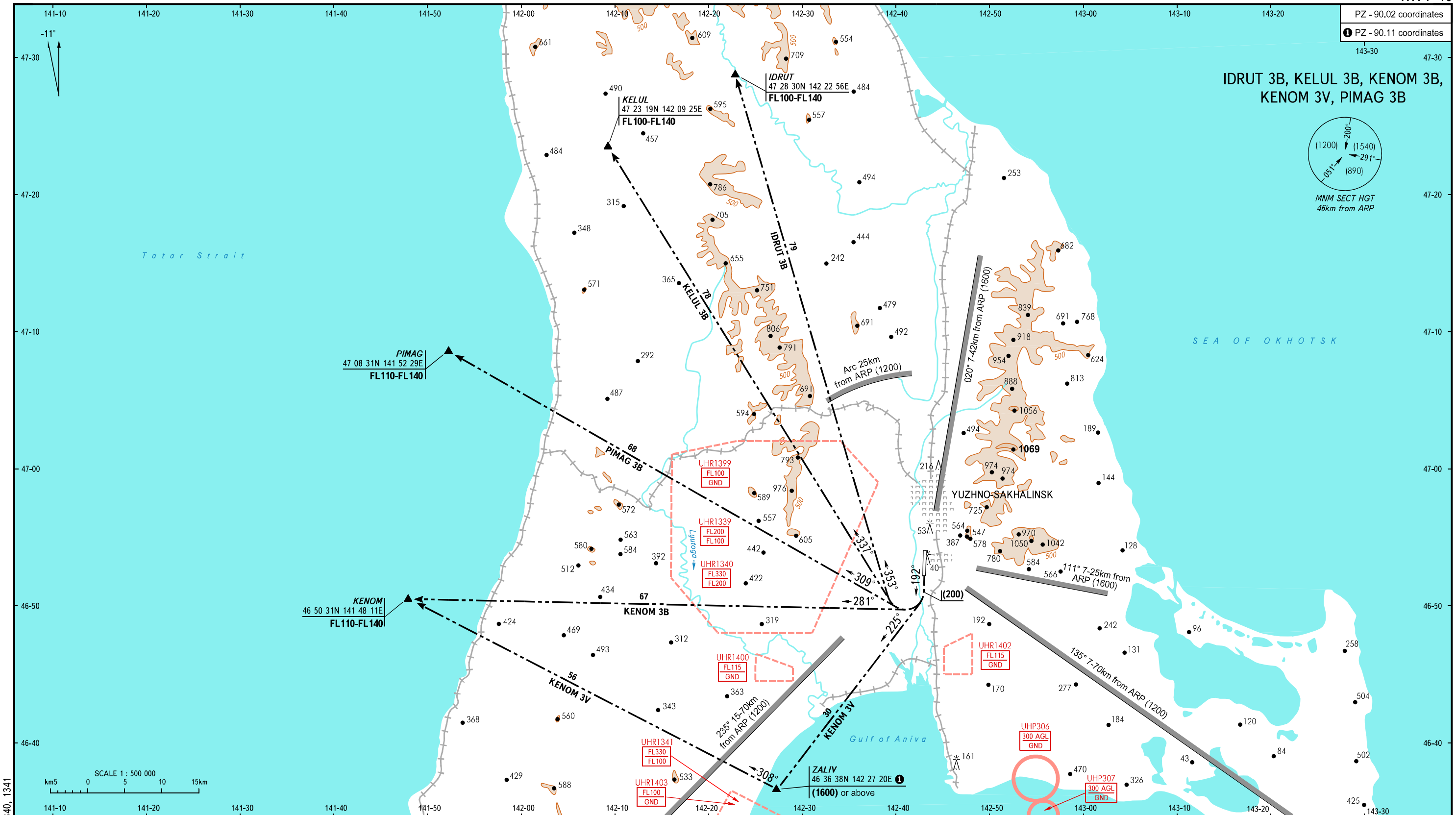


STANDARD DEPARTURE CHART
INSTRUMENT (SID) - ICAO

TRANSITION
HEIGHT : (1600)

YUZHNO-SAKHALINSK, RUSSIA
KHOMUTOVO
RWY 19



CHANGE: UHR1339, 1340, 1341

RADAR 120.600
TOWER 122.000

BEARINGS AND TRACKS ARE MAGNETIC
ALTITUDES, HEIGHTS AND ELEVATIONS ARE IN METRES
DISTANCES ARE IN KILOMETRES

WARNING
SID: IDRUT 3B, KELUL 3B, KENOM 3B, PIMAG 3B
are AVBL when restricted area UHR1399 is not active.