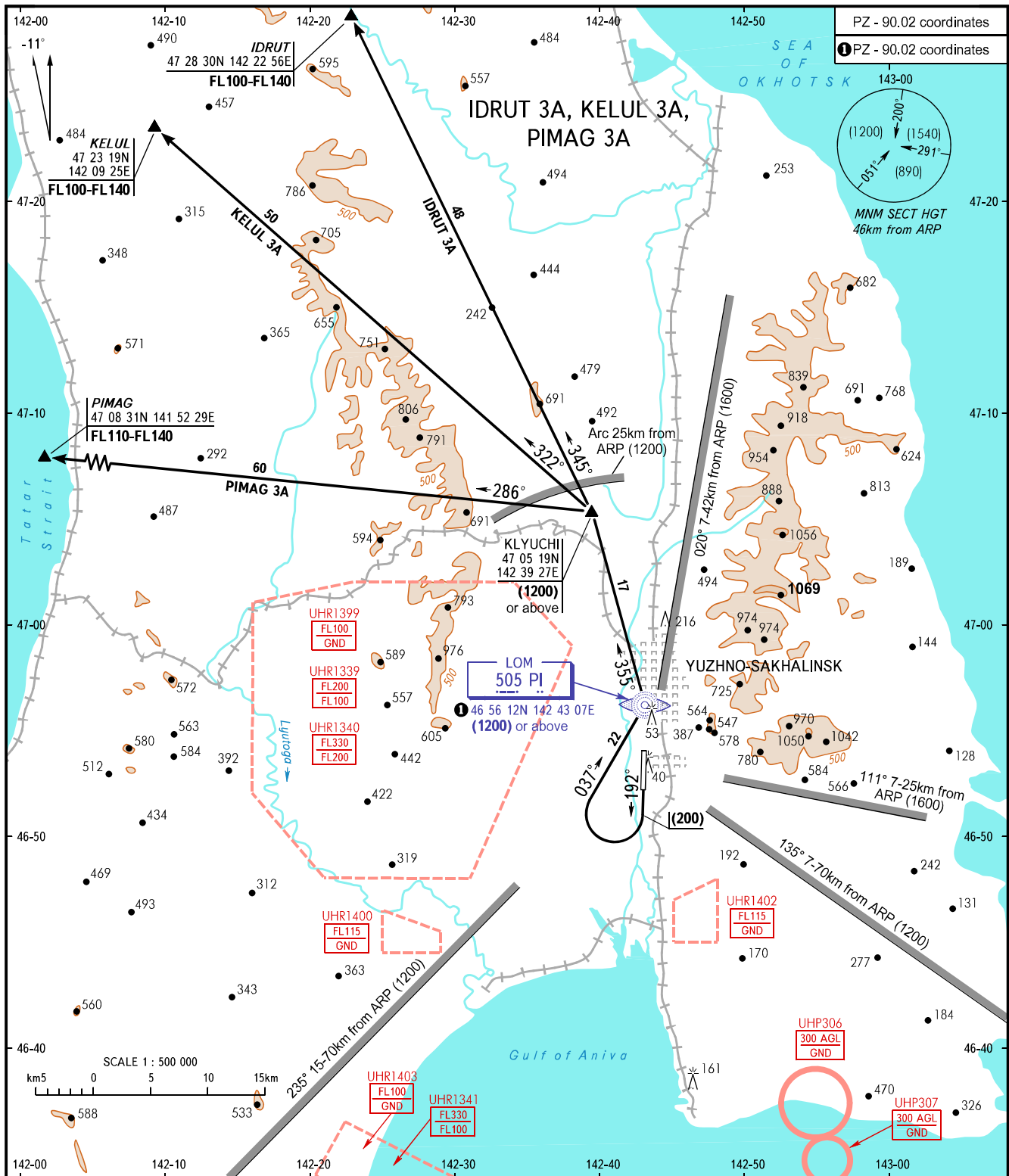


STANDARD DEPARTURE CHART
INSTRUMENT (SID) - ICAO

YUZHNO-SAKHALINSK, RUSSIA
KHOMUTOVO
RWY 19

TRANSITION
HEIGHT : (1600)



PZ - 90.02 coordinates
 PZ - 90.02 coordinates

MNM SECT HGT
46km from ARP

(1200) (1540) (291) (890)

RADAR TOWER 120.600
122.000

BEARINGS AND TRACKS ARE MAGNETIC
 ALTITUDES, HEIGHTS AND ELEVATIONS ARE IN METRES
 DISTANCES ARE IN KILOMETRES

AIRAC AMDT 05/19

Federal Air Transport Agency

CHANGE: UHR1339, 1340, 1341