

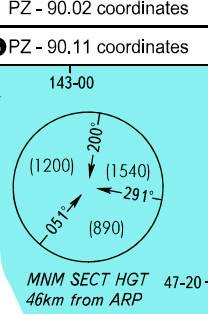
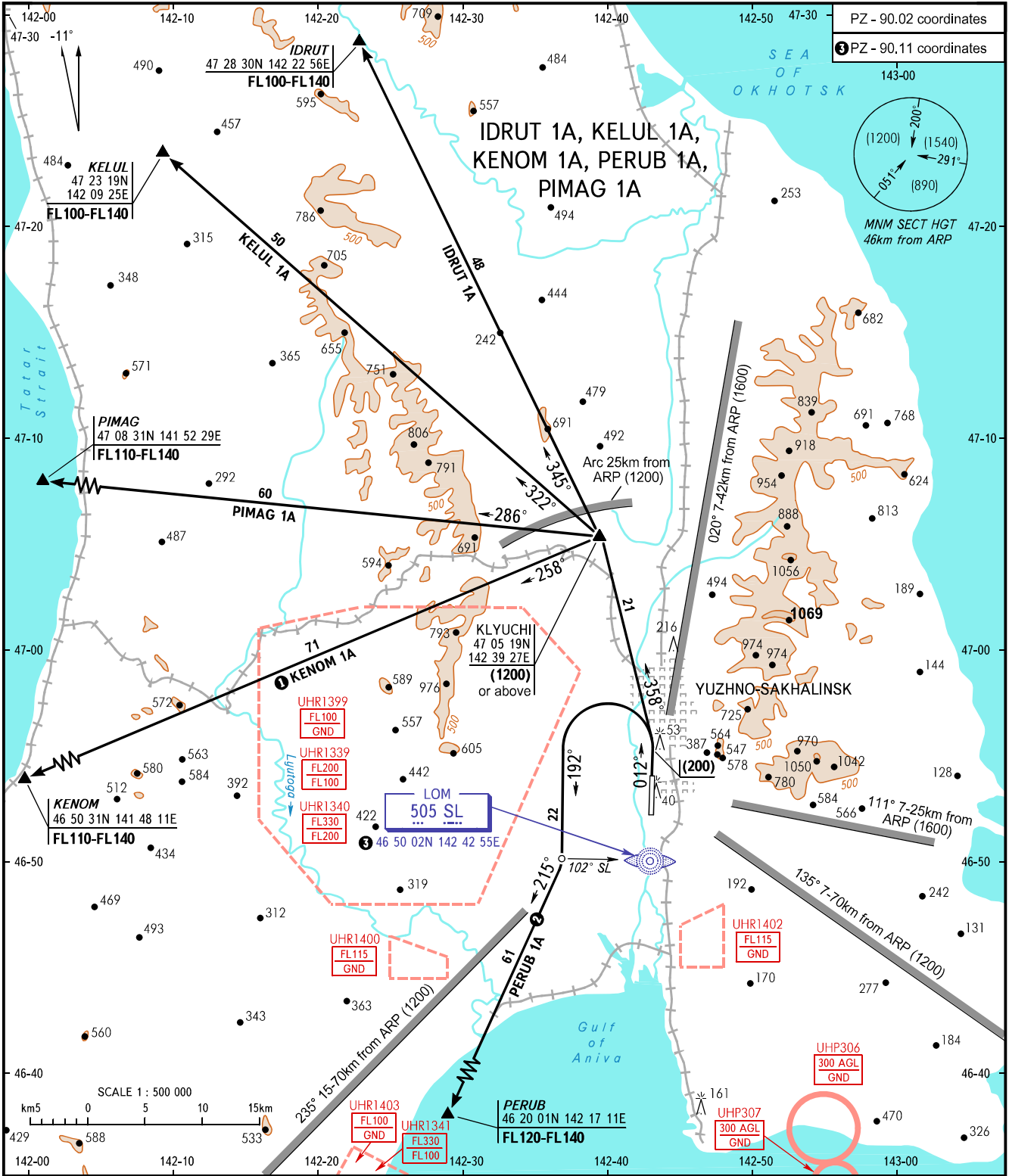
STANDARD DEPARTURE CHART  
INSTRUMENT (SID) - ICAO

TRANSITION  
HEIGHT : (1600)

YUZHNO-SAKHALINSK, RUSSIA

KHOMUTOVO

RWY 01



RADAR TOWER	120.600
	122.000

- ① SID: KENOM 1A is AVBL when restricted area UHR1399 is not active.
- ② SID: PERUB 1A is AVBL when restricted area UHR1403 is not active.

BEARINGS AND TRACKS ARE MAGNETIC  
ALTITUDES, HEIGHTS AND ELEVATIONS ARE IN METRES  
DISTANCES ARE IN KILOMETRES

CHANGE: UHR1339, 1340, 1341