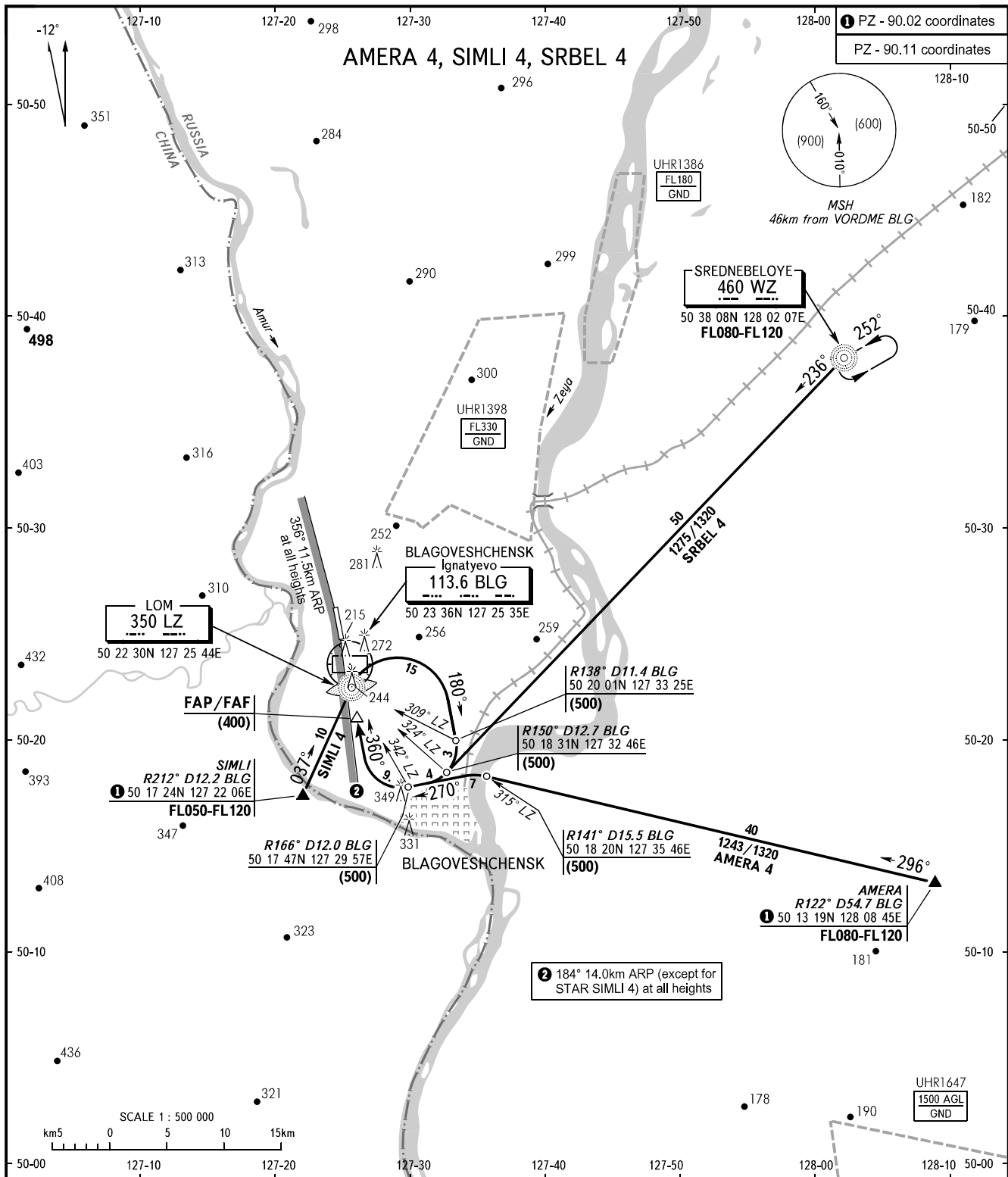


STANDARD ARRIVAL CHART  
INSTRUMENT (STAR) - ICAO

TRANSITION  
LEVEL: **FL050**

**BLAGOVESHCHENSK, RUSSIA**  
IGNATYEVO  
RWY 36



① PZ - 90.02 coordinates  
PZ - 90.11 coordinates

② 184° 14.0km ARP (except for STAR SIMLI 4) at all heights

TOWER **127.200**

**WARNING:**  
1. The procedure envisages descending when executing a final turn.  
2. Approach shall be executed by ATC controller's instructions.

BEARINGS AND TRACKS ARE MAGNETIC  
ALTITUDES, HEIGHTS AND ELEVATIONS ARE IN METRES  
DISTANCES ARE IN KILOMETRES

CHANGE: COORD, UHR1647