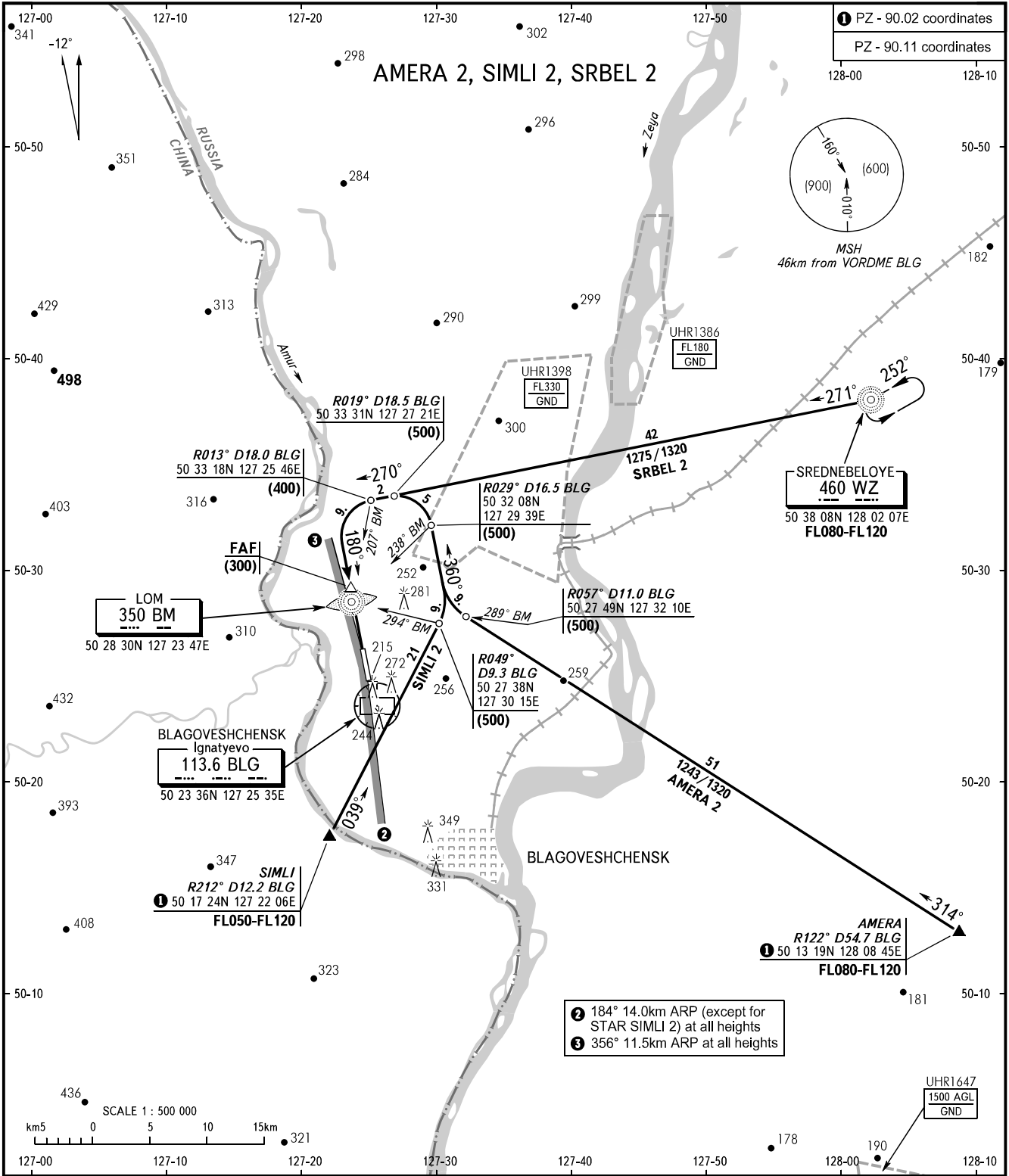


STANDARD ARRIVAL CHART
INSTRUMENT (STAR) - ICAO

TRANSITION
LEVEL: **FL050**

BLAGOVESHCHENSK, RUSSIA
IGNATYEV
RWY 18



② 184° 14.0km ARP (except for STAR SIMLI 2) at all heights
③ 356° 11.5km ARP at all heights

TOWER 127.200

- WARNING:**
1. The procedure envisages descending when executing a final turn.
 2. Approach shall be executed by ATC controller's instructions.

BEARINGS AND TRACKS ARE MAGNETIC
ALTITUDES, HEIGHTS AND ELEVATIONS ARE IN METRES
DISTANCES ARE IN KILOMETRES

CHANGE: UHR1647