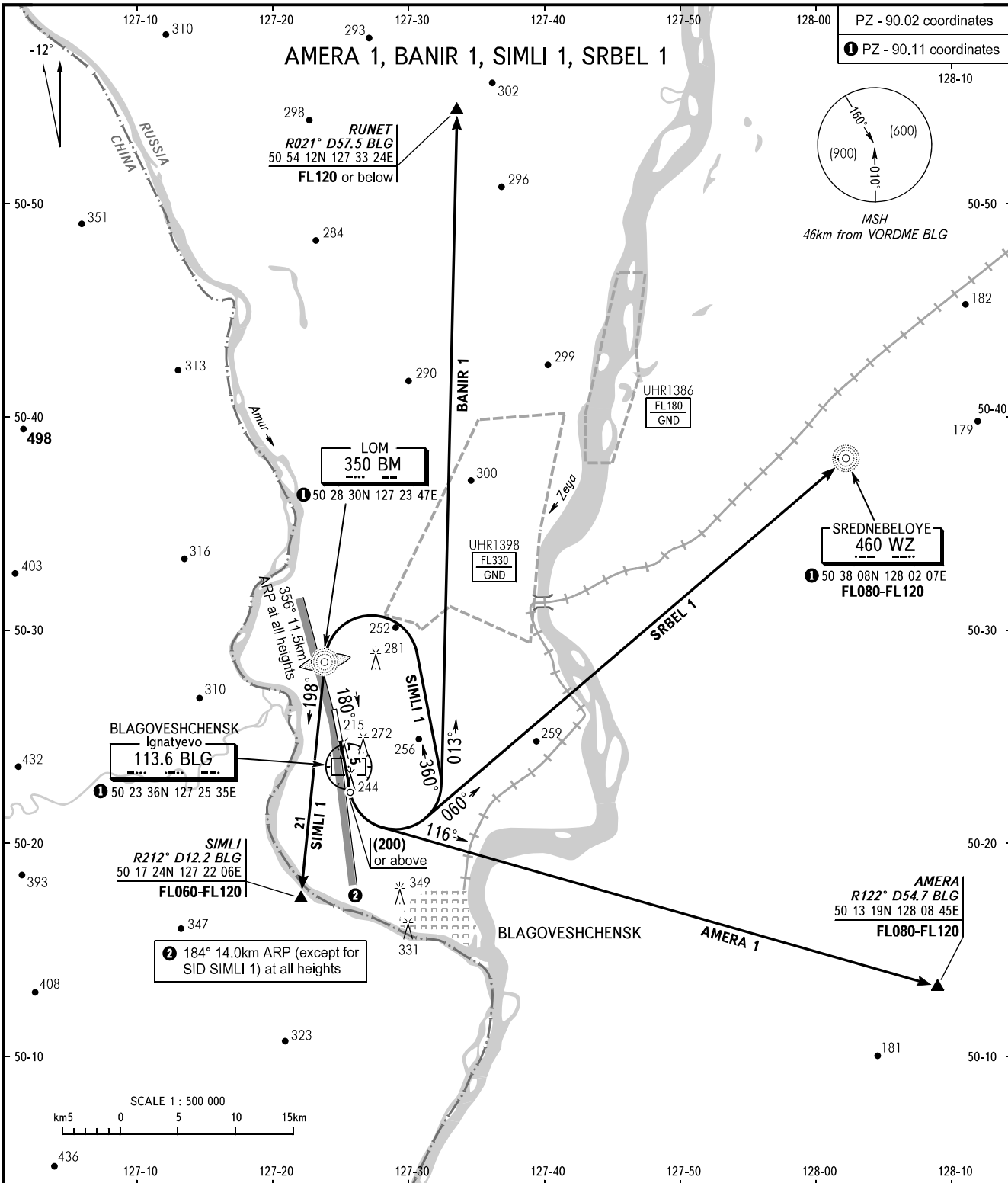


STANDARD DEPARTURE CHART
INSTRUMENT (SID) - ICAO

TRANSITION
HEIGHT: (900)

BLAGOVESHCHENSK, RUSSIA
IGNATYEVO
RWY 18



TOWER 127.200

WARNING:

1. These SID are available to all ACFT types.
2. Initial turn shall be executed at a distance not more than 9km from RWY THR.
3. CAT C, D ACFT are allowed to make initial turn at (100).
4. The climb gradient shall be 3.7% for passing CRP AMERA at FL080.

BEARINGS AND TRACKS ARE MAGNETIC
ALTITUDES, HEIGHTS AND ELEVATIONS ARE IN METRES
DISTANCES ARE IN KILOMETRES

CHANGE: HGT