

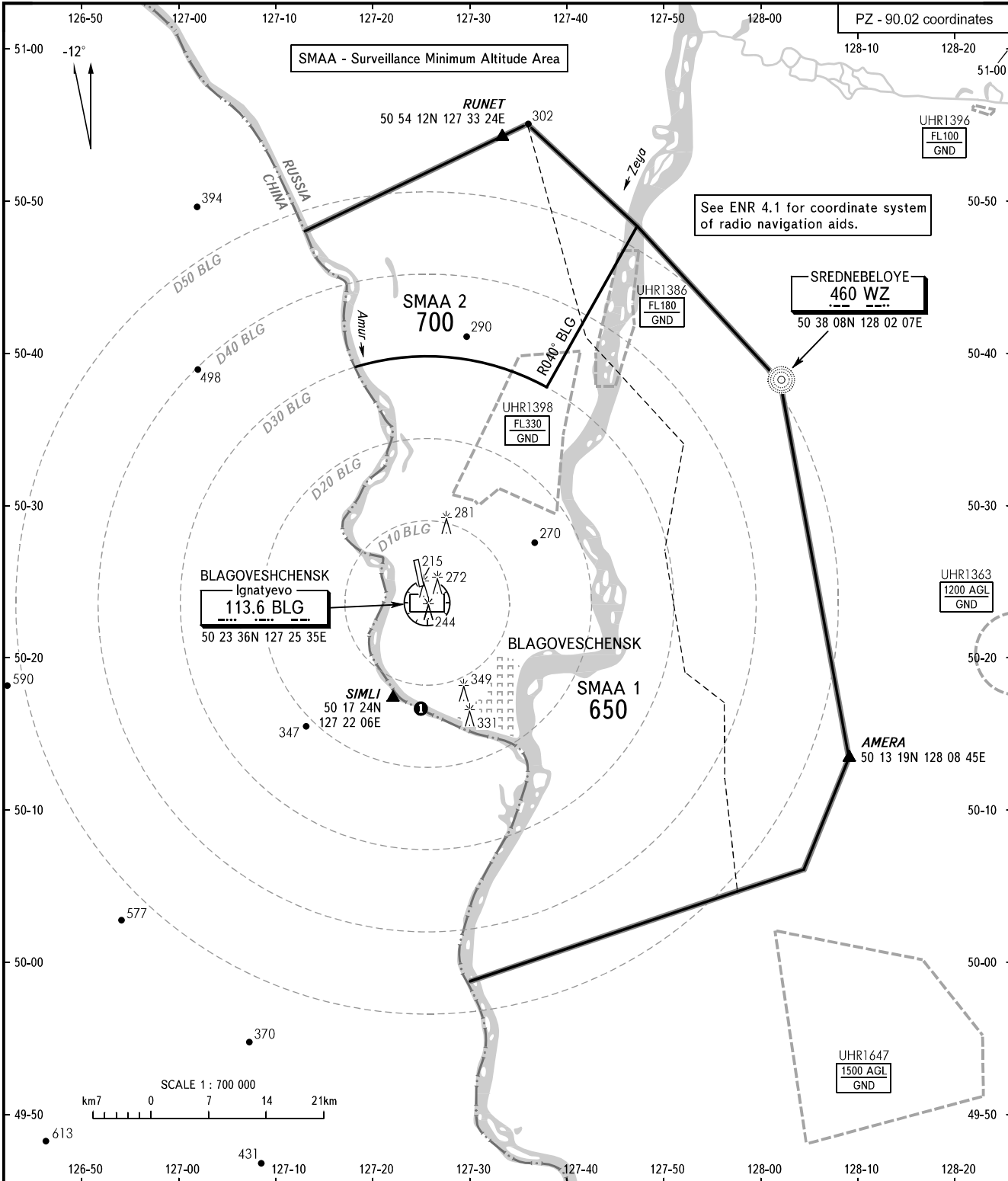
ATC SURVEILLANCE MINIMUM  
ALTITUDE CHART - ICAO

ELEV  
195m

TRANSITION HEIGHT : (900)

BLAGOVESHCHENSK, RUSSIA

IGNATYEVO



See ENR 4.1 for coordinate system of radio navigation aids.

**WARNING:**

1. The chart may only be used for cross-checking of altitudes assigned while the aircraft is under radar control.
  2. When vectoring is carried out under low-temperature conditions, minimum vectoring altitudes for IFR flight must be corrected by altimeter temperature correction.
- ① CTA, CTR boundaries coincide with the Russian Federation state border.

BEARINGS AND TRACKS ARE MAGNETIC  
ALTITUDES, HEIGHTS AND ELEVATIONS ARE IN METRES  
DISTANCES ARE IN KILOMETRES

CHANGE: New chart

**BLAGOVESHCHENSK, RUSSIA**  
**IGNATYEVO**

| SURVEILLANCE MINIMUM ALTITUDE AREAS |            |  |
|-------------------------------------|------------|--|
| IDENT                               | MNM<br>ALT | LATERAL LIMITS (PZ-90.11 coordinates)  |
| SMAA 1                              | 650        | 503901N 1271753E, then clockwise by arc of a circle radius of 30 KM centred at 502336N 1272535E to 503753N 1273732E - 504817N 1274620E, then along CTA boundary to 495843N 1272941E, then along the state border to 503901N 1271753E |
| SMAA 2                              | 700        | 503901N 1271753E, then clockwise by arc of a circle radius of 30 KM centred at 502336N 1272535E to 503753N 1273732E - 504817N 1274620E, then along CTA boundary to 504756N 1271248E, then along the state border to 503901N 1271753E |