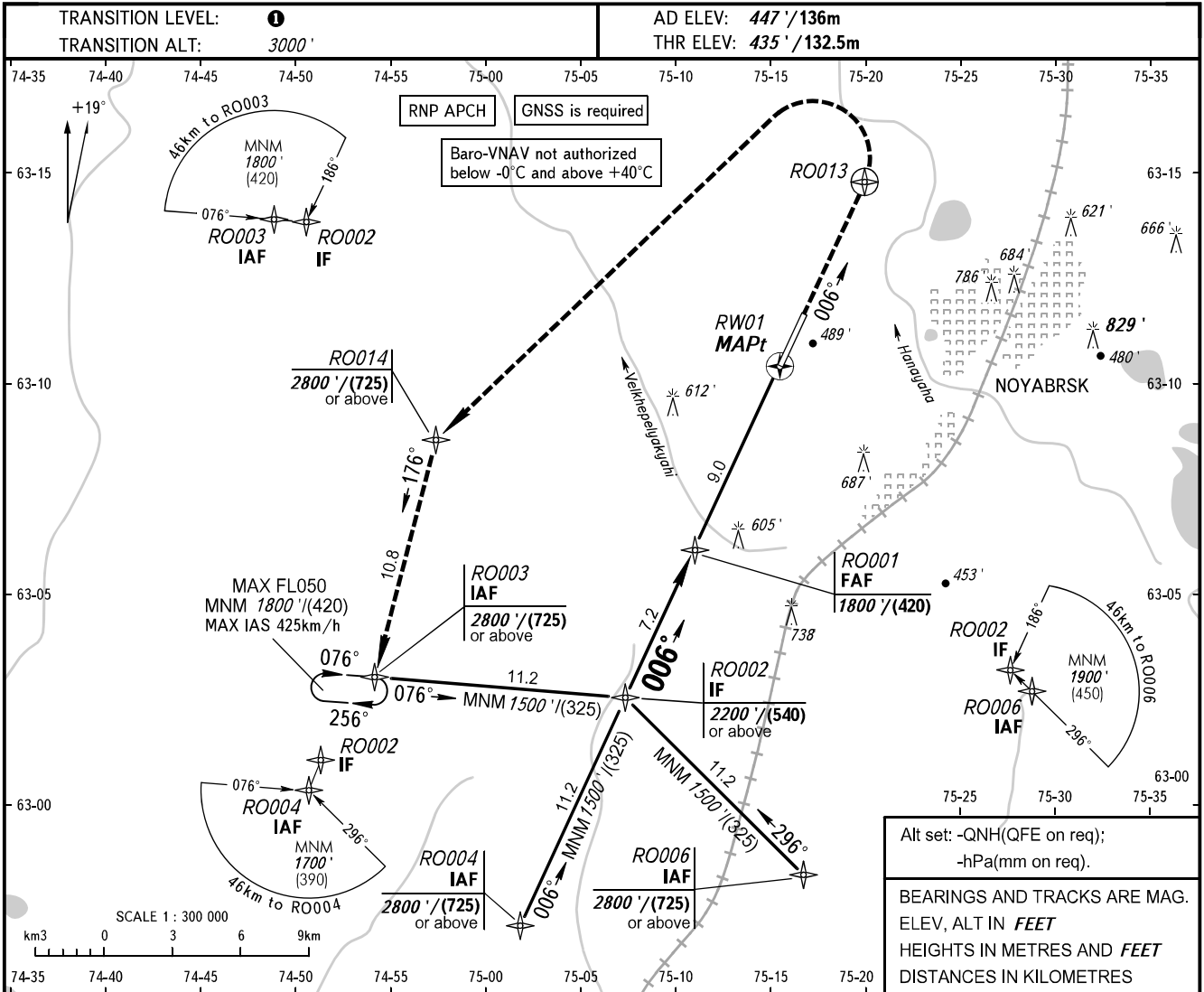


**INSTRUMENT
APPROACH
CHART - ICAO**

TOWER **121.200**

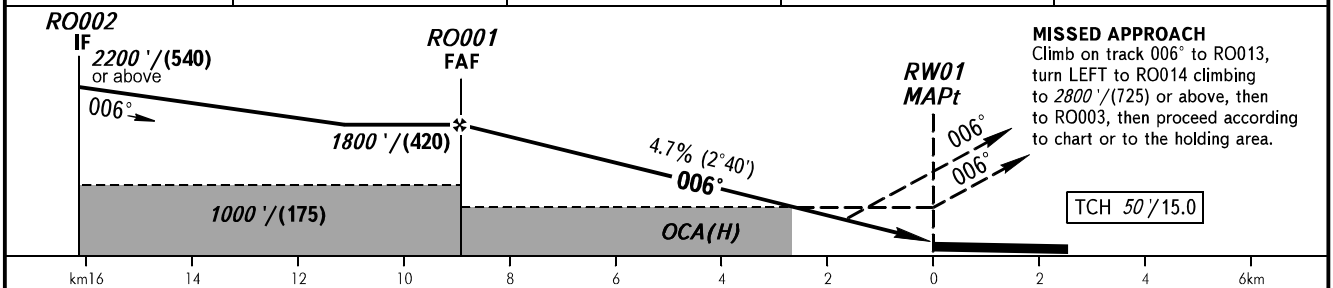
**NOYABRSK, RUSSIA
NOYABRSK
RNP RWY 01**



Alt set: -QN(H)(QFE on req);
-hPa(mm on req).

BEARINGS AND TRACKS ARE MAG.
ELEV, ALT IN FEET
HEIGHTS IN METRES AND FEET
DISTANCES IN KILOMETRES

DIST to RW01	9.0	8.0	6.0	4.0
ALTITUDE/HEIGHT	1800' / (420)	1710' / (390)	1410' / (300)	1100' / (205)



		OCA(H)			
		A	B	C	D
Straight-in Approach	LNAV	800' (370') (112)	800' (370') (112)	800' (370') (112)	800' (370') (112)
	LNAV VNAV	712' (277') (85)	730' (295') (90)	732' (297') (91)	738' (303') (93)
Circling		900' (470') (142)	950' (520') (157)	1090' (660') (200)	1180' (750') (228)

1 TRANSITION LEVEL:
- FL040 when QNH is 1013 hPa (760mm mercury column) or above;
- FL050 when QNH is 977 hPa (733mm mercury column) or above, but less than 1013 hPa (760mm mercury column);
- FL060 when QNH is less than 977 hPa (733mm mercury column).

WARNING
Flights over the city below 2500' / (630) are PROHIBITED.

GROUND SPEED	km/h	150	180	210	240	270	300	330	360	390	420	450
FAF - MAPt 8.9km	min:sec	3:34	2:53	2:28	2:09	1:55	1:44	1:34	1:26	1:20	1:14	1:09
RATE OF DESCENT	m/s	1.9	2.3	2.7	3.1	3.5	3.9	4.3	4.7	5.0	5.4	5.8
	ft/min	374	453	531	610	689	768	846	925	984	1063	1142

CHANGE: New chart