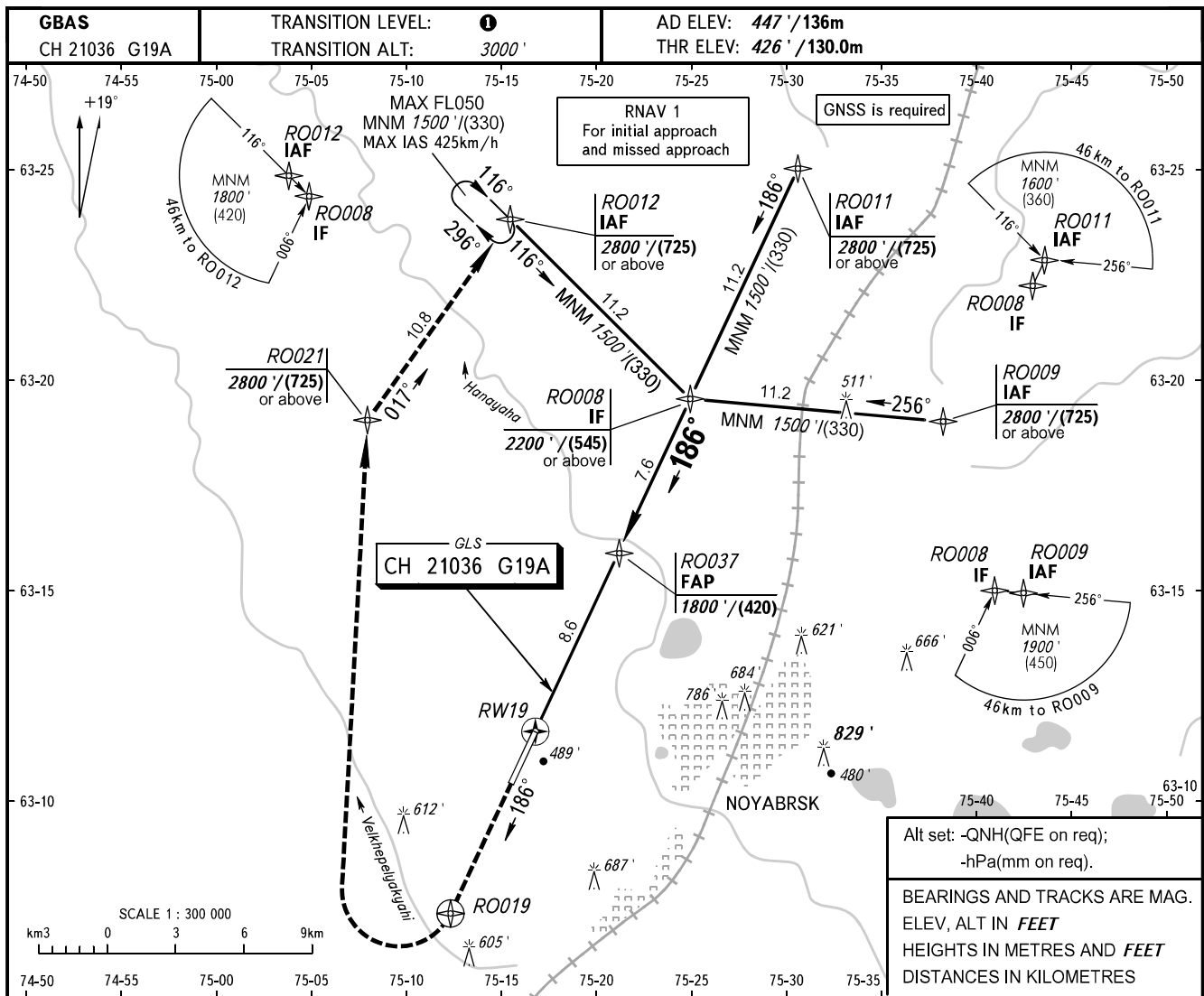


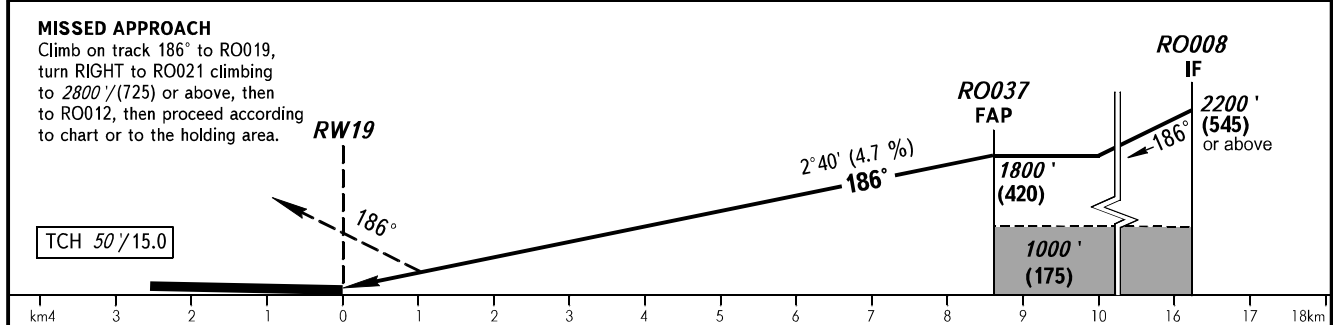
INSTRUMENT
APPROACH
CHART - ICAO

NOYABRSK, RUSSIA
NOYABRSK
GLS RWY 19

TOWER 121.200



DIST to RW19	2.0	4.0	6.0	8.0	8.6
ALTITUDE/HEIGHT	783'/(110)	1089'/(205)	1394'/(300)	1700'/(390)	1800'/(420)



OCA(H)		A	B	C	D								
Straight-in Approach	CAT I	601' (174') (54)	611' (184') (57)	621' (194') (60)	631' (204') (63)								
	Circling	900' (470') (145)	950' (520') (160)	1090' (660') (203)	1180' (750') (230)								
GROUND SPEED		km/h	150	180	210	240	270	300	330	360	390	420	450
RATE OF DESCENT		m/s	1.9	2.3	2.7	3.1	3.5	3.9	4.3	4.7	5.0	5.4	5.8
		ft/min	374	453	531	610	689	768	846	925	984	1063	1142

1 TRANSITION LEVEL:
- FL040 when QNH is 1013 hPa (760mm mercury column) or above;
- FL050 when QNH is 977 hPa (733mm mercury column) or above, but less than 1013 hPa (760mm mercury column);
- FL060 when QNH is less than 977 hPa (733mm mercury column).

WARNING
Flights over the city below 2500'/(635) are PROHIBITED.