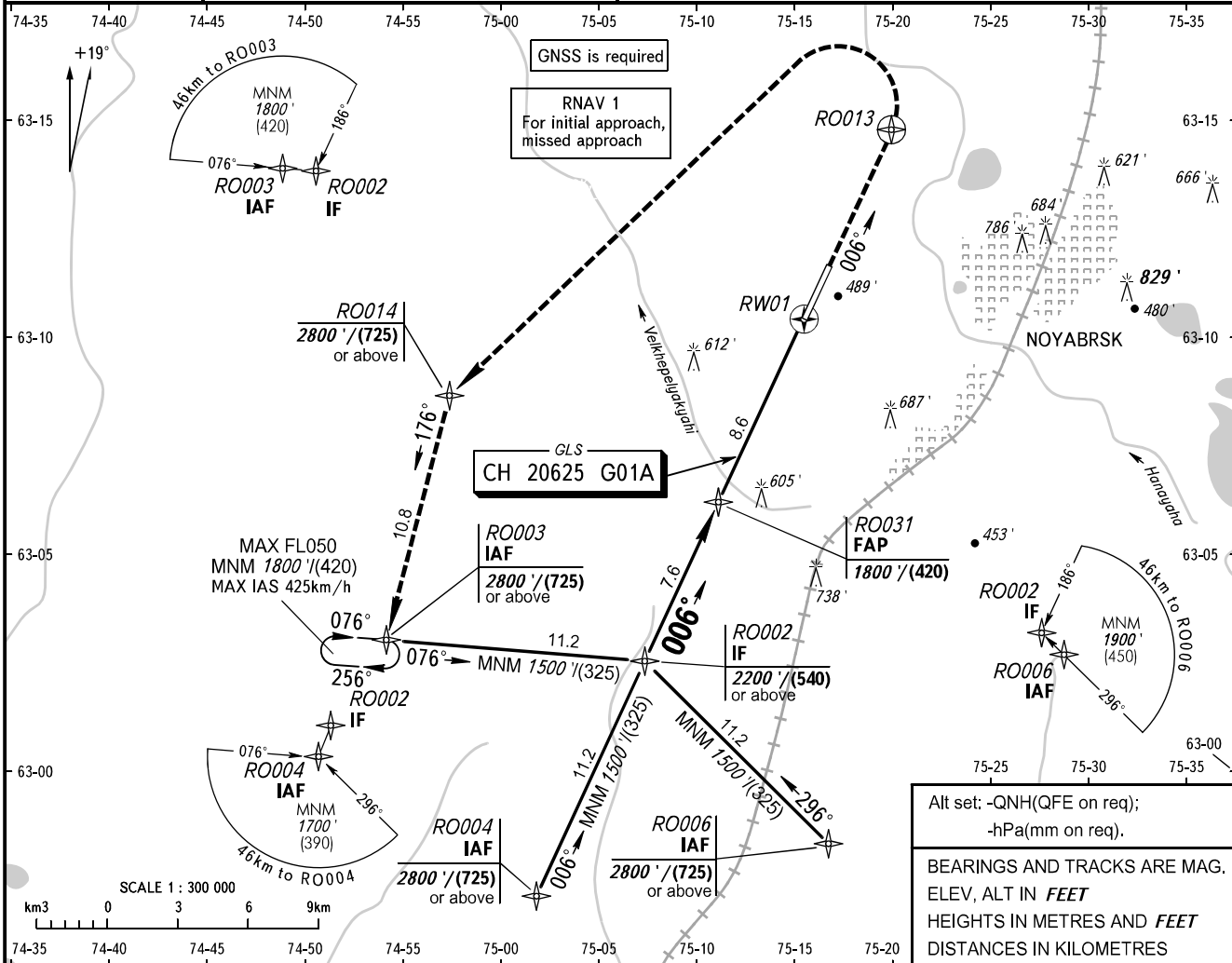


**INSTRUMENT  
APPROACH  
CHART - ICAO**

**NOYABRSK, RUSSIA  
NOYABRSK  
GLS RWY 01**

TOWER	121.200
-------	---------

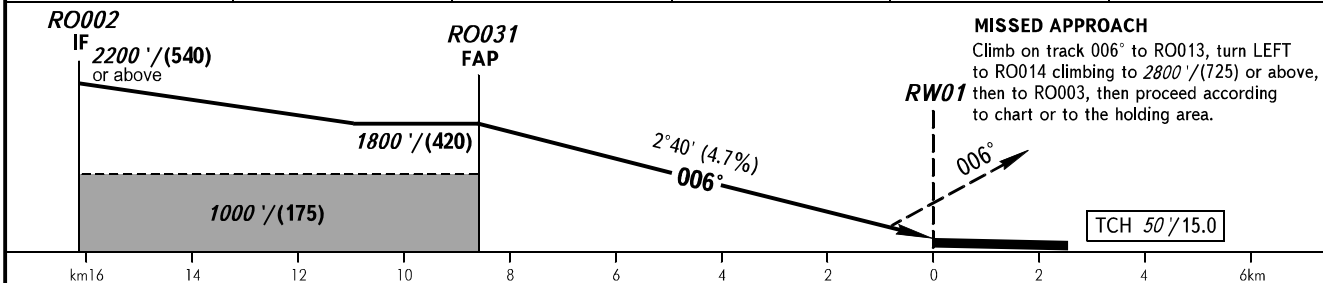
<b>GBAS</b> CH 20625 G01A	TRANSITION LEVEL: TRANSITION ALT: 3000'	AD ELEV: 447' / 136m THR ELEV: 435' / 132.5m
------------------------------	--	---



Alt set: -QNH(QFE on req);  
-hPa(mm on req).

BEARINGS AND TRACKS ARE MAG.  
ELEV, ALT IN FEET  
HEIGHTS IN METRES AND FEET  
DISTANCES IN KILOMETRES

DIST to RW01	8.6	8.0	6.0	4.0	2.0
ALTITUDE/HEIGHT	1800' / (420)	1707' / (390)	1401' / (295)	1096' / (205)	790' / (110)



OCA(H)		A	B	C	D
Straight-in Approach	CAT I	612' (177') (54)	622' (187') (57)	632' (197') (61)	642' (207') (64)
	Circling	900' (470') (142)	950' (520') (157)	1090' (660') (200)	1180' (750') (228)

**TRANSITION LEVEL:**

- FL040 when QNH is 1013 hPa (760mm mercury column) or above;
- FL050 when QNH is 977 hPa (733mm mercury column) or above, but less than 1013 hPa (760mm mercury column);
- FL060 when QNH is less than 977 hPa (733mm mercury column).

**WARNING**  
Flights over the city below 2500' / (630) are PROHIBITED.

GROUND SPEED	km/h	150	180	210	240	270	300	330	360	390	420	450
RATE OF DESCENT	m/s	1.9	2.3	2.7	3.1	3.5	3.9	4.3	4.7	5.0	5.4	5.8
	ft/min	374	453	531	610	689	768	846	925	984	1063	1142

CHANGE: New chart