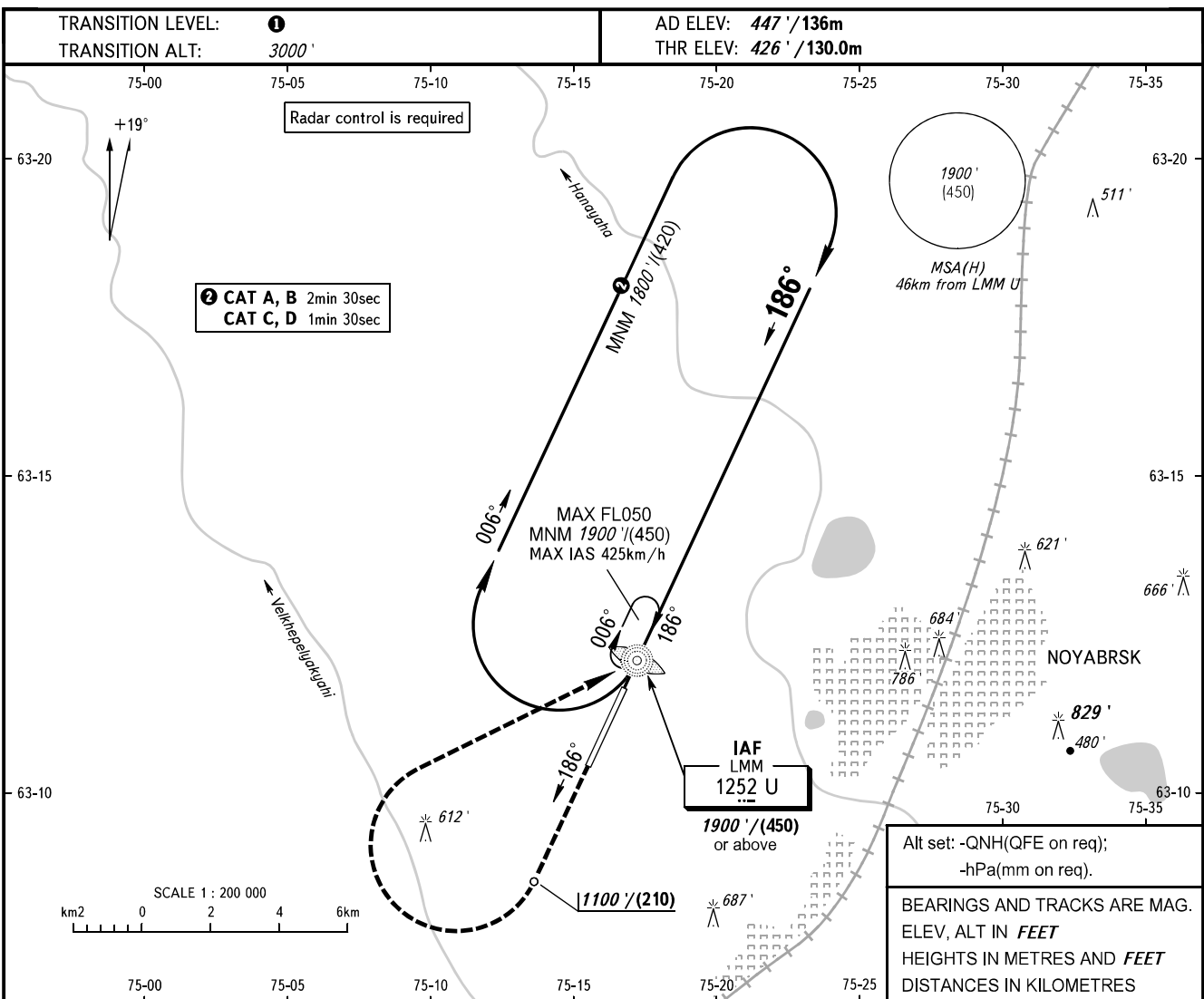


**INSTRUMENT
APPROACH
CHART - ICAO**

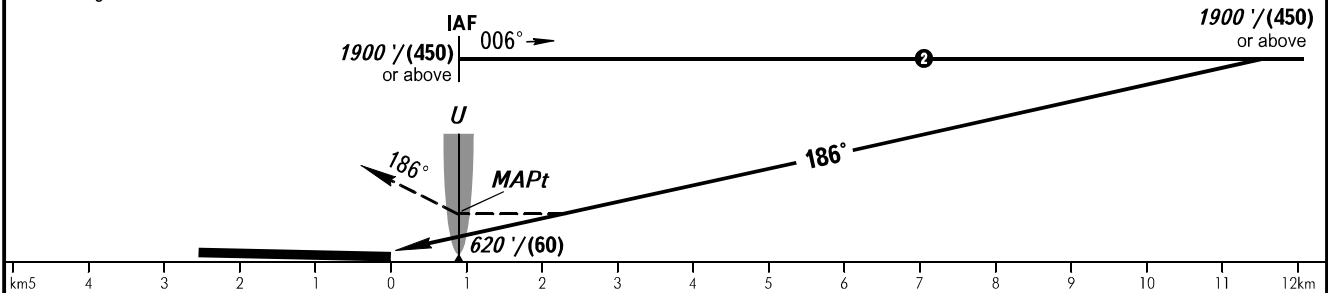
TOWER 121.200

NOYABRSK, RUSSIA
NOYABRSK
NDB U RWY 19



MISSED APPROACH

Climb on track 186° to 1100' / (210), turn RIGHT to LMM U climbing to 1900' / (450) or above, then proceed according to chart.



OCA(H)		A	B	C	D
Straight-in Approach		780' (360') (108)	780' (360') (108)	780' (360') (108)	780' (360') (108)
	Circling	900' (470') (145)	950' (520') (160)	1090' (660') (203)	1180' (750') (230)

1 TRANSITION LEVEL:
- FL040 when QNH is 1013 hPa (760mm mercury column) or above;
- FL050 when QNH is 977 hPa (733mm mercury column) or above, but less than 1013 hPa (760mm mercury column);
- FL060 when QNH is less than 977 hPa (733mm mercury column).

WARNING
Flights over the city below 2500' / (635) are PROHIBITED.