

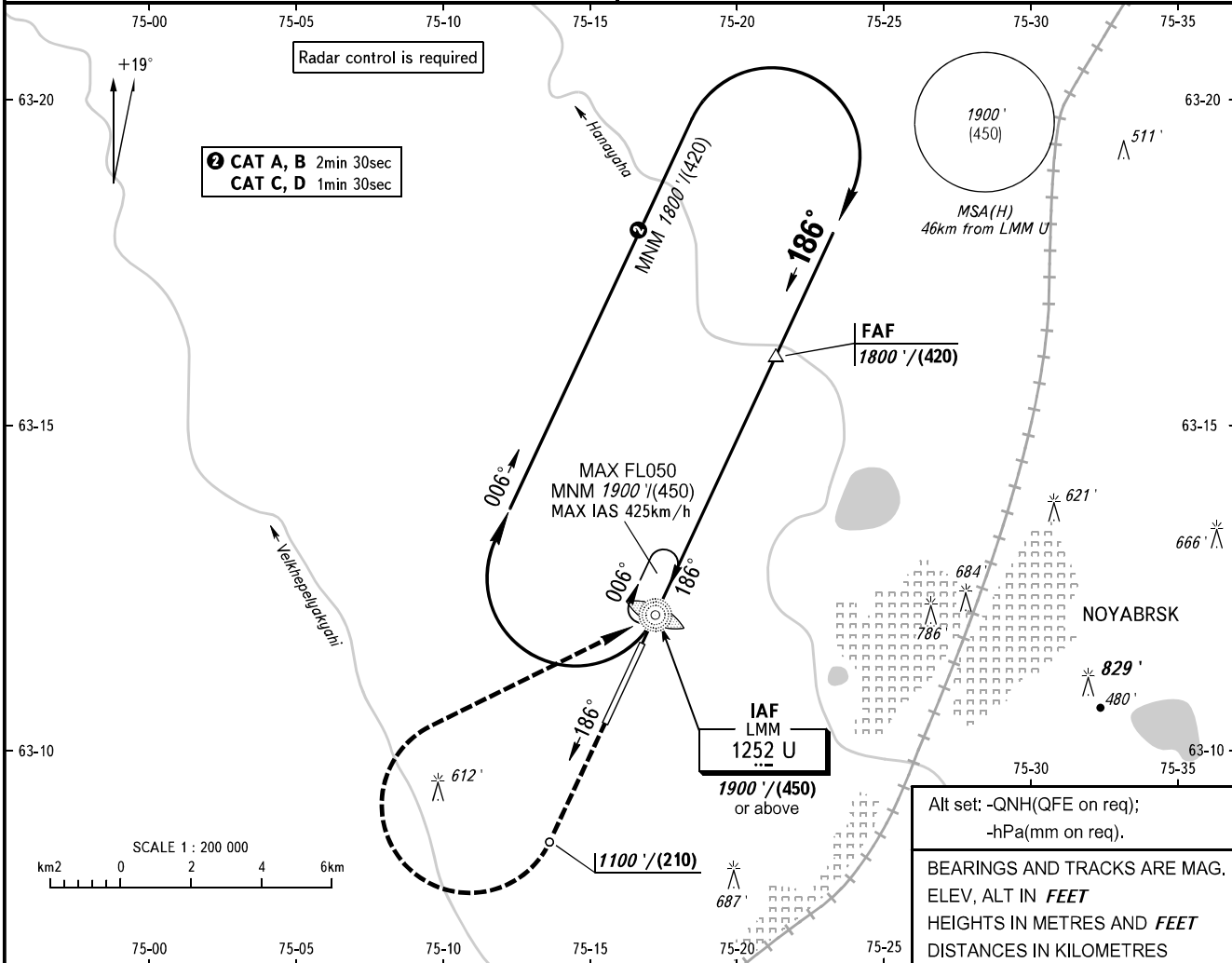
**INSTRUMENT  
APPROACH  
CHART - ICAO**

**NOYABRSK, RUSSIA**  
NOYABRSK  
NDB V RWY 19

TOWER 121.200

TRANSITION LEVEL: **1**  
TRANSITION ALT: 3000'

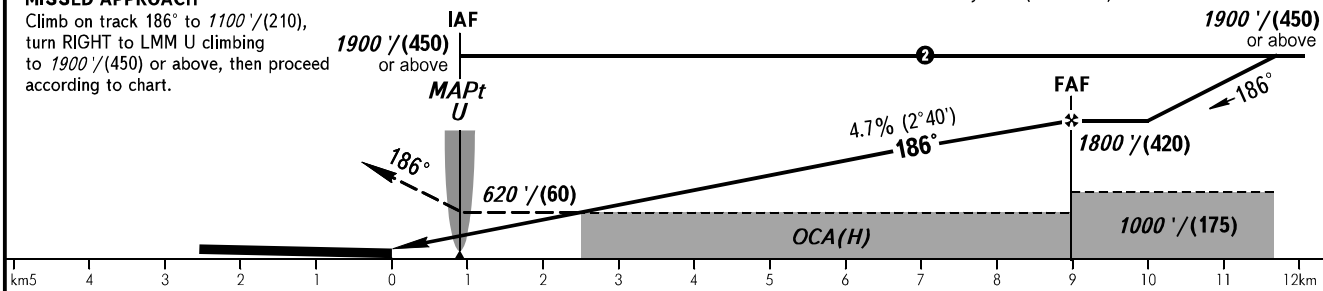
AD ELEV: 447' / 136m  
THR ELEV: 426' / 130.0m



**MISSED APPROACH**

Climb on track 186° to 1100' / (210), turn RIGHT to LMM U climbing to 1900' / (450) or above, then proceed according to chart.

FAF is fixed by TAR (DIST 10.2)



OCA(H)		A	B	C	D
Straight-in Approach		730' (310') (93)	730' (310') (93)	710' (290') (93)	730' (310') (93)
Circling		900' (470') (145)	950' (520') (160)	1090' (660') (203)	1180' (750') (230)

**1** TRANSITION LEVEL:

- FL040 when QNH is 1013 hPa (760mm mercury column) or above;
- FL050 when QNH is 977 hPa (733mm mercury column) or above, but less than 1013 hPa (760mm mercury column);
- FL060 when QNH is less than 977 hPa (733mm mercury column).

**WARNING**

Flights over the city below 2500' / (635) are PROHIBITED.

GROUND SPEED		km/h	150	180	210	240	270	300	330	360	390	420	450
FAF - MAPt 8.1km		min:sec	3:14	2:41	2:18	2:01	1:48	1:37	1:28	1:21	1:14	1:09	1:05
RATE OF DESCENT		m/s	1.9	2.3	2.7	3.1	3.5	3.9	4.3	4.7	5.0	5.4	5.8
		ft/min	374	453	531	610	689	768	846	925	984	1063	1142

CHANGE: New chart