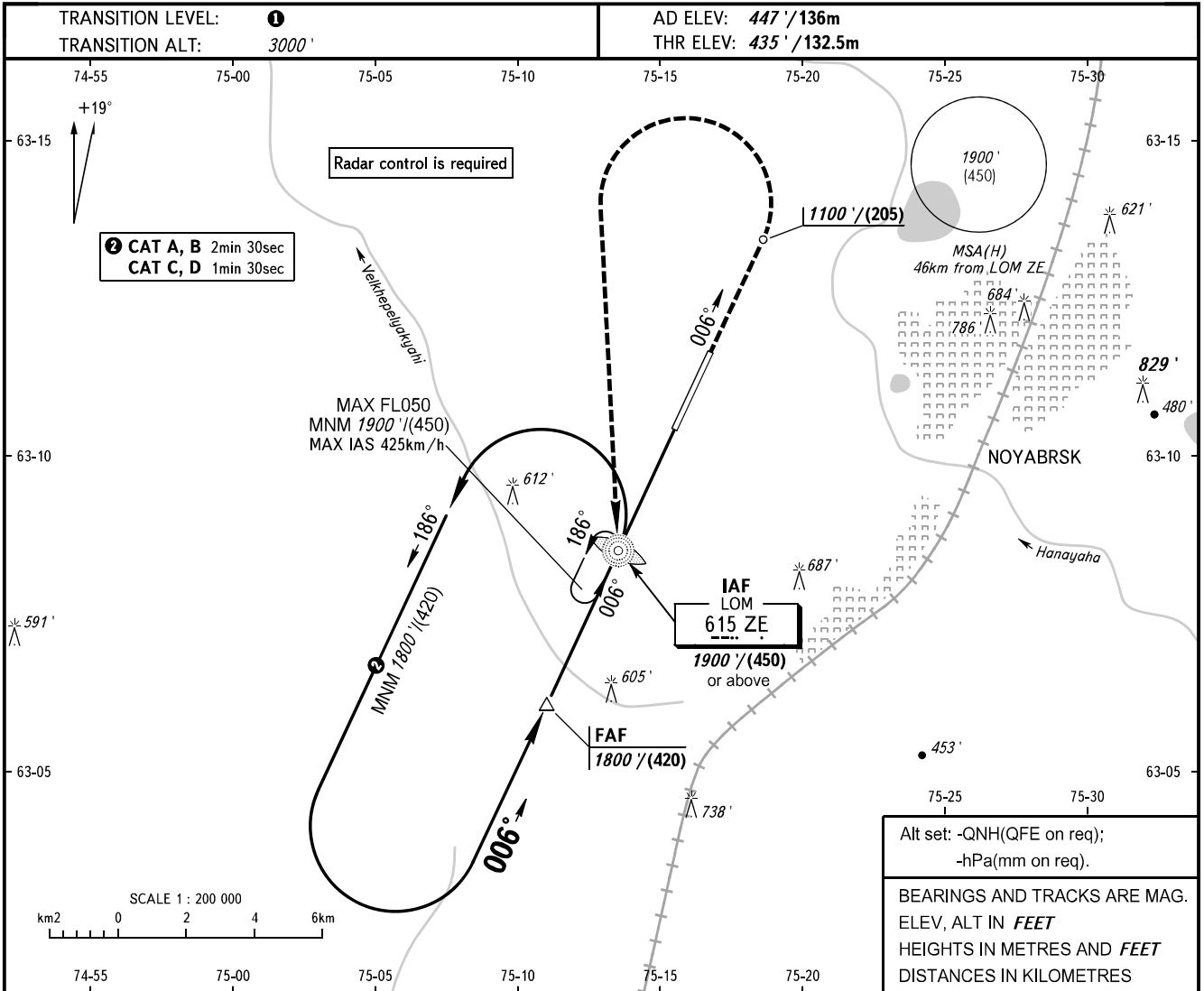


**INSTRUMENT
APPROACH
CHART - ICAO**

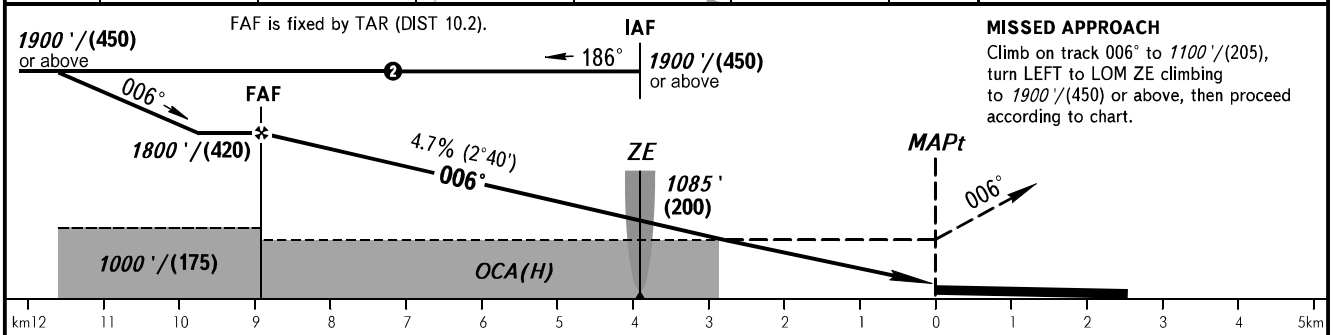
TOWER 121.200

NOYABRSK, RUSSIA
NOYABRSK
NDB Z RWY 01



Alt set: -QNH(QFE on req);
-hPa(mm on req).

BEARINGS AND TRACKS ARE MAG.
ELEV, ALT IN FEET
HEIGHTS IN METRES AND FEET
DISTANCES IN KILOMETRES



FAF is fixed by TAR (DIST 10.2).				
1900'/(450) or above				
1800'/(420)				
4.7% (2°40')				
1085' (200)				
1000'/(175)				
OCA(H)				
A B C D				
840' (410') (124) 840' (410') (124) 840' (410') (124) 840' (410') (124)				
900' (470') (142) 950' (520') (157) 1090' (660') (200) 1180' (750') (228)				

1 TRANSITION LEVEL:
- FL040 when QNH is 1013 hPa (760mm mercury column) or above;
- FL050 when QNH is 977 hPa (733mm mercury column) or above, but less than 1013 hPa (760mm mercury column);
- FL060 when QNH is less than 977 hPa (733mm mercury column).

WARNING
Flights over the city below 2500'/(630) are PROHIBITED.

GROUND SPEED	km/h	150	180	210	240	270	300	330	360	390	420	450
FAF - MAPt 8.9km	min:sec	3:34	2:53	2:28	2:09	1:55	1:44	1:34	1:26	1:20	1:14	1:09
RATE OF DESCENT	m/s	1.9	2.3	2.7	3.1	3.5	3.9	4.3	4.7	5.0	5.4	5.8
	ft/min	374	453	531	610	689	768	846	925	984	1063	1142

CHANGE: New chart