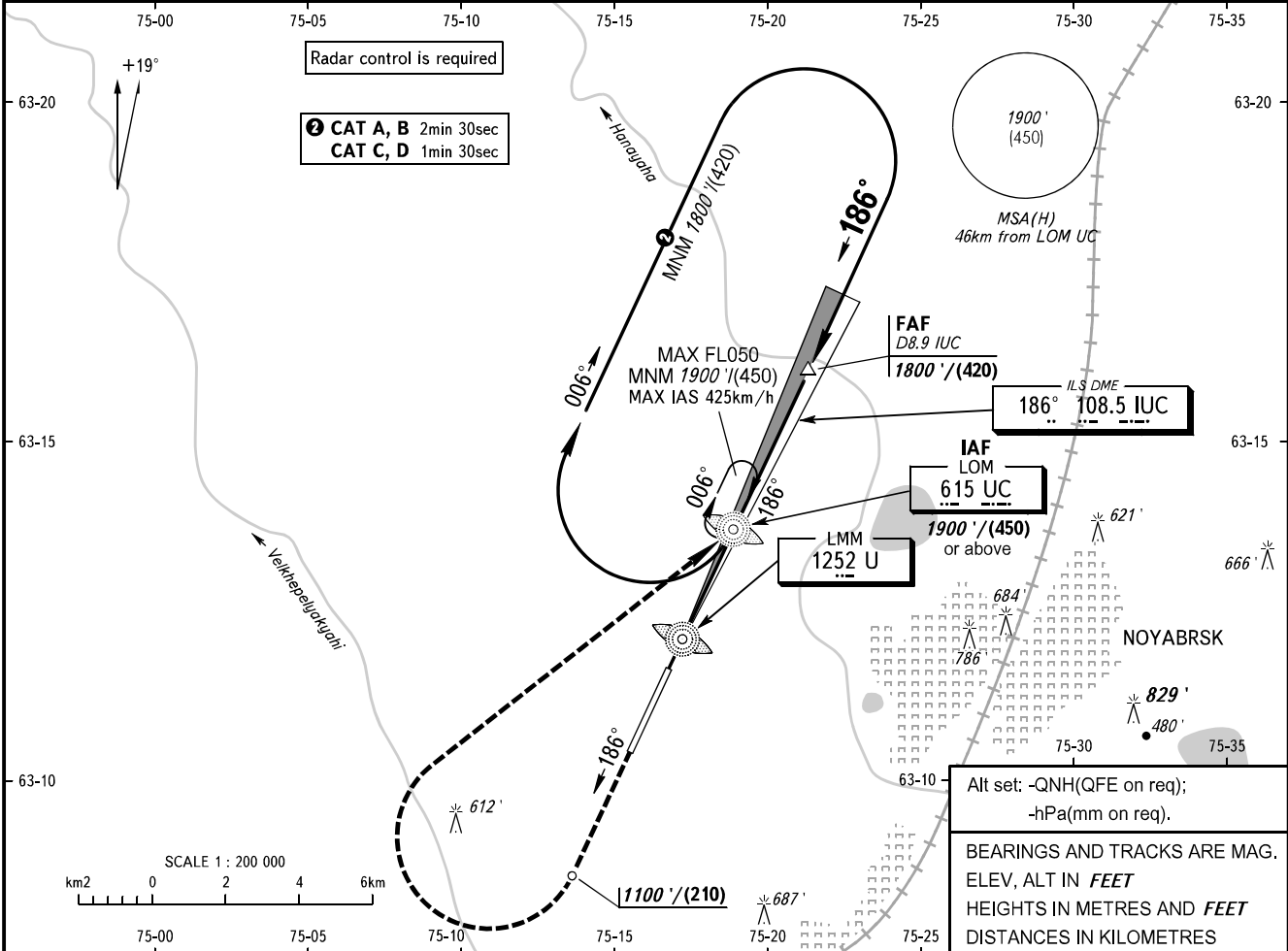


INSTRUMENT
APPROACH
CHART - ICAO

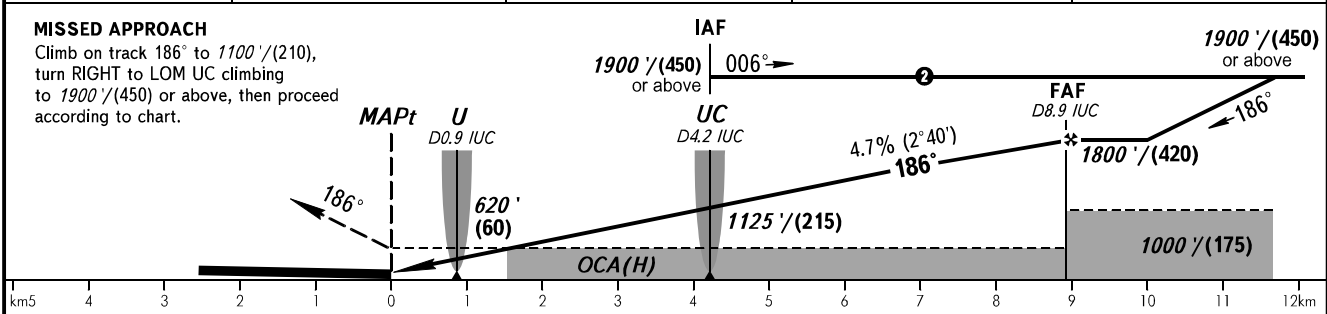
NOYABRSK, RUSSIA
NOYABRSK
LOC Z RWY 19

TOWER 121.200

TRANSITION LEVEL: ①
TRANSITION ALT: 3000'
AD ELEV: 447' / 136m
THR ELEV: 426' / 130.0m



DME IUC	2.0	4.0	6.0	8.0
ALTITUDE/HEIGHT	788' / (115)	1096' / (205)	1404' / (300)	1713' / (395)



OCA(H)		A	B	C	D
Straight-in Approach		720' (290') (90)	720' (290') (90)	720' (290') (90)	720' (290') (90)
	Circling	900' (470') (145)	950' (520') (160)	1090' (660') (203)	1180' (750') (230)

① TRANSITION LEVEL:
- FL040 when QNH is 1013 hPa (760mm mercury column) or above;
- FL050 when QNH is 977 hPa (733mm mercury column) or above,
but less than 1013 hPa (760mm mercury column);
- FL060 when QNH is less than 977 hPa (733mm mercury column).

WARNING:
1. Flights over the city below 2500' (635) are PROHIBITED.
2. DME IUC reads zero at RWY 19 THR.

GROUND SPEED	km/h	150	180	210	240	270	300	330	360	390	420	450
FAF - MAPt 8.9km	min:sec	3:34	2:53	2:28	2:09	1:55	1:44	1:34	1:26	1:20	1:14	1:09
RATE OF DESCENT	m/s	1.9	2.3	2.7	3.1	3.5	3.9	4.3	4.7	5.0	5.4	5.8
	ft/min	374	453	531	610	689	768	846	925	984	1063	1142