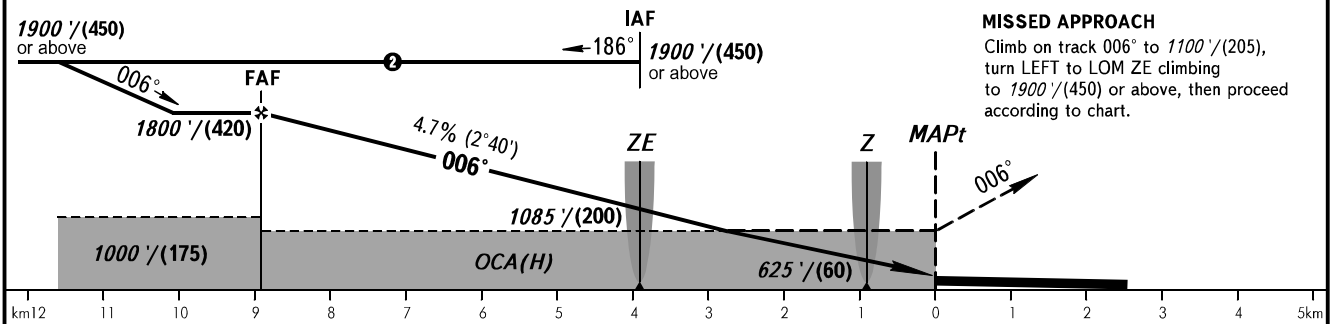
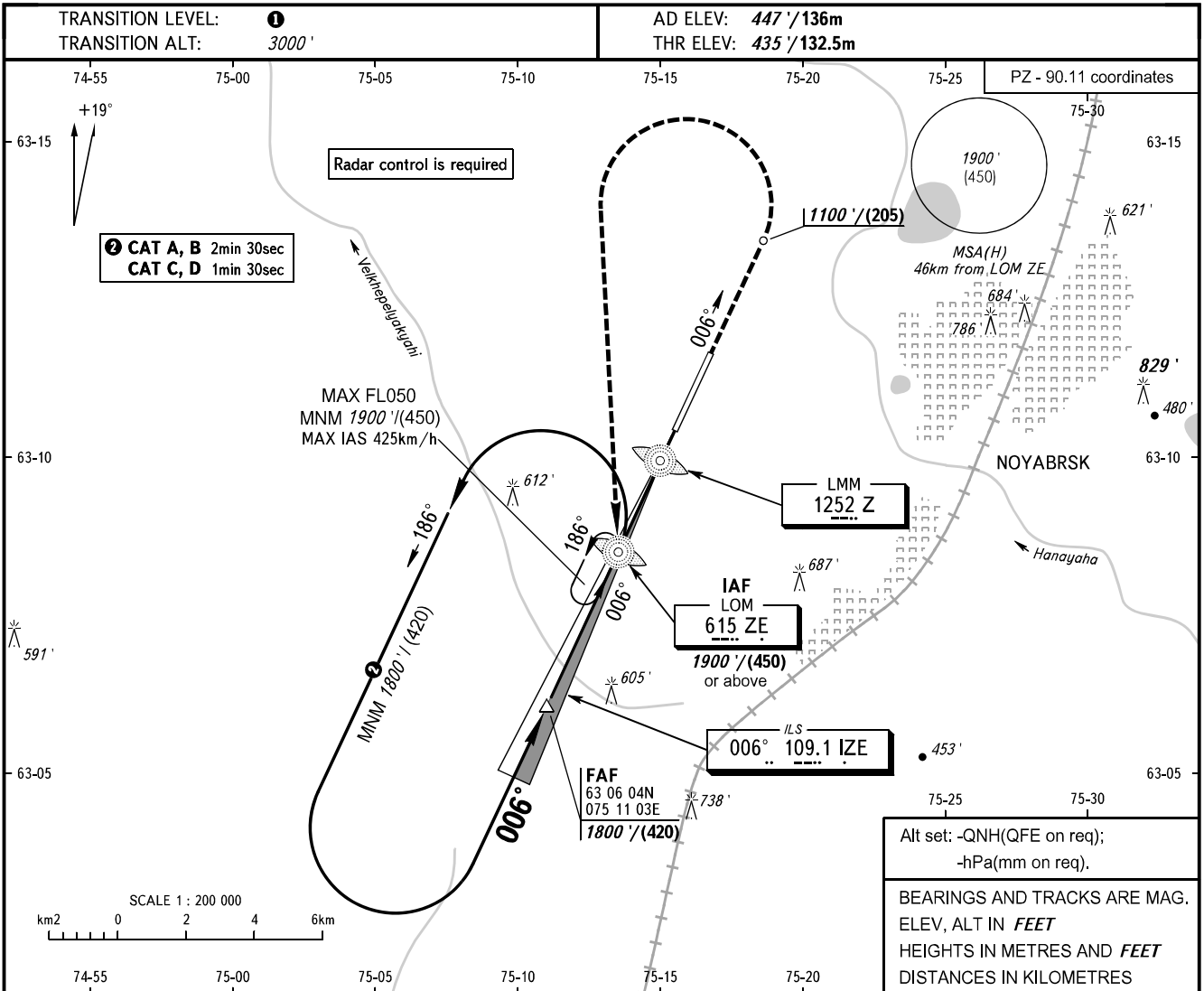


**INSTRUMENT
APPROACH
CHART - ICAO**

TOWER 121.200

NOYABRSK, RUSSIA
NOYABRSK
LOC Z RWY 01



OCA(H)		A	B	C	D													
Straight-in Approach		730' (300') (90)	730' (300') (90)	730' (300') (90)	730' (300') (90)	① TRANSITION LEVEL: - FL040 when QNH is 1013 hPa (760mm mercury column) or above; - FL050 when QNH is 977 hPa (733mm mercury column) or above, but less than 1013 hPa (760mm mercury column); - FL060 when QNH is less than 977 hPa (733mm mercury column). WARNING Flights over the city below 2500' / (630) are PROHIBITED.												
	Circling	900' (470') (142)	950' (520') (157)	1090' (660') (200)	1180' (750') (228)													
GROUND SPEED		km/h		150	180	210	240	270	300	330	360	390	420	450				
FAF - MAPt 8.9km		min:sec		3:34	2:53	2:28	2:09	1:55	1:44	1:34	1:26	1:20	1:14	1:09				
RATE OF DESCENT		m/s		1.9	2.3	2.7	3.1	3.5	3.9	4.3	4.7	5.0	5.4	5.8				
		ft/min		374	453	531	610	689	768	846	925	984	1063	1142				

CHANGE: New chart