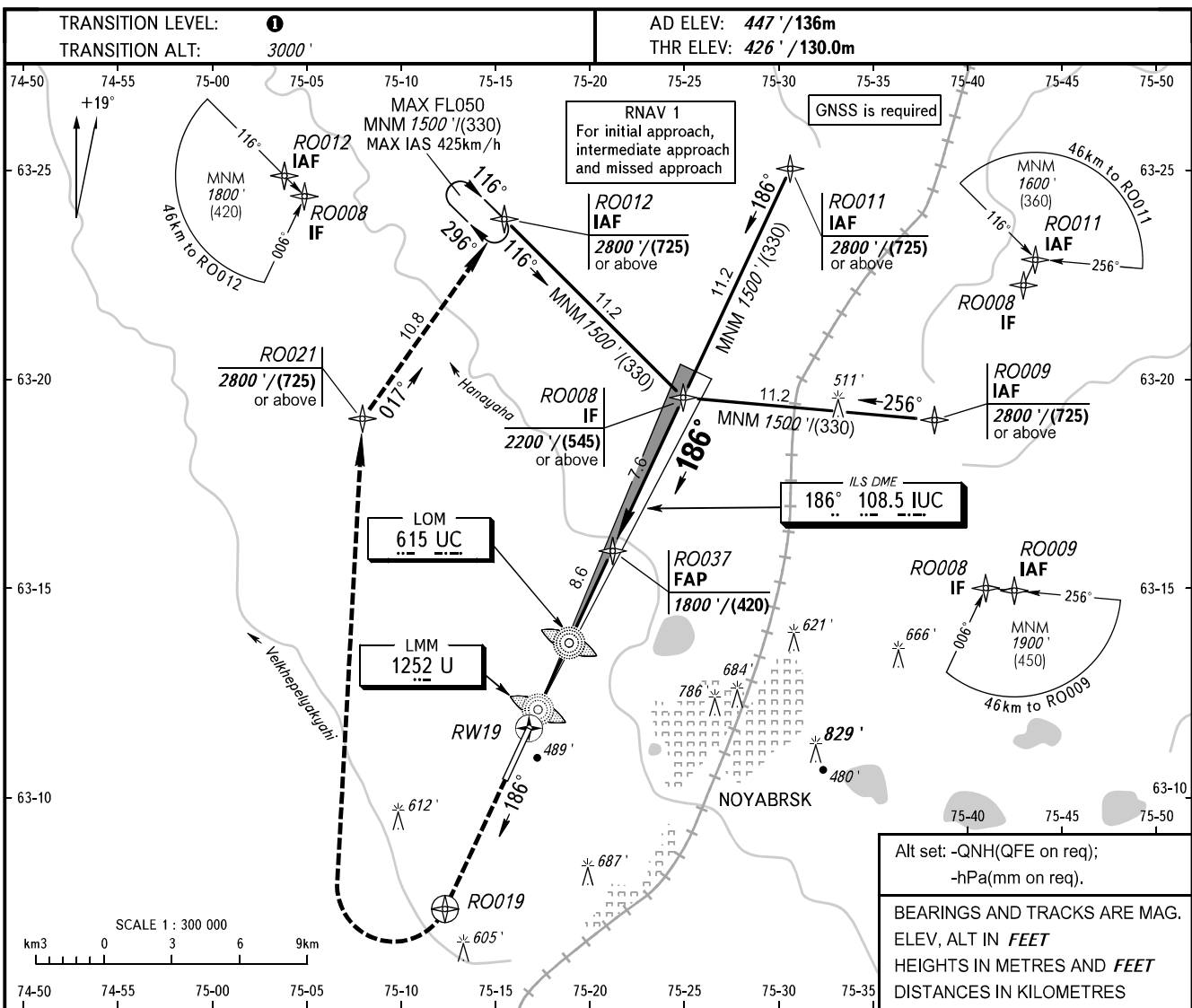


**INSTRUMENT  
APPROACH  
CHART - ICAO**

TOWER **121.200**

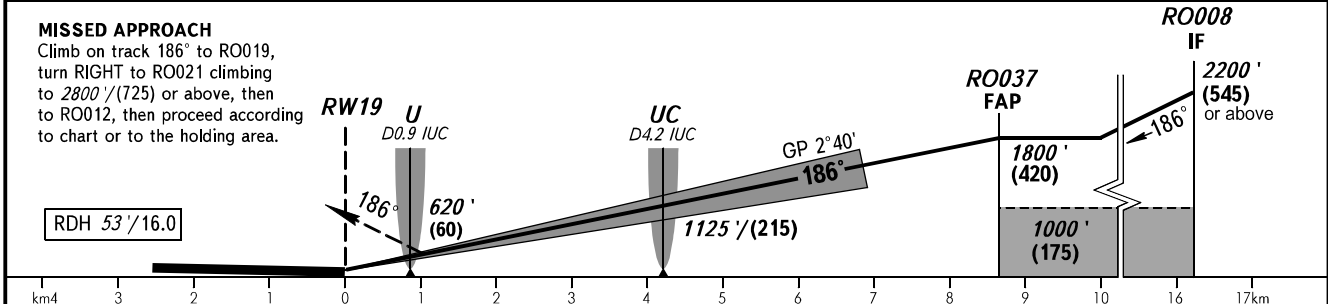
**NOYABRSK, RUSSIA**  
NOYABRSK  
ILS Y CAT I RWY 19



Alt set: -QNH(QFE on req);  
-hPa(mm on req).

BEARINGS AND TRACKS ARE MAG.  
ELEV, ALT IN FEET  
HEIGHTS IN METRES AND FEET  
DISTANCES IN KILOMETRES

DME IUC	2.0	4.0	6.0	8.0
ALTITUDE/HEIGHT	788' / (115)	1096' / (205)	1404' / (300)	1713' / (395)



OCA(H)		A	B	C	D	<p><b>1</b> TRANSITION LEVEL: - FL040 when QNH is 1013 hPa (760mm mercury column) or above; - FL050 when QNH is 977 hPa (733mm mercury column) or above, but less than 1013 hPa (760mm mercury column); - FL060 when QNH is less than 977 hPa (733mm mercury column).</p> <p><b>WARNING:</b> 1. Flights over the city below 2500' / (635) are PROHIBITED. 2. DME IUC reads zero at RWY 19 THR.</p>							
Straight-in Approach	CAT I	601' (174') (54)	611' (184') (57)	621' (194') (60)	631' (204') (63)								
	Circling	900' (470') (145)	950' (520') (160)	1090' (660') (203)	1180' (750') (230)								
GROUND SPEED		km/h	150	180	210	240	270	300	330	360	390	420	450
RATE OF DESCENT		m/s	1.9	2.3	2.7	3.1	3.5	3.9	4.3	4.7	5.0	5.4	5.8
		ft/min	374	453	531	610	689	768	846	925	984	1063	1142