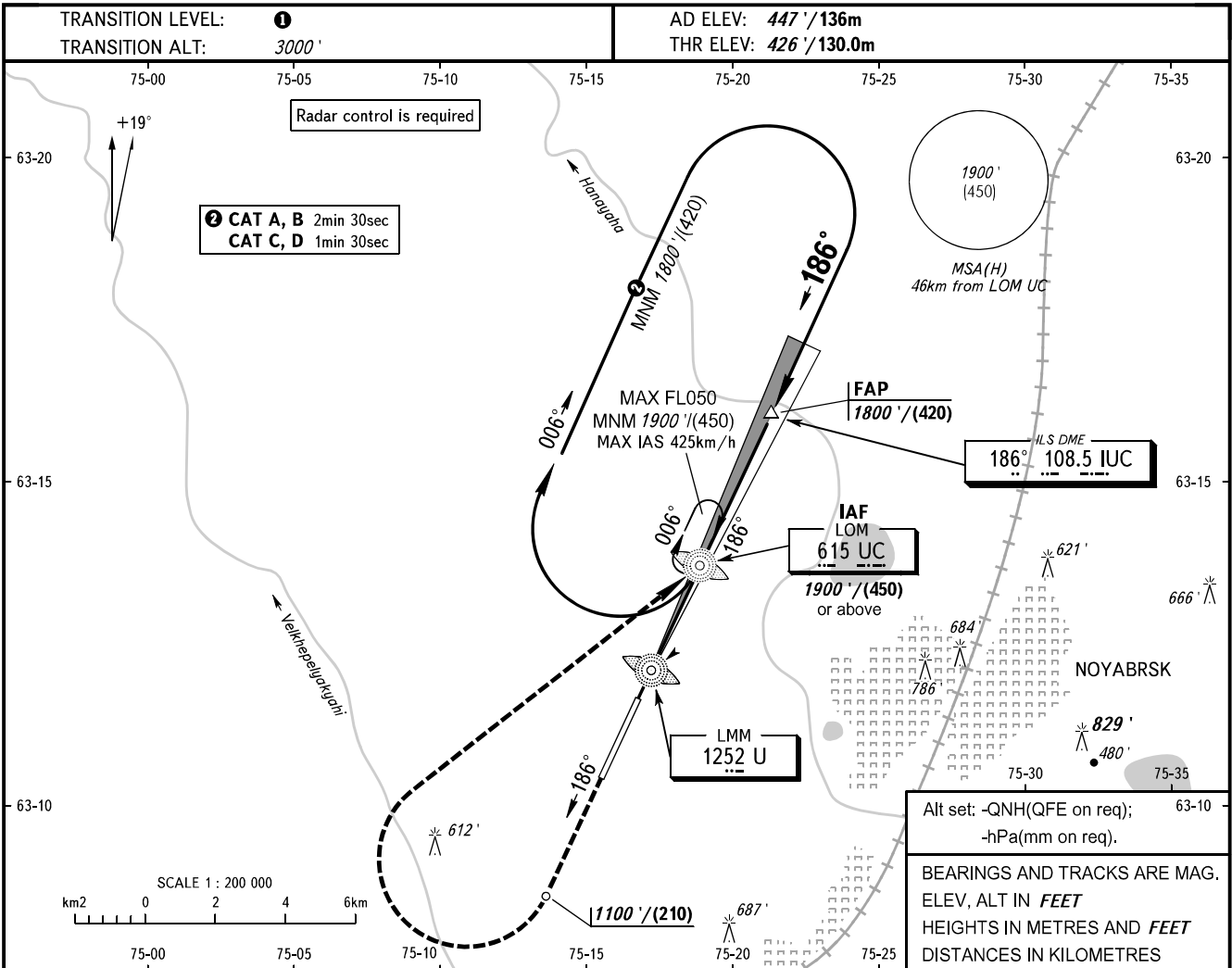


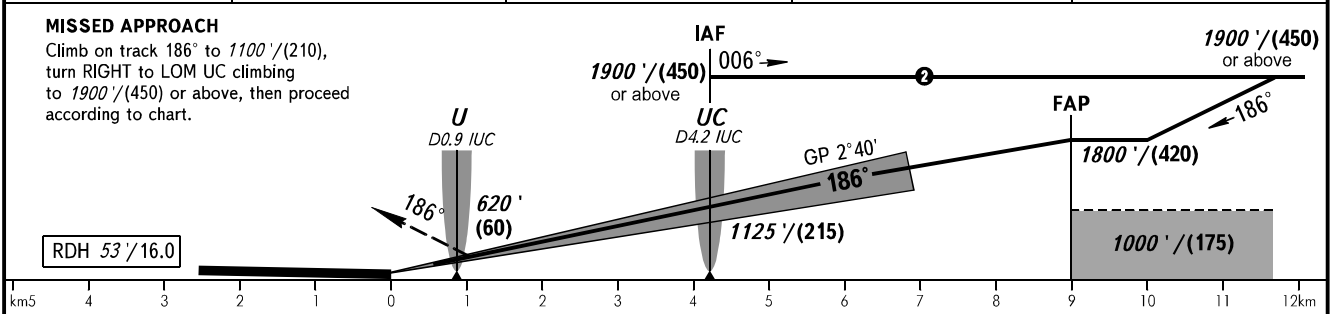
**INSTRUMENT
APPROACH
CHART - ICAO**

TOWER 121.200

NOYABRSK, RUSSIA
NOYABRSK
ILS Z CAT I RWY 19



DME IUC	2.0	4.0	6.0	8.0
ALTITUDE/HEIGHT	788' / (115)	1096' / (205)	1404' / (300)	1713' / (395)



OCA(H)		A	B	C	D
Straight-in Approach	CAT I	601' (174') (54)	611' (184') (57)	621' (194') (60)	631' (204') (63)
Circling		900' (470') (145)	950' (520') (160)	1090' (660') (203)	1180' (750') (230)

1 TRANSITION LEVEL:
- FL040 when QNH is 1013 hPa (760mm mercury column) or above;
- FL050 when QNH is 977 hPa (733mm mercury column) or above, but less than 1013 hPa (760mm mercury column);
- FL060 when QNH is less than 977 hPa (733mm mercury column).

WARNING:
1. Flights over the city below 2500' / (635) are PROHIBITED.
2. DME IUC reads zero at RWY 19 THR.

GROUND SPEED	km/h	150	180	210	240	270	300	330	360	390	420	450
RATE OF DESCENT	m/s	1.9	2.3	2.7	3.1	3.5	3.9	4.3	4.7	5.0	5.4	5.8
	ft/min	374	453	531	610	689	768	846	925	984	1063	1142