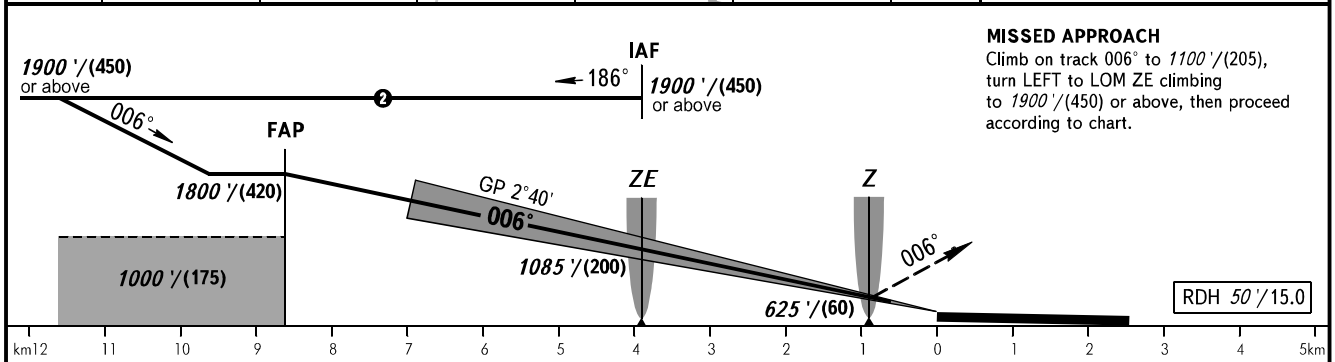
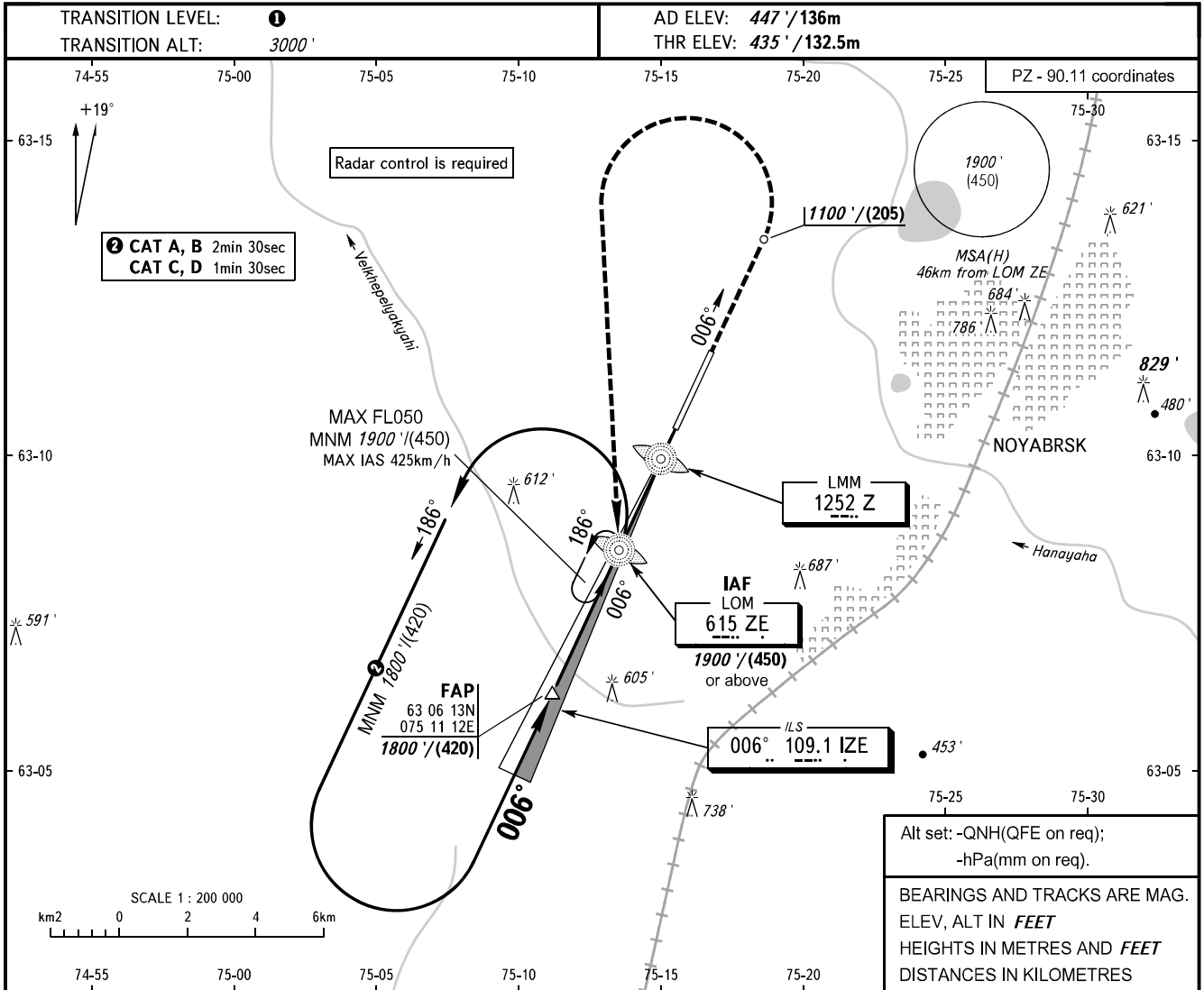


**INSTRUMENT
APPROACH
CHART - ICAO**

TOWER **121.200**

NOYABRSK, RUSSIA
NOYABRSK
ILS Z CAT I RWY 01



MISSED APPROACH
Climb on track 006° to 1100' / (205), turn LEFT to LOM ZE climbing to 1900' / (450) or above, then proceed according to chart.

OCA(H)		A	B	C	D
Straight-in Approach	CAT I	612' (177') (54)	622' (187') (57)	632' (197') (61)	642' (207') (64)
	Circling	900' (470') (142)	950' (520') (157)	1090' (660') (200)	1180' (750') (228)

① TRANSITION LEVEL:
- FL040 when QNH is 1013 hPa (760mm mercury column) or above;
- FL050 when QNH is 977 hPa (733mm mercury column) or above, but less than 1013 hPa (760mm mercury column);
- FL060 when QNH is less than 977 hPa (733mm mercury column).

WARNING
Flights over the city below 2500' / (630) are PROHIBITED.

GROUND SPEED	km/h	150	180	210	240	270	300	330	360	390	420	450
RATE OF DESCENT	m/s	1.9	2.3	2.7	3.1	3.5	3.9	4.3	4.7	5.0	5.4	5.8
	ft/min	374	453	531	610	689	768	846	925	984	1063	1142

CHANGE: New chart