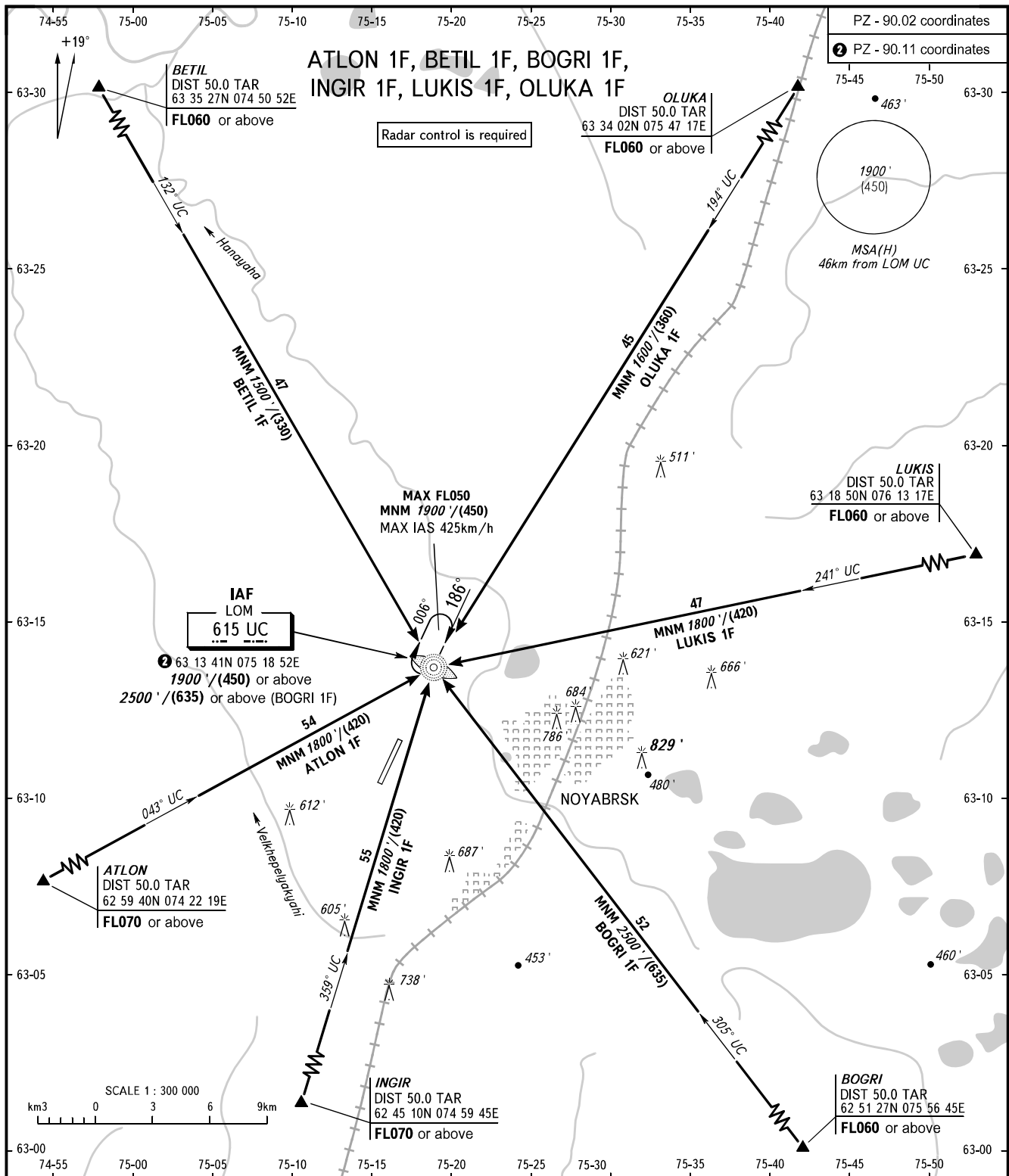


STANDARD ARRIVAL CHART  
INSTRUMENT (STAR) - ICAO

NOYABRSK, RUSSIA  
NOYABRSK  
RWY 19

TRANSITION  
LEVEL : **1**



<p>BEARINGS AND TRACKS ARE MAGNETIC ALTITUDES AND ELEVATIONS IN FEET HEIGHTS IN METRES DISTANCES IN KILOMETRES</p>	<p>Alt set: -QNH(QFE on req); -hPa(mm on req).</p>	<p><b>1</b> TRANSITION LEVEL: - FL040 when QNH is 1013 hPa (760mm mercury column) or above; - FL050 when QNH is 977 hPa (733mm mercury column) or above, but less than 1013 hPa (760mm mercury column); - FL060 when QNH is less than 977 hPa (733mm mercury column).</p> <p><b>WARNING</b> Flights over the city below 2500'/(635) are PROHIBITED.</p>
--	--	---