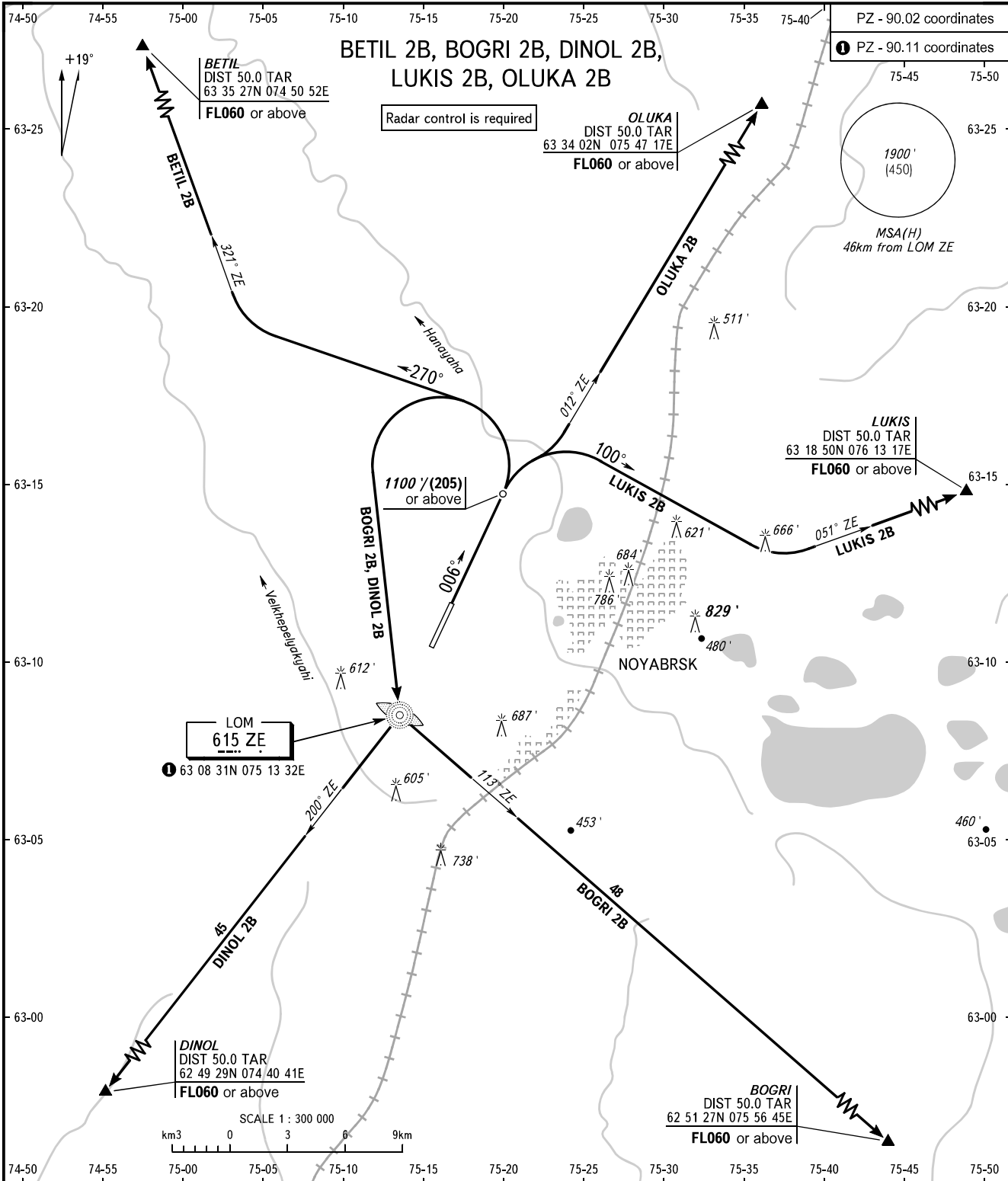


STANDARD DEPARTURE CHART  
INSTRUMENT (SID) - ICAO

NOYABRSK, RUSSIA  
NOYABRSK  
RWY 01

TRANSITION  
ALTITUDE: 3000'



Radar control is required

**WARNING:**  
1. Flights over the city below 2500' (630) are PROHIBITED.  
2. The minimum climb gradient required due to the airspace structure is 3.5% for SID OLUKA 2B.

TOWER 121.200

BEARINGS AND TRACKS ARE MAGNETIC  
ALTITUDES AND ELEVATIONS IN FEET  
HEIGHTS IN METRES  
DISTANCES IN KILOMETRES

Alt set: -QNH(QFE on req);  
-hPa(mm on req).

CHANGE: New chart