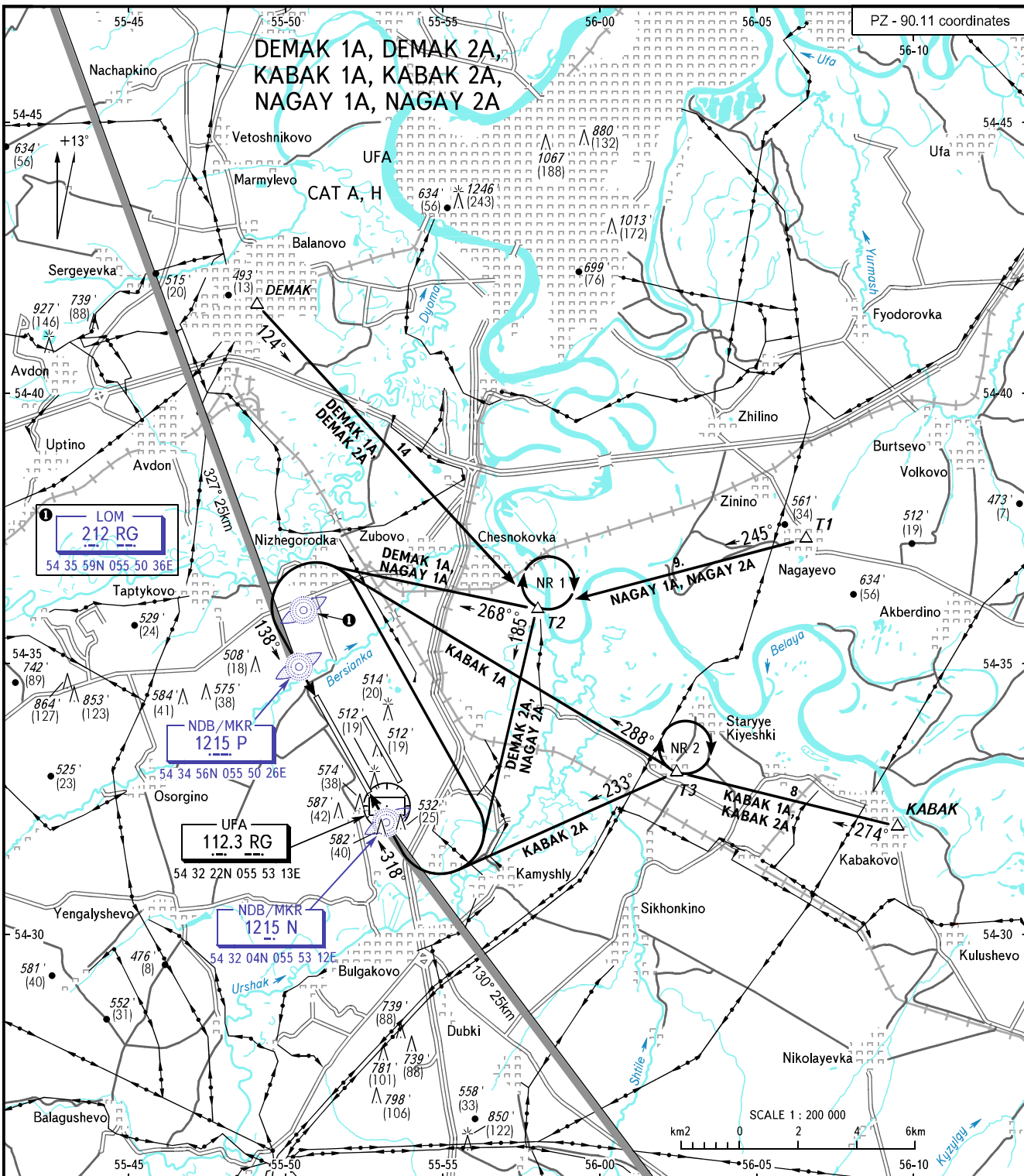


VFR
ARRIVAL
CHART

UFA, RUSSIA
UFA
RWY 14R/32L

TRANSITION
LEVEL : FL070



UFA TOWER 131.000

- WARNING:**
1. Flying birds can be expected in take-off, landing areas and on final approach segment.
 2. Turn over RWY is PROHIBITED.
 3. Holding NR 1, NR 2 by ATC.

BEARINGS AND TRACKS ARE MAGNETIC
ALTITUDES AND ELEVATIONS IN FEET
HEIGHTS IN METRES
DISTANCES IN KILOMETRES

Alt set: -QNH(QFE on req);
-hPa(mm on req).

CHANGE: NDB/MKR