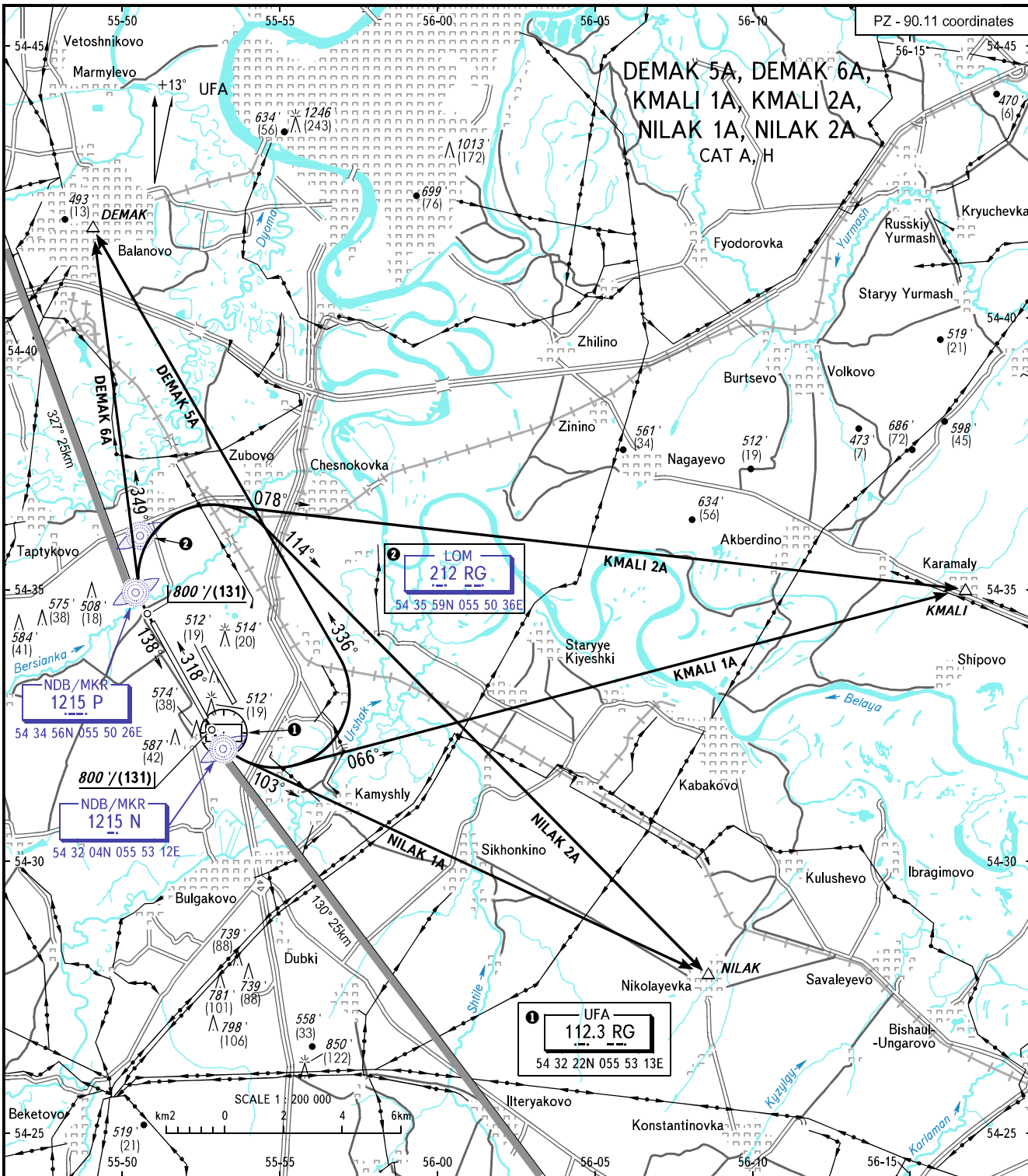


VFR
DEPARTURE
CHART

UFA, RUSSIA
UFA
RWY 14R/32L

TRANSITION ALT: 5000'
TRANSITION HGT: (1410)



UFA TOWER 131.000

WARNING:

1. Flying birds can be expected in take-off, landing areas and on final approach segment.
2. Turn over RWY, TWY, Apron is PROHIBITED.

BEARINGS AND TRACKS ARE MAGNETIC
ALTITUDES AND ELEVATIONS IN FEET
HEIGHTS IN METRES
DISTANCES IN KILOMETRES

Alt set: -QNH(QFE on req);
-hPa(mm on req).

CHANGE: NDB/MKR