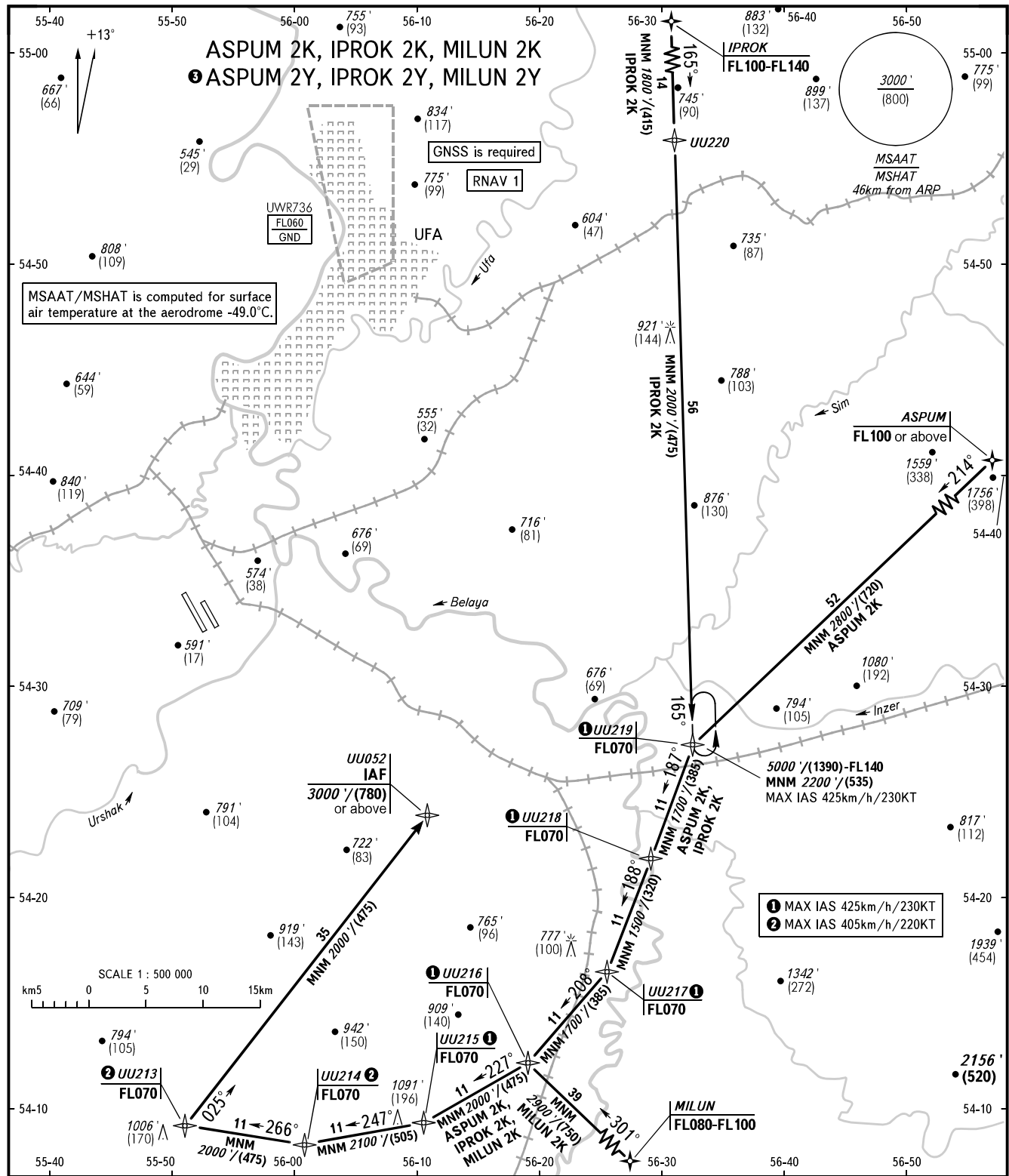


STANDARD ARRIVAL CHART
INSTRUMENT (STAR) - ICAO

TRANSITION
LEVEL : FL070

UFA, RUSSIA
UFA
RNAV RWY 32L



<p>APPROACH RADAR 126.000 120.900</p>	<p>WARNING Flying birds can be expected in take-off, landing areas and on final approach segment.</p>	<p>3 STAR are only designated for calculation of fuel to destination:</p> <p>ASPUM 2Y ASPUM [FL080+] - UU219 [FL070] - UU052 [3000'+/(780)+]</p> <p>IPROK 2Y IPROK [FL140+] - UU220 - UU219 [FL070] - UU052 [3000'+/(780)+]</p> <p>MILUN 2Y MILUN [FL110+] - UU216 [FL070] - UU052 [3000'+/(780)+]</p>
<p>BEARINGS AND TRACKS ARE MAGNETIC ALTITUDES IN FEET ELEVATIONS IN FEET AND METRES HEIGHTS IN METRES DISTANCES IN KILOMETRES</p>	<p>Alt set: - QNH (QFE on req); - hPa (mm on req).</p>	