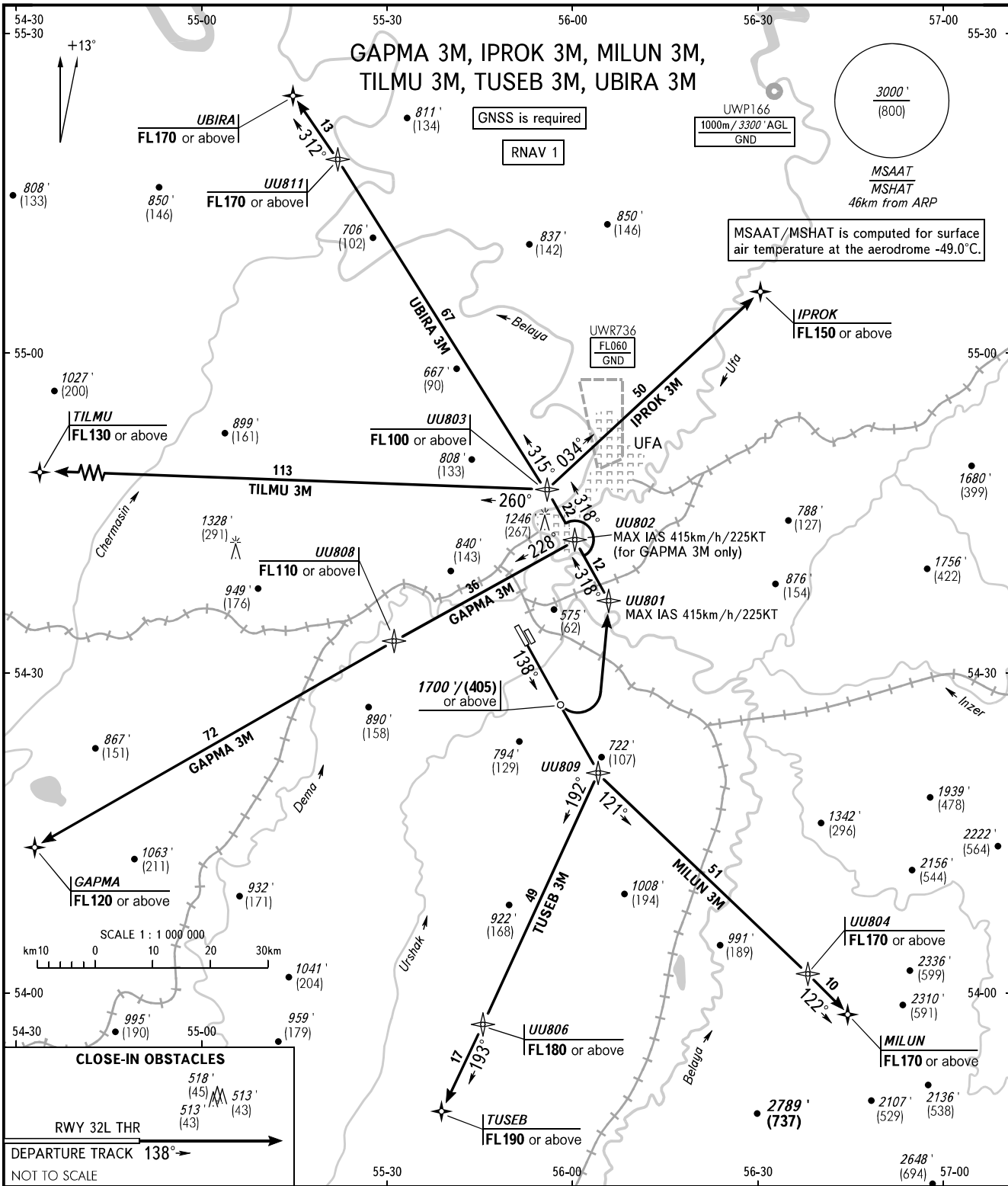


STANDARD DEPARTURE CHART
INSTRUMENT (SID) - ICAO

TRANSITION ALTITUDE : 5000'
TRANSITION HEIGHT : (1410)

UFA, RUSSIA
UFA
RNAV RWY 14R



<p>ADDITIONAL INFORMATION</p> <p>BEARINGS AND TRACKS ARE MAGNETIC ALTITUDES IN FEET ELEVATIONS IN FEET AND METRES HEIGHTS IN METRES DISTANCES IN KILOMETRES</p>	<p>ADDITIONAL INFORMATION</p> <p>Alt set: - QNH (QFE on req); - hPa (mm on req).</p>	<p>WARNING:</p> <ol style="list-style-type: none"> 1. Turn before DER is PROHIBITED. 2. Flying birds can be expected in take-off, landing areas and on final approach segment. 	<p>The minimum climb gradients due to the airspace structure:</p> <ul style="list-style-type: none"> - 5.1% up to FL100 for IPROK 3M; - 6.7% up to FL170 for MILUN 3M; - 5.1% up to FL100 for TILMU 3M; - 7.3% up to FL180 for TUSEB 3M; - 5.1% up to FL100 for UBIRA 3M.
--	---	---	--