

**INSTRUMENT
APPROACH
CHART - ICAO**

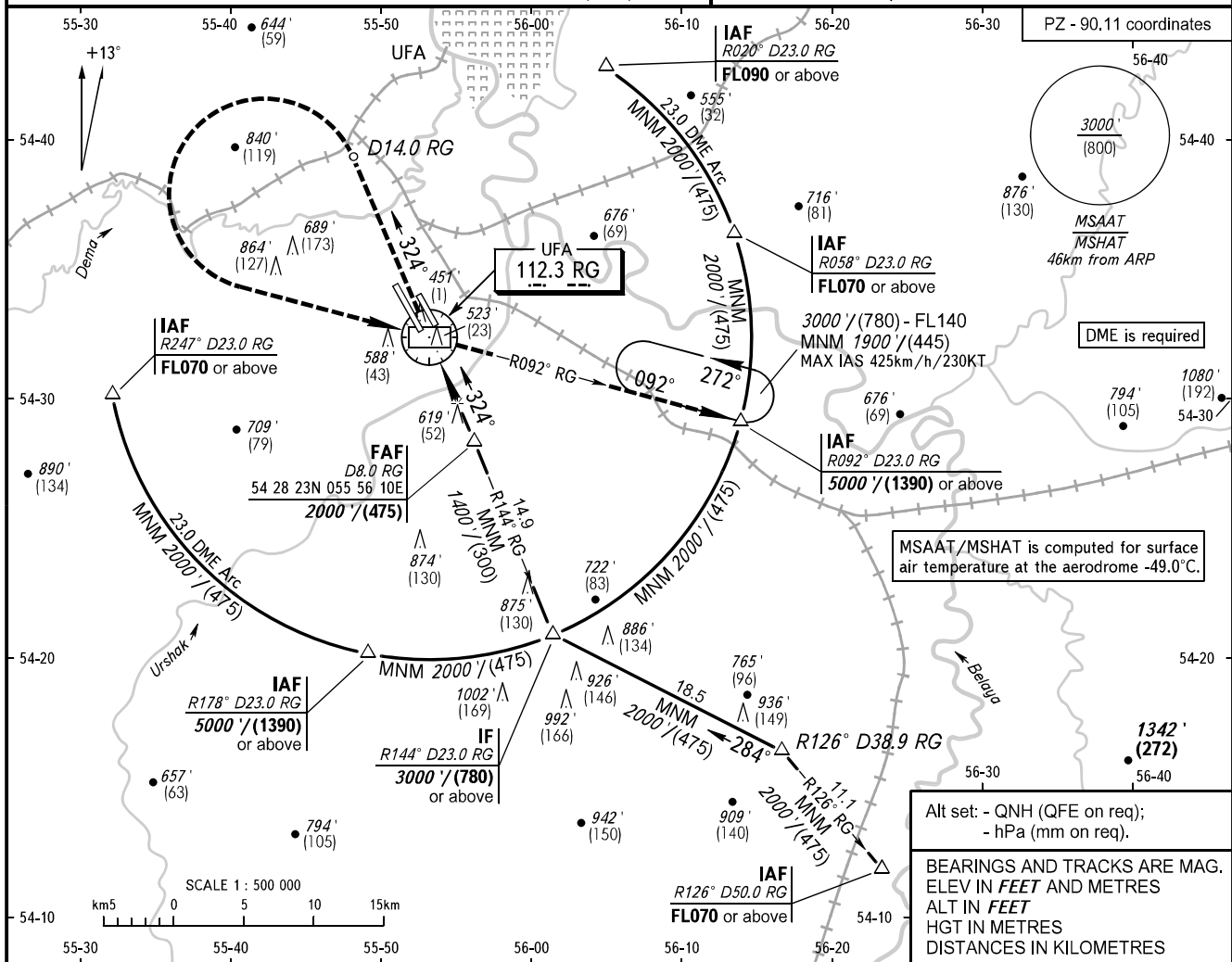
RADAR 120.900

UFA, RUSSIA
UFA
VOR RWY 32L

TRANSITION LEVEL: FL070

TRANSITION ALTITUDE : 5000'
TRANSITION HEIGHT : (1410)

AD ELEV: 450' / 137m
THR ELEV: 450' / 137.0m



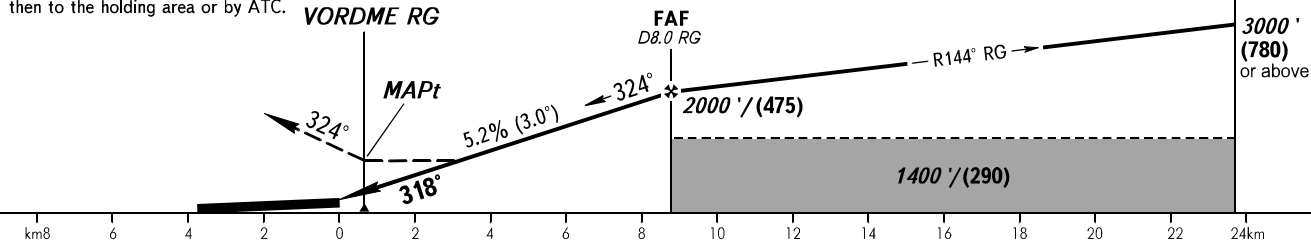
MISSED APPROACH

Climb straight ahead to D14.0 RG, turn LEFT to VORDME RG, then proceed on R092° RG to D23.0 RG, then to the holding area or by ATC.

VORDME RG

FAF
D8.0 RG

IF
D23.0 RG



OCA(H)	A	B	C	D
Straight-in Approach	1270' (820') (250)	1270' (820') (250)	1270' (820') (250)	1270' (820') (250)
Circling	1270' (820') (250)	1270' (820') (250)	1270' (820') (250)	1270' (820') (250)

WARNING:

1. Flying birds can be expected in take-off, landing areas and on final approach segment.
2. Final approach segment is offset by 6° from RCL.
3. MAPt at VORDME RG.
Timing not authorized for defining MAPt.

GROUND SPEED	km/h	150	180	210	240	270	300	330	360	390
	kt	81	97	113	130	146	162	178	194	211
RATE OF DESCENT	m/s	2.2	2.6	3.0	3.5	3.9	4.3	4.8	5.2	5.6
	ft/min	427	512	597	682	768	853	938	1024	1109