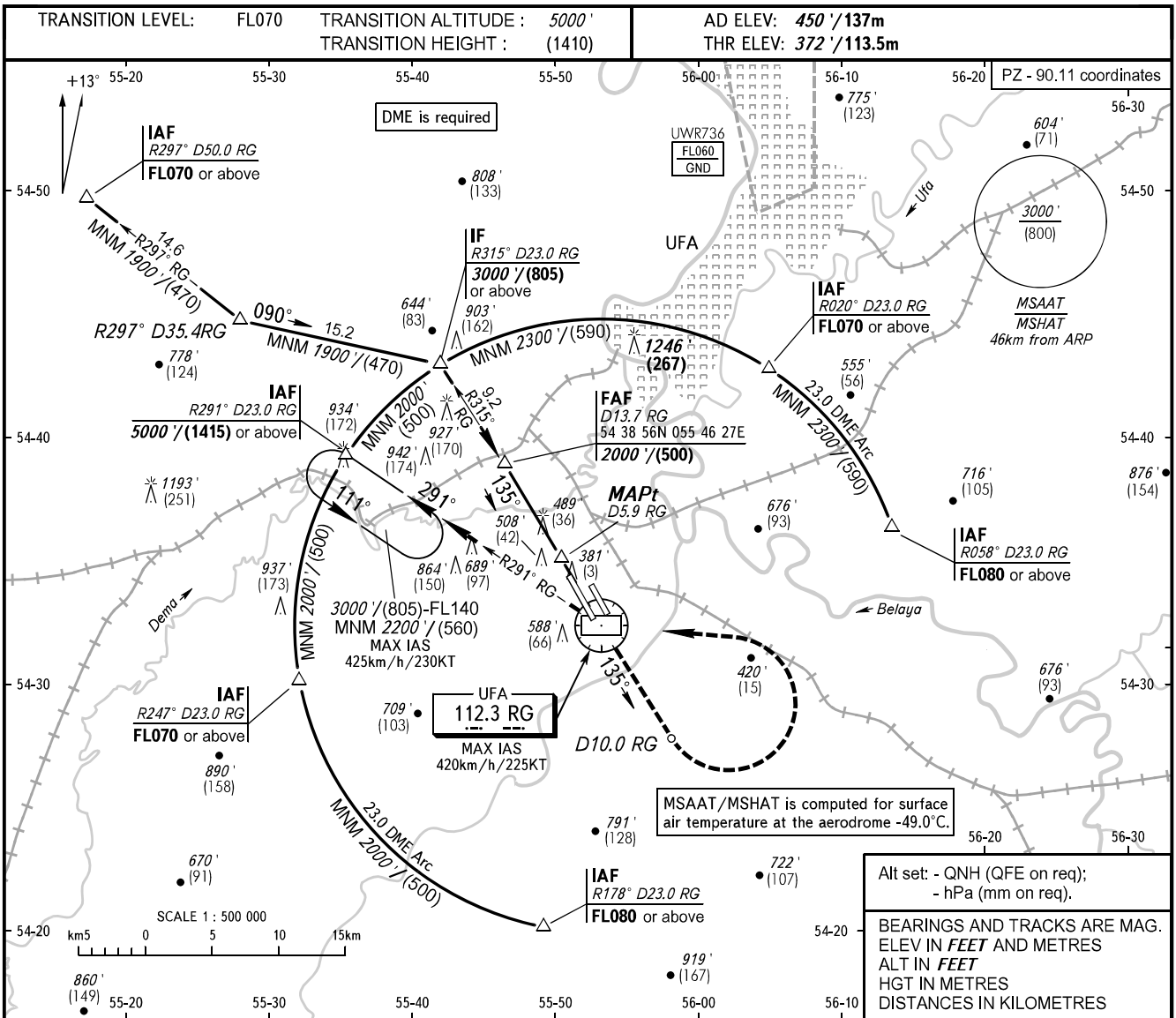


**INSTRUMENT
APPROACH
CHART - ICAO**

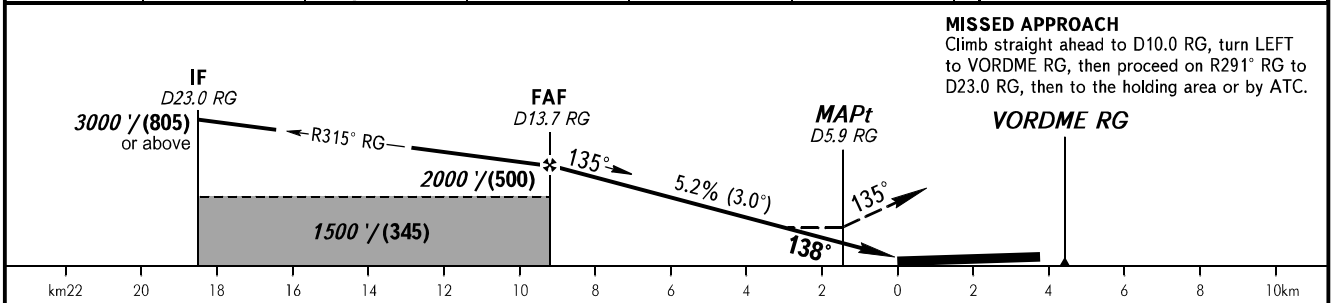
RADAR **120.900**

UFA, RUSSIA
UFA
VOR RWY 14R



Alt set: - QNH (QFE on req);
- hPa (mm on req).

BEARINGS AND TRACKS ARE MAG.
ELEV IN FEET AND METRES
ALT IN FEET
HGT IN METRES
DISTANCES IN KILOMETRES



MISSED APPROACH
Climb straight ahead to D10.0 RG, turn LEFT to VORDME RG, then proceed on R291° RG to D23.0 RG, then to the holding area or by ATC.

OCA(H)		A	B	C	D						
Straight-in Approach		760' (390') (120)	760' (390') (120)	760' (390') (120)	760' (390') (120)						
Circling		890' (440') (135)	950' (500') (155)	1090' (640') (195)	1260' (810') (250)						
GROUND SPEED	km/h		150	180	210	240	270	300	330	360	390
	kt		81	97	113	130	146	162	178	194	211
RATE OF DESCENT	m/s		2.2	2.6	3.0	3.5	3.9	4.3	4.8	5.2	5.6
	ft/min		427	512	597	682	768	853	938	1024	1109

WARNING:

- Flying birds can be expected in take-off, landing areas and on final approach segment.
- Final approach segment is offset by 3° from RCL.
- FAF - MAPt 7.8km.
Timing not authorized for defining MAPt.

CHANGE: UW736