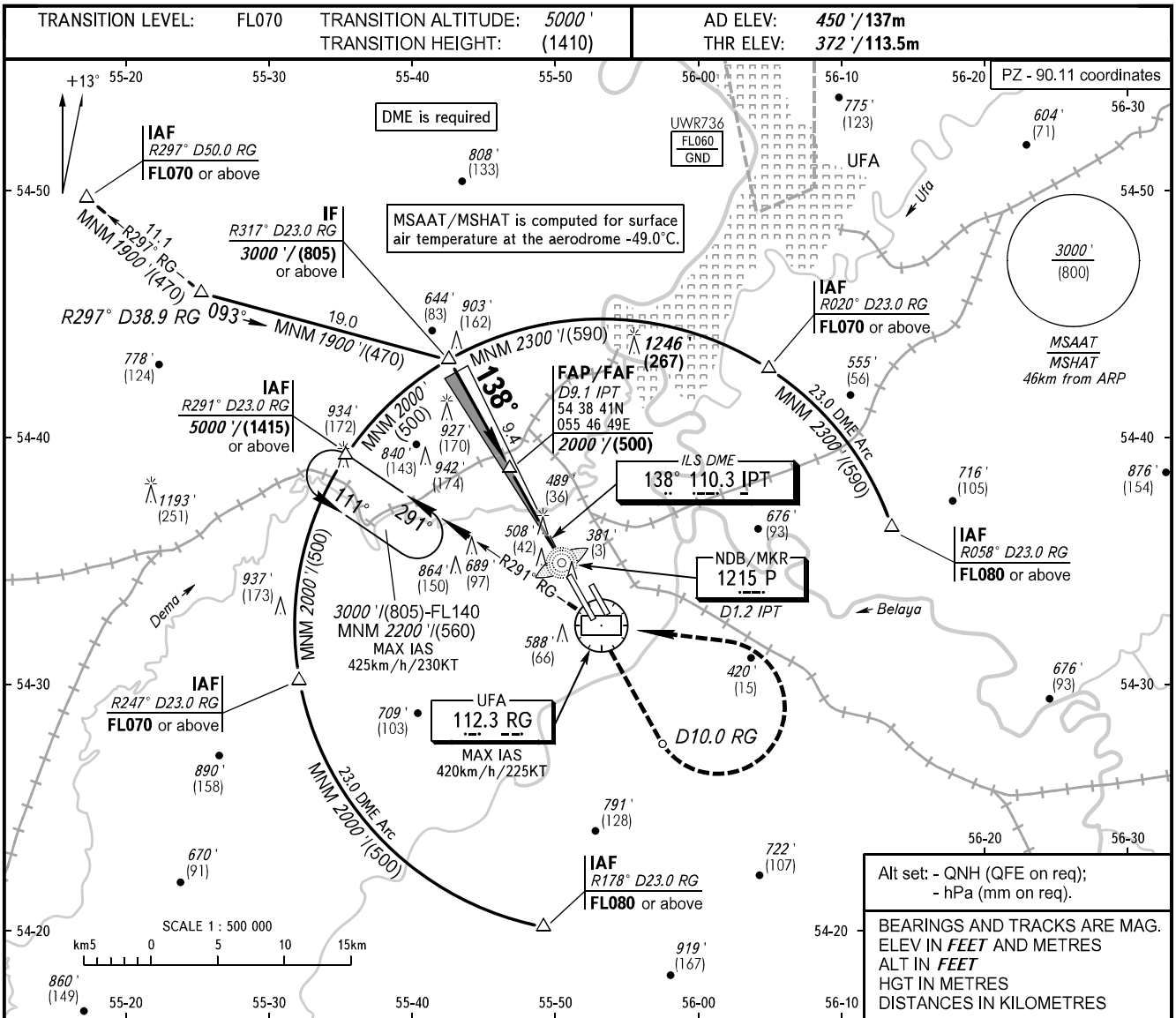


**INSTRUMENT  
APPROACH  
CHART - ICAO**

RADAR **120.900**

**UFA, RUSSIA**  
UFA  
ILS Y CAT I/II, LOC Y RWY 14R

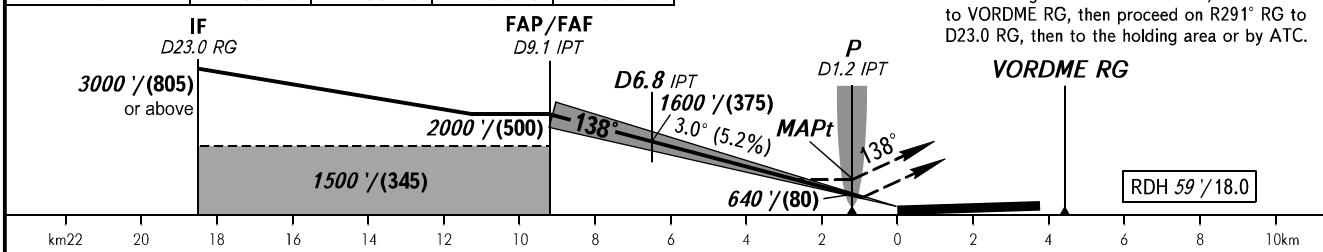


Alt set: - QNH (QFE on req);  
- hPa (mm on req).

BEARINGS AND TRACKS ARE MAG.  
ELEV IN FEET AND METRES  
ALT IN FEET  
HGT IN METRES  
DISTANCES IN KILOMETRES

DME IPT	8.0	6.0	4.0	2.0
ALTITUDE/HEIGHT	1810' / (440)	1470' / (335)	1120' / (230)	780' / (125)

**MISSED APPROACH**  
Climb straight ahead to D10.0 RG, turn LEFT to VORDME RG, then proceed on R291° RG to D23.0 RG, then to the holding area or by ATC.



OCA(H)		A	B	C	D
Straight-in Approach	CAT I	563' (191') (59)	576' (204') (63)	584' (212') (65)	594' (222') (68)
	CAT II	475' (103') (32)	493' (121') (37)	504' (132') (41)	519' (147') (45)
	LOC	740' (368') (113)	740' (368') (113)	740' (368') (113)	740' (368') (113)
Circling		890' (440') (135)	950' (500') (155)	1090' (640') (195)	1260' (810') (250)

**WARNING:**

- Flying birds can be expected in take-off, landing areas and on final approach segment.
- ILS DME IPT reads zero at RWY 14R THR.
- MAPt at NDB/MKR P. Timing not authorized for defining MAPt.

GROUND SPEED	km/h	150	180	210	240	270	300	330	360	390
	kt	81	97	113	130	146	162	178	194	211
RATE OF DESCENT	m/s	2.2	2.6	3.0	3.5	3.9	4.3	4.8	5.2	5.6
	ft/min	427	512	597	682	768	853	938	1024	1109

CHANGE: UW736