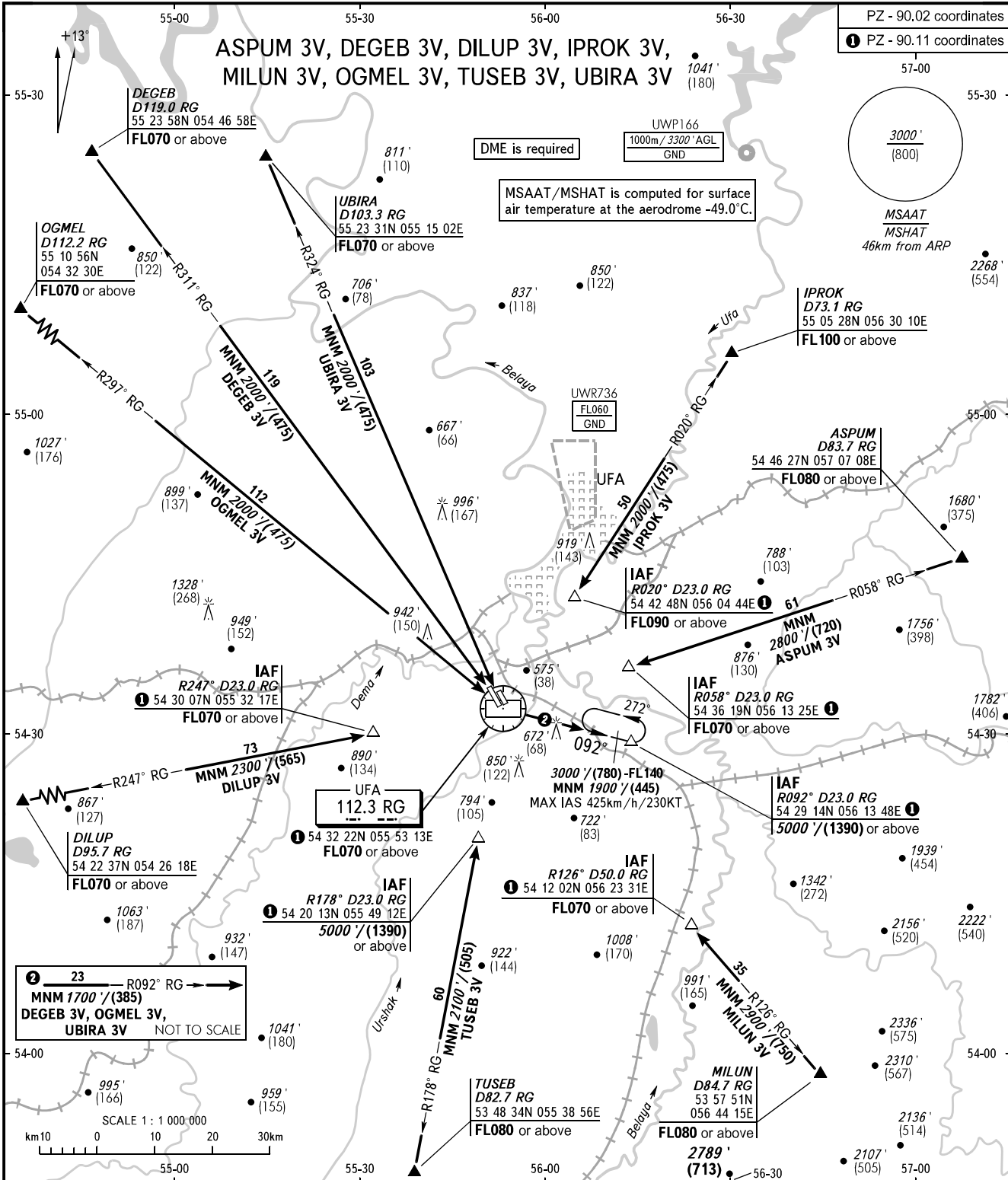


STANDARD ARRIVAL CHART INSTRUMENT (STAR) - ICAO

TRANSITION
LEVEL: **FL070**

PZ - 90.02 coordinates
1 PZ - 90.11 coordinates



APPROACH RADAR **126.000**
120.900

WARNING
Flying birds can be expected in take-off, landing areas and on final approach segment.

BEARINGS AND TRACKS ARE MAGNETIC
ALTITUDES IN FEET
ELEVATIONS IN FEET AND METRES
HEIGHTS IN METRES
DISTANCES IN KILOMETRES

Alt set: - QNH (QFE on req);
- hPa (mm on req).