

STANDARD DEPARTURE CHART  
INSTRUMENT (SID) - ICAO

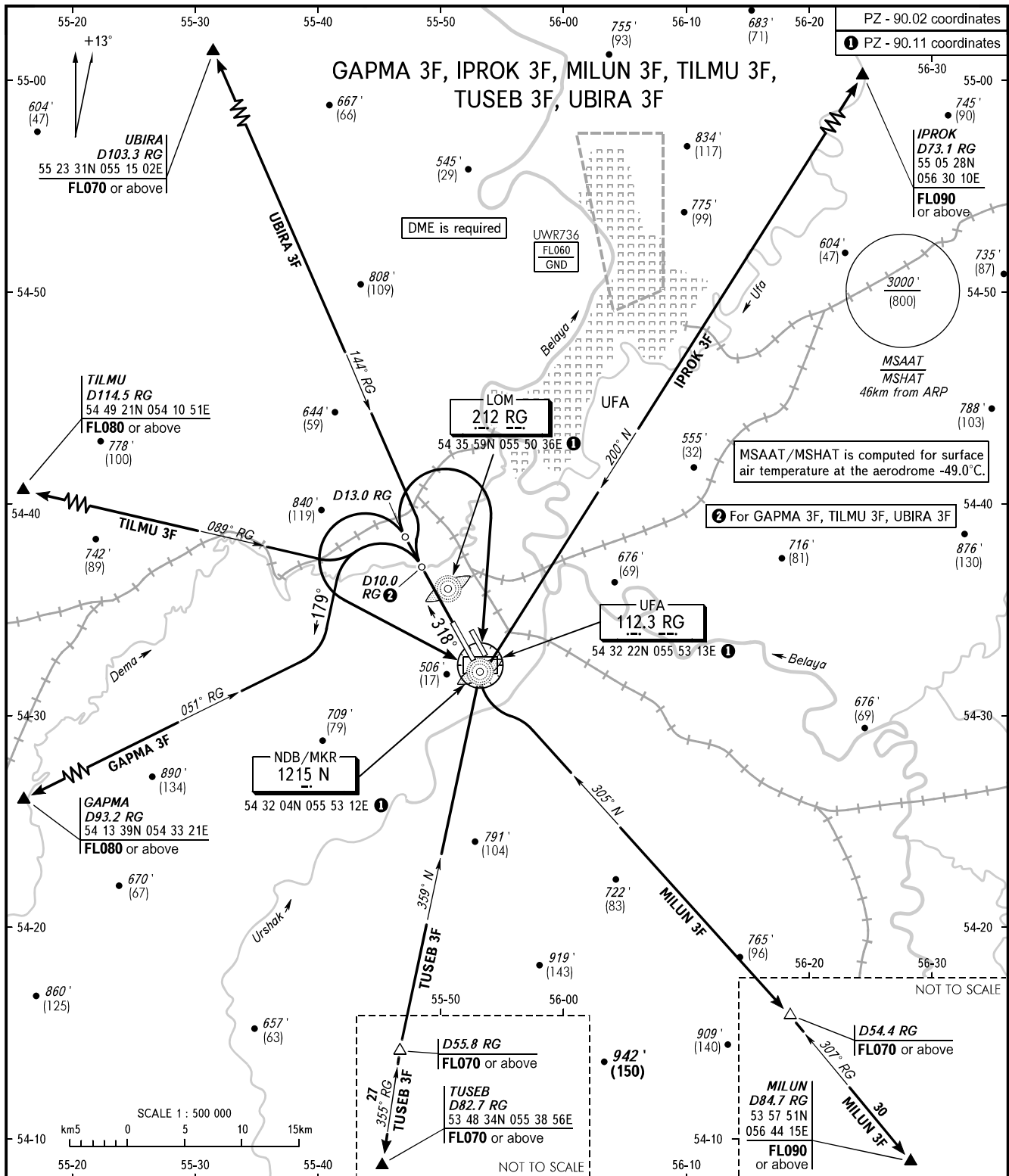
UFA, RUSSIA

UFA

RWY 32L

TRANSITION ALTITUDE : 5000'

TRANSITION HEIGHT : (1410)



RADAR 120.900  
APPROACH 126.000

- WARNING:**
1. Turn before DER is PROHIBITED.
  2. The minimum climb gradient is as follows (required due to the airspace structure):  
- 4.1% up to FL070 for IPROK 3F.
  3. Flying birds can be expected in take-off, landing areas and on final approach segment.

BEARINGS AND TRACKS ARE MAGNETIC  
ALTITUDES IN FEET  
ELEVATIONS IN FEET AND METRES  
HEIGHTS IN METRES  
DISTANCES IN KILOMETRES

Alt set: - QNH (QFE on req);  
- hPa (mm on req).