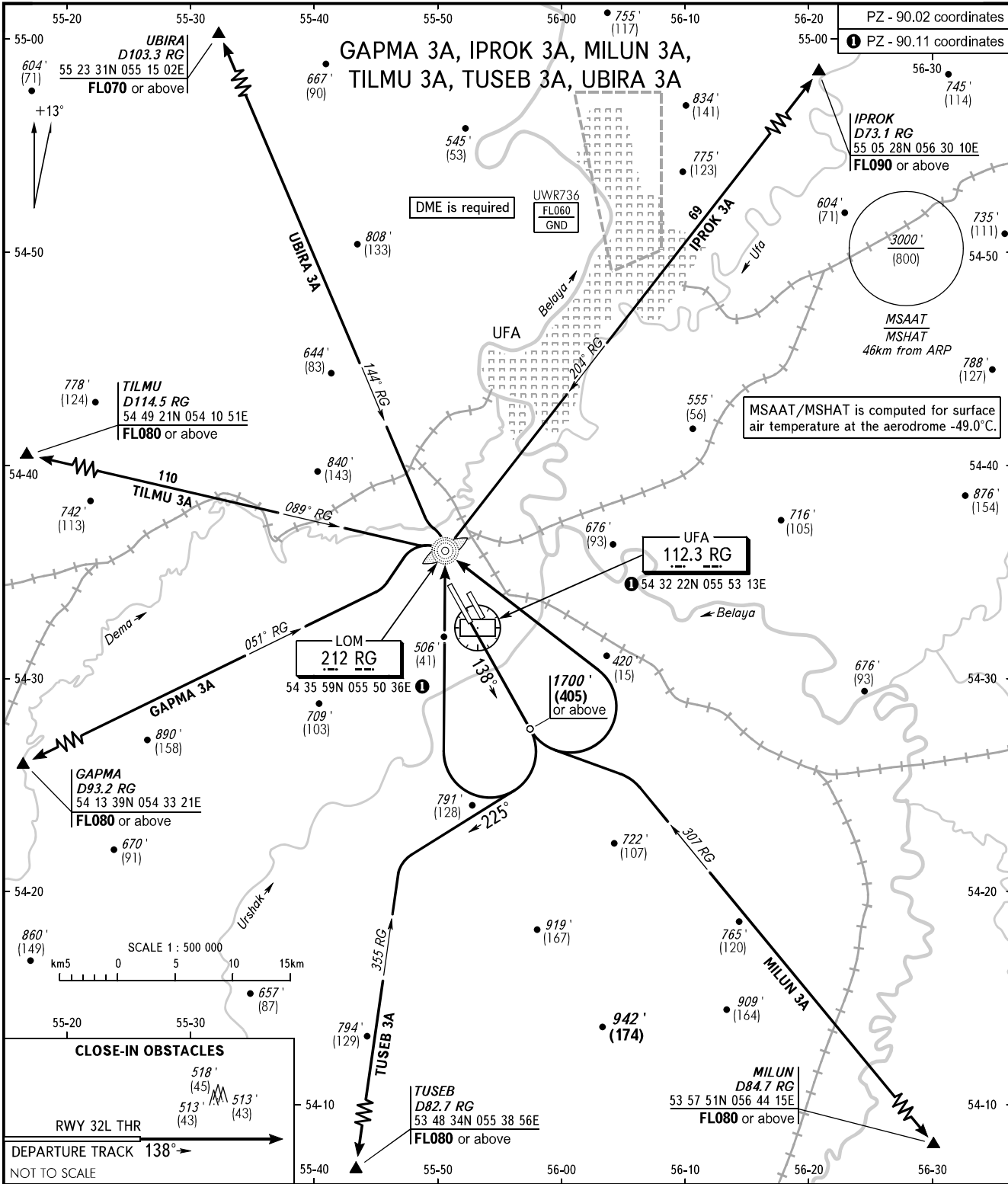


STANDARD DEPARTURE CHART
INSTRUMENT (SID) - ICAO

TRANSITION ALTITUDE : 5000'
TRANSITION HEIGHT : (1410)

UFA, RUSSIA
UFA
RWY 14R



RADAR	120.900	WARNING: 1. Turn before DER is PROHIBITED. 2. Flying birds can be expected in take-off, landing areas and on final approach segment. 3. The minimum climb gradient due to the airspace structure: - 4.7% up to FL070 for IPROK 3A.
APPROACH	126.000	
BEARINGS AND TRACKS ARE MAGNETIC ALTITUDES IN FEET ELEVATIONS IN FEET AND METRES HEIGHTS IN METRES DISTANCES IN KILOMETRES		Alt set: - QNH (QFE on req); - hPa (mm on req).
CHANGE: UWR736		