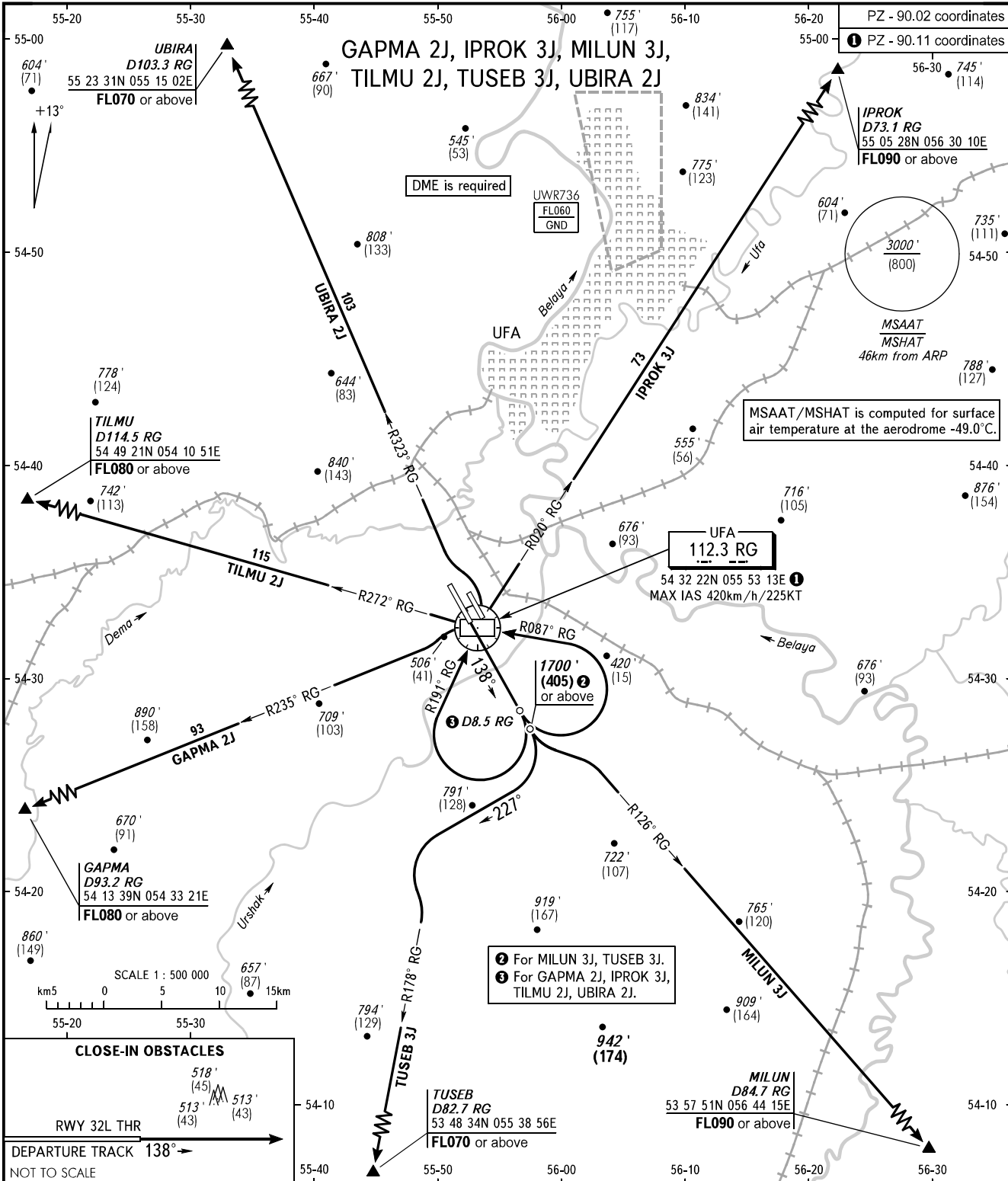


STANDARD DEPARTURE CHART
INSTRUMENT (SID) - ICAO

TRANSITION ALTITUDE : 5000'
TRANSITION HEIGHT : (1410)

UFA, RUSSIA
UFA
RWY 14R



PZ - 90.02 coordinates
① PZ - 90.11 coordinates

IPROK
D73.1 RG
55 05 28N 056 30 10E
FL090 or above

MSAAT
MSHAT
46km from ARP
788' (127)

MSAAT/MSHAT is computed for surface air temperature at the aerodrome -49.0°C.

UFA
112.3 RG
54 32 22N 055 53 13E
MAX IAS 420km/h/225KT

② For MILUN 3J, TUSEB 3J.
③ For GAPMA 2J, IPROK 3J, TILMU 2J, UBIRA 2J.

| CLOSE-IN OBSTACLES | |
|--------------------|------------|
| 518' (155) | 513' (155) |
| 513' (155) | 513' (155) |

RWY 32L THR
DEPARTURE TRACK 138°
NOT TO SCALE

| | |
|----------------|---------|
| RADAR APPROACH | 120.900 |
| | 126.000 |

- WARNING:**
1. Turn before DER is PROHIBITED.
 2. Flying birds can be expected in take-off, landing areas and on final approach segment.
 3. The minimum climb gradient due to the airspace structure: - 3.7% up to FL070 for IPROK 3J.

BEARINGS AND TRACKS ARE MAGNETIC
ALTITUDES IN FEET
ELEVATIONS IN FEET AND METRES
HEIGHTS IN METRES
DISTANCES IN KILOMETRES

Alt set: - QNH (QFE on req);
- hPa (mm on req).

CHANGE: UWR736